

## **Appendix B**

### **WIN Attachment - Park Details and Maps**

**Revised May 20, 2022**

# Appendix B

## Watoga State Park

### Priority #1

Appendix B – Watoga State Park – Priority #1

		Bandwidth Needs	Potential delivery method
<b>Priority</b>	<b>1</b>		
<b>County</b>	Pocahontas		
<b>Park Name</b>	<b>Watoga State Park</b>		
<b>City</b>	Marlinton		
<b>SqMi</b>	15.90 SqMi		
<b>Acres</b>	10,162.00 Acres		
<b>Roads</b>			
	Highway 27/3		
	Park and Forest Route 819		
<b>Facilities</b>			
- Headquarters and parking lot	38.11642 -80.12786	100/100	Wireline, aerial available
- Maintenance Facility	38.062027 -80.053994	100/100	Wireline, aerial available
- Supply Building	38.052306 -80.065454	100/100	Wireline, aerial available
- Superintendent House	38.052826 -80.065874	100/100	Wireline, aerial available
- Assistant Superintendent House	38.061789 -80.053915	100/100	Wireline, aerial available
- Recreation Building	38.070106 -80.070387	100/100	Wireline, aerial available
- Swimming Pool	38.070088 -80.071101	100/100	Wireline/wireless, aerial available
- Tennis & Basketball Courts	38.065902 -80.070312	100/100	Wireline/wireless, aerial available
- Ann Bailey Lookout Tower	38.063040 -80.100319		
-Picnic Area/Barn		100/100	Wireline/wireless, aerial available
- Cabins	34 Cabins	100/100	Wireline/wireless, aerial available
Cabins 1 & 2	38.070322 -80.102561	100/100	Wireline/wireless, aerial available
Cabins 3 & 4	38.072267 -80.090495	100/100	Wireline/wireless, aerial available
Cabins 5 & 6	38.071667 -80.085556	100/100	Wireline/wireless, aerial available
C7	38.071402 -80.084562	100/100	Wireline/wireless, aerial available
C8	38.071760 -80.083575	100/100	Wireline/wireless, aerial available
C9	38.071930 -80.083401	100/100	Wireline/wireless, aerial available
C10	38.072204 -80.083290	100/100	Wireline/wireless, aerial available

Appendix B – Watoga State Park – Priority #1

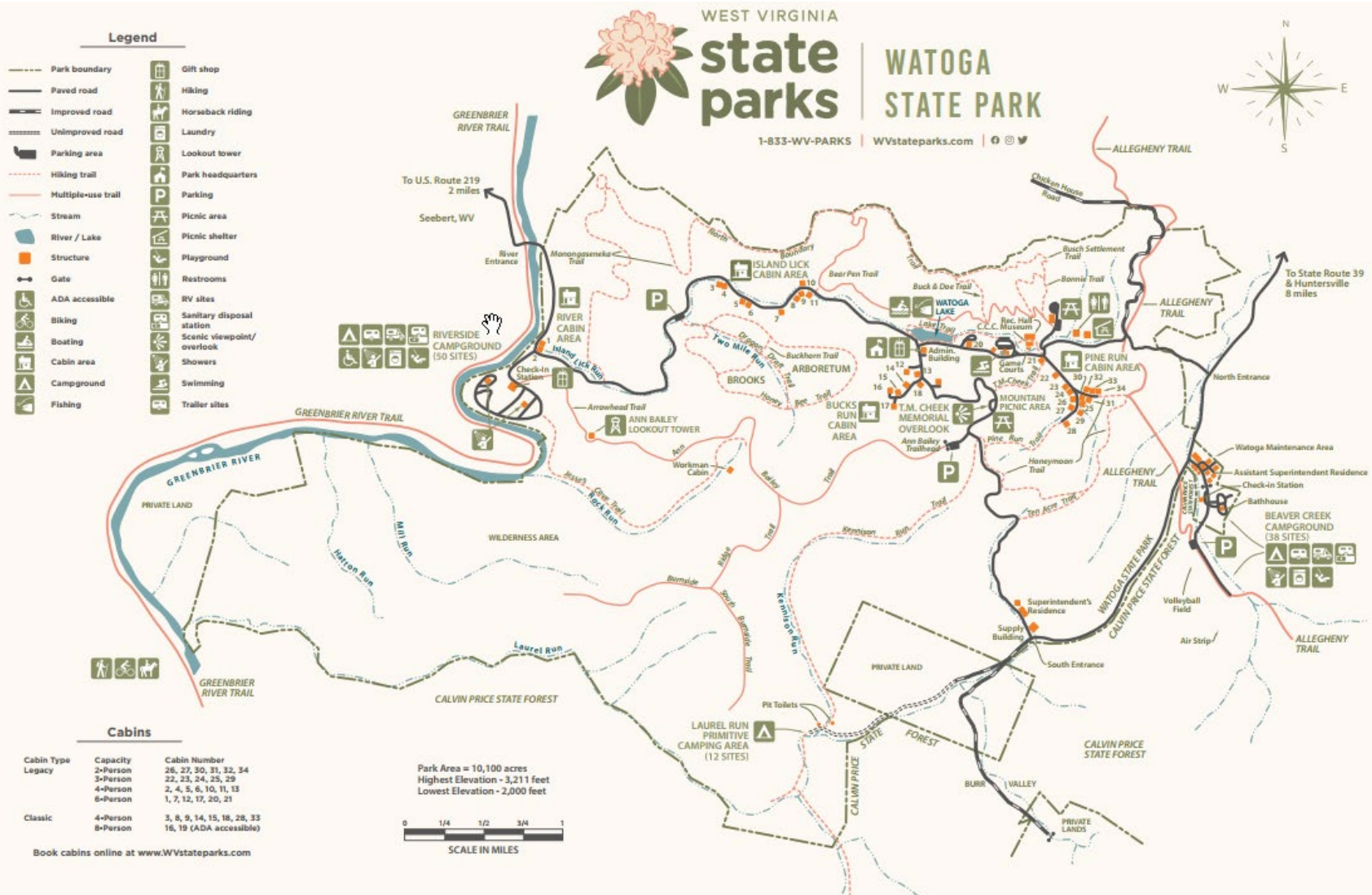
<b>C11</b>	38.072052 -80.082822	100/100	Wireline/wireless, aerial available
<b>C12</b>	38.065294 -80.074164	100/100	Wireline/wireless, aerial available
<b>C13</b>	38.065066 -80.074049	100/100	Wireline/wireless, aerial available
<b>C14</b>	38.064947 -80.074232	100/100	Wireline/wireless, aerial available
<b>C15</b>	38.064687 -80.074518	100/100	Wireline/wireless, aerial available
<b>C16</b>	38.064423 -80.074902	100/100	Wireline/wireless, aerial available
<b>C17</b>	38.064426 -80.074627	100/100	Wireline/wireless, aerial available
<b>C18</b>	38.064847 -80.074001	100/100	Wireline/wireless, aerial available
<b>C19</b>	38.064657 -80.073406	100/100	Wireline/wireless, aerial available
<b>C20</b>	38.070162 -80.071586	100/100	Wireline/wireless, aerial available
<b>C21</b>		100/100	Wireline/wireless, aerial available
<b>C22</b>		100/100	Wireline/wireless, aerial available
<b>C23</b>		100/100	Wireline/wireless, aerial available
<b>C24</b>		100/100	Wireline/wireless, aerial available
<b>C25</b>		100/100	Wireline/wireless, aerial available
<b>C26</b>		100/100	Wireline/wireless, aerial available
<b>C27</b>		100/100	Wireline/wireless, aerial available
<b>C28</b>		100/100	Wireline/wireless, aerial available
<b>C29</b>		100/100	Wireline/wireless, aerial available
<b>C30</b>		100/100	Wireline/wireless, aerial available
<b>C31</b>		100/100	Wireline/wireless, aerial available
<b>C32</b>		100/100	Wireline/wireless, aerial available
<b>C33</b>		100/100	Wireline/wireless, aerial available
<b>C34</b>		100/100	Wireline/wireless, aerial available
<b>- Campgrounds</b>	2 campgrounds		
<b>Beaver Creek</b>	38 slots	100/100	Wireline/wireless
<b>Coordinates</b>	38.060540 -80.053715		
<b>Electrical Service</b>	Electrical service in 28 slots		Underground
<b>Shower Facilities</b>		100/100	
<b>Check-in Station</b>		100/100	Wireline/wireless, aerial available

Appendix B – Watoga State Park – Priority #1

<b>Riverside</b>	50 slots	100/100	Wireline/wireless
<b>Electrical Service</b>	Electrical Service in 50 slots		Underground
<b>Coordinates</b>	38.065389 -80.103898		
<b>Shower Facilities</b>	38.063755 -80.103625	100/100	
<b>Check-in Station</b>	38.064101 -80.104055	100/100	Wireline/wireless
<b>Trails</b>			
<b>Arrowhead</b>	1.00 Miles		
<b>Bearpen</b>	3.00 Miles		
<b>Brook Memorial Arboretum</b>	4.50 Miles		
<b>Buck and Doe</b>	.75 Miles		
<b>Burnside Ridge</b>	3.00 Miles		
<b>Honeymoon</b>	2.00 Miles		
<b>Jesse's Cove</b>	2.50 Miles		
<b>Kennison Run</b>	3.50 Miles		
<b>Lake</b>	1.50 Miles		
<b>Monongaseneka</b>	2.50 Miles		
<b>North Boundary</b>	2.00 Miles		
<b>Pine Run</b>	.75 Miles		
<b>T.M. Cheek</b>	.50 Miles		
<b>Ten Acre</b>	.50 Miles		
<b>South Burnside</b>	1.00 Miles		

*Watoga State Park Details*

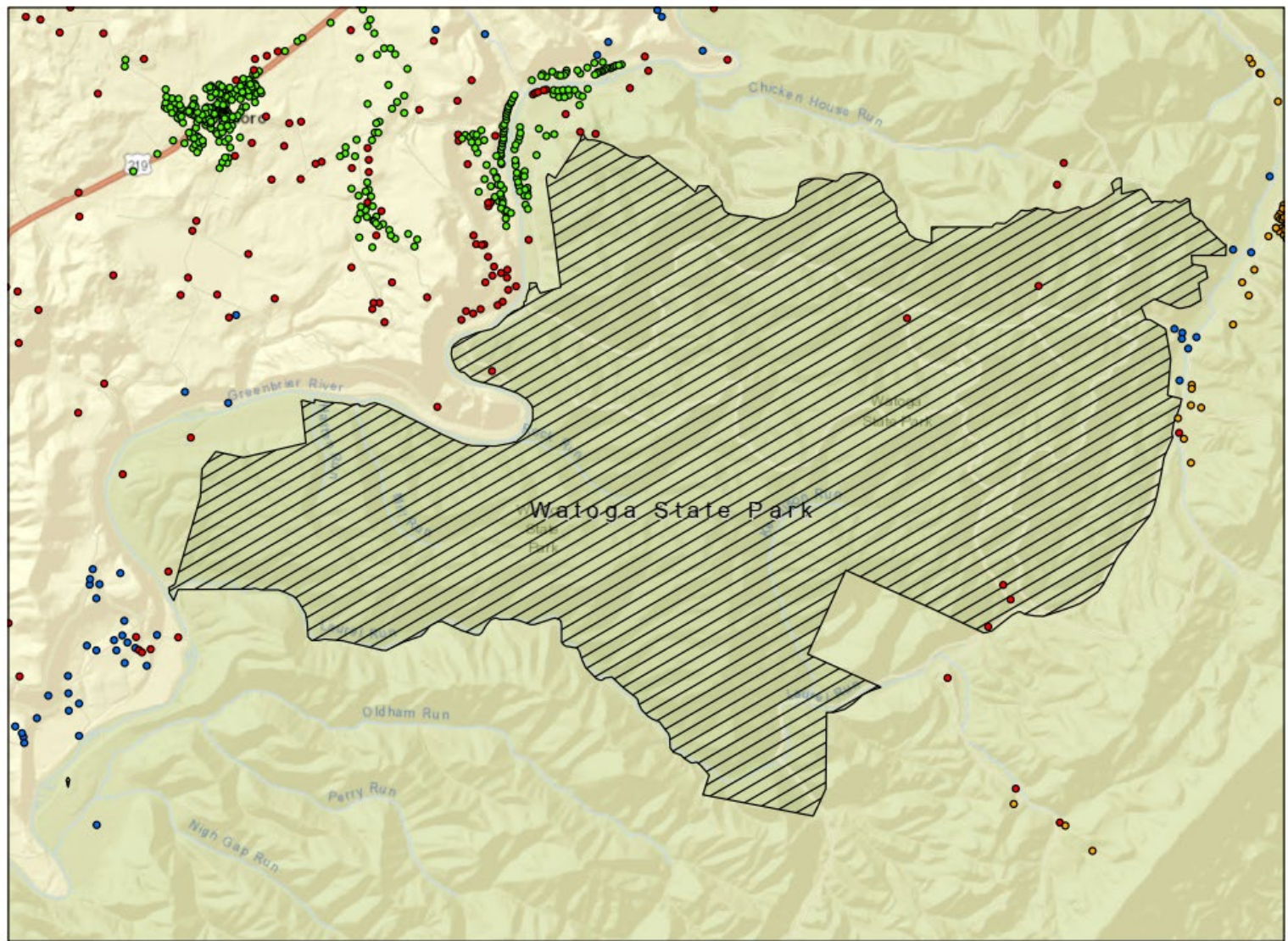
## Appendix B – Watoga State Park – Priority #1



Watoga State Park Map



Appendix B – Watoga State Park – Priority #1



Watoga State Park  
Address Classifications

● Targeted    ● Other    ● Funded, RDOF - CityNet    ● Funded, RDOF - Frontier

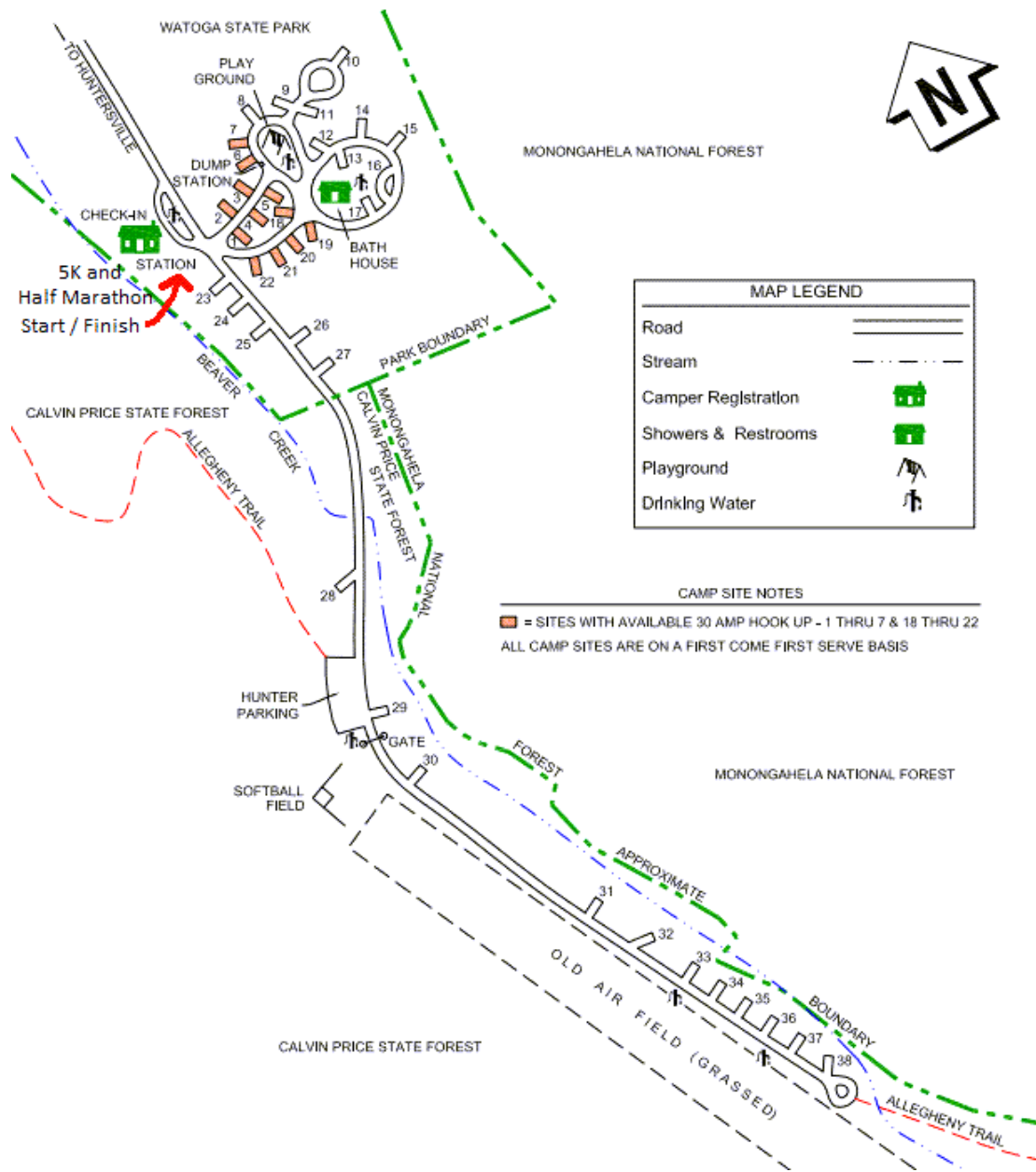
*Watoga State Park Address Classification Map*



*Watoga State Park - Riverside Campgrounds Map*



## Appendix B – Watoga State Park – Priority #1



*Watoga State Park – Beaver Creek Campgrounds Map*

# Appendix B

## Beech Fork State Park

### Priority #2

Appendix B – Beech Fork State Park – Priority #2

		Bandwidth Needs	Potential delivery method
<b>Priority</b>	<b>2</b>		
<b>County</b>	Cabell		
<b>Park Name</b>	<b>Beech Fork State Park</b>		
<b>City</b>	Barboursville		
<b>SqMi</b>			
<b>Acres</b>	3,144.00 Acres		
<b>Roads</b>			
	Highway 43		
<b>Facilities</b>			
- Access Control Station	38.183091 -82.204552	100/100	Wireline/Wireless
- Headquarters	38182908 -82.204728	1G/1G	Wireline/Wireless
- Maintenance Facility	38.184006 -82.210153	100/100	Mixture of aerial and underground
- Superintendent House	38.184308 -82.201431	100/100	Mixture of aerial and underground
- Assistant Superintendent House	38.183394 -82.210523	100/100	Mixture of aerial and underground
- Swimming Pool	38.182327 -82.203871	100/100	Wireline/Wireless, aerial available
- Tennis & Basketball Courts	38.182005 -82.202743		
- Ball Park	38.182253 -82.202052		
- Cabins			
C1	38.184801 -82.211079	100/100	Mixture of aerial and underground
C2	38.184692 -82.211158	100/100	Mixture of aerial and underground
C3	38.184579 -82.211193	100/100	Mixture of aerial and underground
C4	38.184471 -82.211250	100/100	Mixture of aerial and underground
C5	38.184298 -82.211526	100/100	Mixture of aerial and underground
C6	38.184147 -82.211467	100/100	Wireline/Wireless, limited aerial available
- Campgrounds			Lake will flood campgrounds
Old Orchard	49 slots	100/100 ea	Wireless
Coordinates	38.182605 -82.205593		

Appendix B – Beech Fork State Park – Priority #2

<b>Electrical Service</b>	Electrical service in 49 slots		Underground
<b>Shower Facilities</b>	38.182737 -82.205549		
<b>Moxley Branch</b>	86 slots	100/100 ea	Wireless
<b>Electrical Service</b>	Electrical service in 86 slots		Underground
<b>Coordinates</b>	38.182084 -82.210461		
<b>Toilet Facilities</b>	38.181780 -82.210000		
<b>Shower Facilities</b>	38.182211 -82.210742		
<b>Four Coves</b>	88 Slots	100/100 ea	Mixture of aerial and underground
<b>Electrical Service</b>	Electrical service in 88 slots		Underground
<b>Coordinates</b>	38.182979 -82.212652		
<b>Toilet Facilities</b>	38.182739 -82.212023		
<b>Shower Facilities</b>	38.183175 -82.213184		
<b>Lakeview</b>	51 slots	100/100 ea	Mixture of aerial and underground
<b>Electrical Service</b>	Electrical service in 51 slots		Underground
<b>Coordinates</b>	38.184212 -82.211845		
<b>Toilet Facilities #1</b>	38.183965 -82.213048		
<b>Toilet Facilities #2</b>	38.184831 -82.211623		
<b>Shower Facilities</b>	38.184134 -82.211868		
<b>Boat Rental Station/Boat Launch</b>		100/100	Mixture of aerial and underground
<b>Trails</b>			
<b>Coal Mine</b>	.60 Miles		
<b>Long Branch</b>	.50 Miles		
<b>Lost</b>	3.50 Miles		
<b>Mary Davis</b>	5.00 Miles		
<b>Nature</b>	.80 Miles		
<b>North Ridge</b>	.75 Miles		
<b>Overlook</b>	2.00 Miles		
<b>Physical Fitness</b>	1.00 Miles		

*Beech Fork State Park Details*

**WEST VIRGINIA**

# state parks

BEECH FORK STATE PARK

1-833-WV-PARKS | WVstateparks.com | Facebook Twitter Instagram

**Legend**

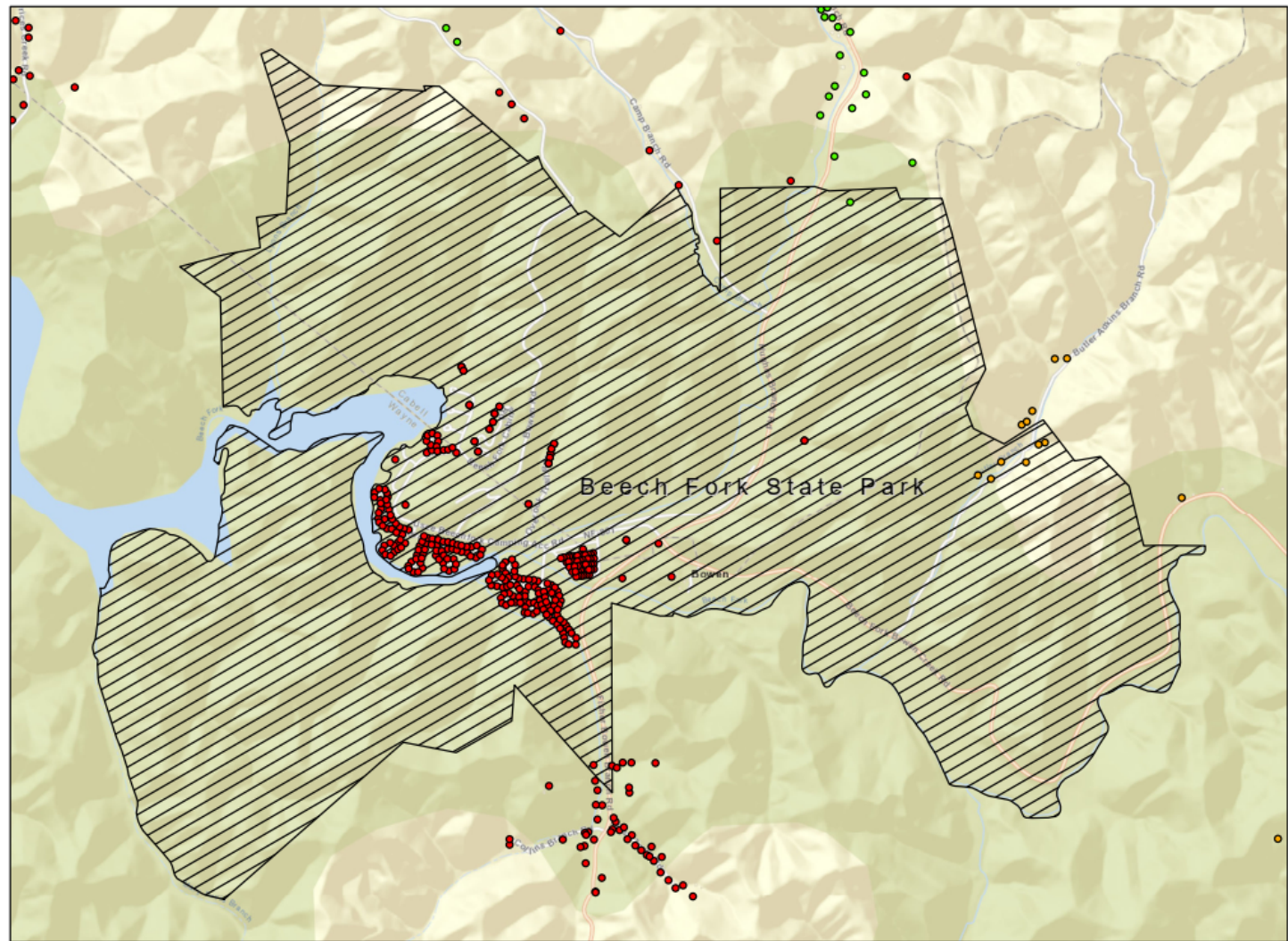
- Paved road
- Hiking trail
- Multi-use trail
- Stream
- River/pond
- Parking area
- Structures
- Fence
- Water fountain
- Accessible
- Boat launch
- Cabin area
- Campfire
- Disc golf
- Fishing pier (accessible)
- Group camp
- Laundry
- Park headquarters
- Picnic area
- Picnic shelter (numbered)
- Playground
- Restrooms
- RV Sites
- Sanitary disposal station
- Scenic viewpoint/overlook
- Showers
- Store
- Swimming
- Tent sites
- Trailer sites

The map shows the following features:

- Lakeview Camping Area:** 225-275 Reservation sites, 225-275 Electric Only Sites, 262 and 264 are ADA Equipped.
- Cabin Area:** Cabin structures.
- Four Coves Camping Area:** 137-224 Reservation sites, 137-224 Electric Only Sites.
- Moxley Branch Camping Area:** 50-136 Reservation Sites, 50-97 Electric Only Sites, 98-136 Electric and Water Sites.
- Old Orchard Camping Area:** 1-49 Reservation Sites, 1-49 Full Hook-Up Sites (Water, Sewer and Electric), Sites 6 and 29 are ADA Equipped.
- Other Features:** Boat Docks, Boat Launch, Disc Golf, Fishing Pier, Group Camp, Laundry, Picnic Area, Picnic Shelter, Playground, Restrooms, RV Sites, Sanitary Disposal Station, Scenic Viewpoint/Overlook, Showers, Store, Swimming, Tent Sites, Trailer Sites, Trailhead Parking, To Wayne, To Huntington, To Mingo Junction, To New River Gorge National Park & Natural Monument, To Putnam County, To Raleigh County, To Lincoln County, To Boone County, To Logan County, To Cabell County, To Boone County, To Lincoln County, To Putnam County, To Raleigh County, To New River Gorge National Park & Natural Monument, To Mingo Junction, To Huntington.

12 | Page





Beech Fork State Park  
Address Classifications

• Targeted • Other • Funded, RDOF - Frontier

*Beech Fork State Park - Address Classifications Map*

# Appendix B

## Blackwater Falls State Park

### Priority #3

Appendix B – Blackwater Falls State Park – Priority #3

		Bandwidth Needs	Potential delivery method
Priority	3		
County	Tucker		
Park Name	Blackwater Falls North Side		
City	Davis		
SqMi			
Acres	446.00 Acres		
Roads			
	Highway 29		
	Highway 29/1		
Facilities			
- Headquarters	39.072026 -79.285493		HQ is in the lodge
- Maintenance Facility	39.064853 -79.284226	100/100	Wireline/Wireless, Aerial and UG
- Superintendent House	39.070023 -79.285707	100/100	Wireline/Wireless, Aerial and UG
- Assistant Superintendent House	39.070727 -79.291000	100/100	Wireline/Wireless, aerial available
- Lodge	39.062923 -79.295201	200/200	Fiber present, bandwidth present
- Supply Building	39.062364 -79.294822	100/100	Wireline/Wireless, aerial available
- Sled Run		100/100	Fiber present, bandwidth present
- Tennis & Basketball Courts	39.070249 -79.294234		
- Nature Center	39.065925 -79.294360	100/100	Wireline/Wireless, underground only
Trading Company and parking area		100/100	Wireline/Wireless, underground only
- Cabins			
Southside			
C1	39.061688 -79.302824	100/100	Wireline/Wireless, Aerial - fiber presence
C2	39.061649 -79.302625	100/100	Wireline/Wireless, Aerial - fiber presence
C3	39.061912 -79.302532	100/100	Wireline/Wireless, Aerial - fiber presence
C4	39.061794 -79.302164	100/100	Wireline/Wireless, Aerial - fiber presence
C5	39.061482 -79.302033	100/100	Wireline/Wireless, Aerial - fiber presence

Appendix B – Blackwater Falls State Park – Priority #3

<b>C6</b>	39.061390 -79.302346	100/100	Wireline/Wireless, Aerial - fiber presence
<b>C7</b>	39.061114 -79.302320	100/100	Wireline/Wireless, Aerial - fiber presence
<b>C8</b>	39.060823 -79.302069	100/100	Wireline/Wireless, Aerial - fiber presence
<b>C9</b>	39.060976 -79.301699	100/100	Wireline/Wireless, Aerial - fiber presence
<b>C10</b>	39.060689 -79.301892	100/100	Wireline/Wireless, Aerial - fiber presence
<b>C11</b>	39.060779 -79.301450	100/100	Wireline/Wireless, Aerial - fiber presence
<b>C12</b>	39.060528 -79.301325	100/100	Wireline/Wireless, Aerial - fiber presence
<b>C13</b>	39.060262 -79.301710	100/100	Wireline/Wireless, Aerial - fiber presence
<b>C14</b>	39.060486 -79.302009	100/100	Wireline/Wireless, Aerial - fiber presence
<b>C15</b>	39.060202 -79.301967	100/100	Wireline/Wireless, Aerial - fiber presence
<b>C16</b>	39.060230 -79.302203	100/100	Wireline/Wireless, Aerial - fiber presence
<b>C17</b>	39.060587 -79.302344	100/100	Wireline/Wireless, Aerial - fiber presence
<b>C18</b>	39.060271 -79.302456	100/100	Wireline/Wireless, Aerial - fiber presence
<b>C19</b>	39.060637 -79.302603	100/100	Wireline/Wireless, Aerial - fiber presence
<b>C20</b>	39.060343 -79.302768	100/100	Wireline/Wireless, Aerial - fiber presence
<b>C21</b>	39.060680 -79.302826	100/100	Wireline/Wireless, Aerial - fiber presence
<b>C22</b>	39.060436 -79.302994	100/100	Wireline/Wireless, Aerial - fiber presence
<b>C23</b>	39.060700 -79.303046	100/100	Wireline/Wireless, Aerial - fiber presence
<b>C24</b>	39.060700 -79.303199	100/100	Wireline/Wireless, Aerial - fiber presence
<b>C25</b>	39.060705 -79.303454	100/100	Wireline/Wireless, Aerial - fiber presence
<b>C26</b>	39.060659 -79.303638	100/100	Wireline/Wireless, Aerial - fiber presence
<b>Northside</b>			
<b>C27</b>	39.064174 -79.292259	100/100	Wireline/Wireless, underground only
<b>C28</b>	39.064222 -79.292359	100/100	Wireline/Wireless, underground only
<b>C29</b>	39.064225 -79.292477	100/100	Wireline/Wireless, underground only
<b>C30</b>	39.064173 -79.292574	100/100	Wireline/Wireless, underground only
<b>C31</b>	39.064090 -79.292619	100/100	Wireline/Wireless, underground only
<b>C32</b>	39.064160 -79.293153	100/100	Wireline/Wireless, underground only
<b>C33</b>	39.064254 -79.293206	100/100	Wireline/Wireless, underground only
<b>C34</b>	39.064296 -79.293322	100/100	Wireline/Wireless, underground only

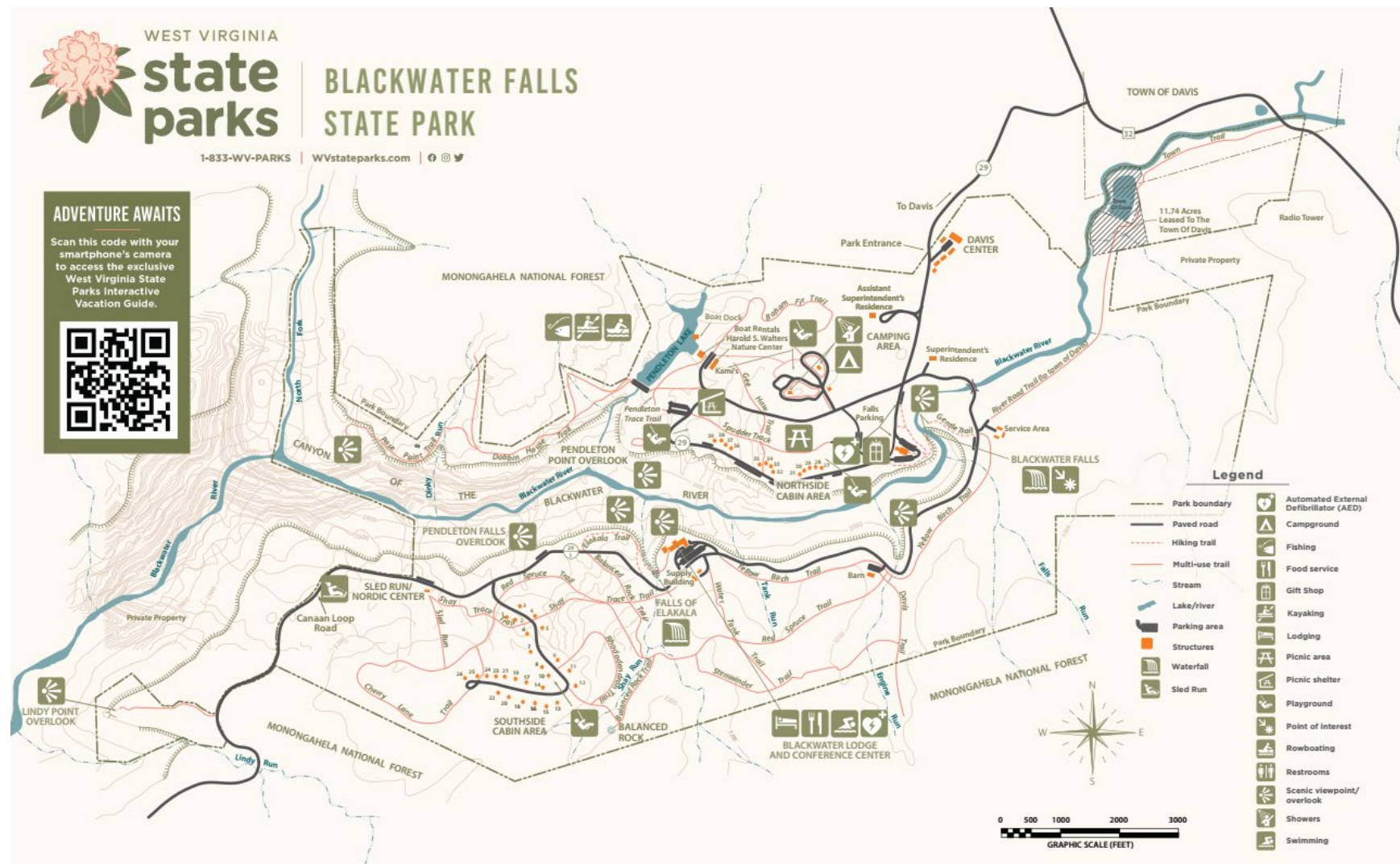
Appendix B – Blackwater Falls State Park – Priority #3

<b>C35</b>	39.064288 -79.293451	100/100	Wireline/Wireless, underground only
<b>C36</b>	39.064507 -79.294046	100/100	Wireline/Wireless, underground only
<b>C37</b>	39.064595 -79.294093	100/100	Wireline/Wireless, underground only
<b>C38</b>	39.064645 -79.294188	100/100	Wireline/Wireless, underground only
<b>C39</b>	39.064627 -79.294305	100/100	Wireline/Wireless, underground only
<b>Pendleton Point Shelter</b>		100/100	Wireline/Wireless, underground only
<b>- Campgrounds</b>			
<b>Blackwater Falls</b>	65 slots	100/100 ea.	Wireline/Wireless, underground only
<b>Coordinates</b>	39.065505 -79.292080	100/100	Wireline/Wireless, underground only
<b>Electrical Service</b>	Electrical service in 65 slots		Mixture of aerial and underground
<b>Shower 1</b>	39.065563 -79.292636	100/100	
<b>Shower 2</b>	39.065563 -79.292636	100/100	
<b>Check-in station</b>		100/100	Wireline/Wireless, underground only
<b>Trails</b>	N/A		

*Blackwater Falls State Park Details*

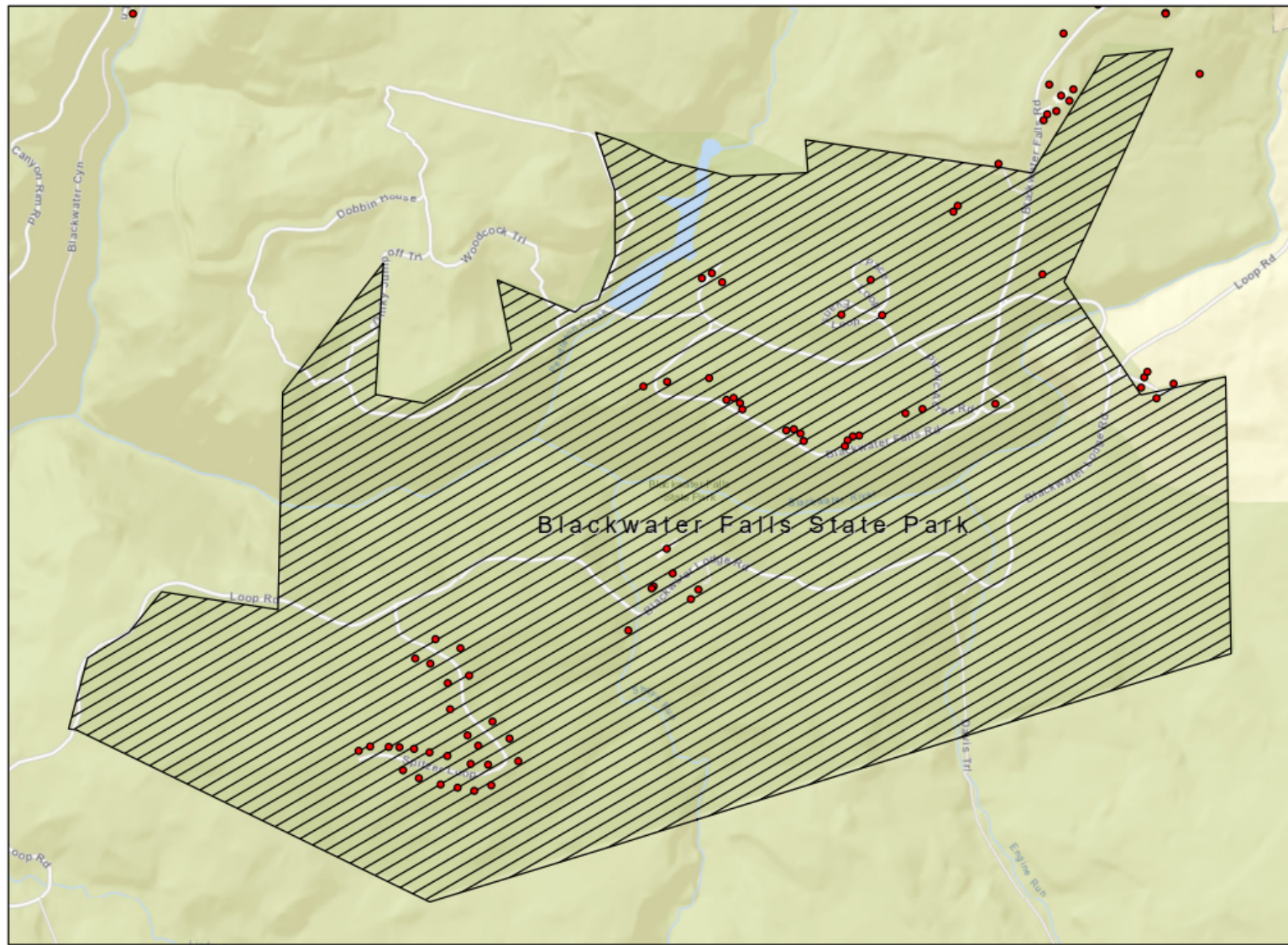


## Appendix B – Blackwater Falls State Park – Priority #3



Blackwater Falls State Park Map

Appendix B – Blackwater Falls State Park – Priority #3



Blackwater Falls State Park  
Address Classifications

● Targeted

*Blackwater Falls State Park Address Classifications Map*

# Appendix B

## Pipestem Resort State Park

### Priority #4

Appendix B – Pipestem Resort State Park – Priority #4

		Bandwidth Needs	Potential delivery method
<b>Priority</b>	<b>4</b>		
<b>County</b>	Summers		
<b>Park Name</b>	<b>Pipestem Resort</b>		
<b>City</b>	Pipestem		
<b>SqMi</b>	6.58 SqMi		
<b>Acres</b>	4,209.00 Acres		
<b>Roads</b>			
	Highway 18/2		
	Pipestem Drive		
<b>Facilities</b>			
- Headquarters	37.315737 -80.593747	1G/1G	Wireline/Wireless Starlink recently installed
- Maintenance Facility	37.311559 -80.591732	100/100	Wireline/Wireless
- Superintendent House	37.310873 -80.584136	100/100	Wireline/Wireless, aerial available
- Assistant Superintendent House	37.323801 -80.582325	100/100	Wireline/Wireless
- Lodge Coordinator Residence	37.323615 -80.582079	100/100	Wireline/Wireless
- Ranger Residence	37.312999 -80.584759	100/100	Wireline/Wireless
- McKeever Lodge	37.323096 -80.585813	1G/1G	Wireline/Wireless Fiber presence, needs upgraded.
- Golf Course 18 Club House	37.323718 -80.585179		Fiber present
-Golf Course Short Course clubhouse		100/100	Wireline/Wireless
- Golf Course Maintenance Facility	37.323238 -80.583593	100/100	Wireline/Wireless, aerial available
- Tennis & Basketball Courts	37.324038 -80.585641		
- Splash Park	37.322590 -80.585893	100/100	Wireline/Wireless
- Amphitheater	37.315244 -80.594475	100/100	Wireline/Wireless
- Disc & Miniature Golf & Skeet Course	37.314688 -80.594784	100/100	Wireline/Wireless
- Canyon Rim Center	37.320328 -80.595618		Fiber present, no requirements
<b>ZipLine/Aerial Tram</b>	Service from Canyon Rim Center		

Appendix B – Pipestem Resort State Park – Priority #4

- Mountain Creek Lodge	37.321629 -80.003208		Wireline, aerial available, Fiber present, needs upgraded.
- Nature Center	37.313113 -80.592281	100/100	Wireline/Wireless
- Horse Stables	37.311573 -80.590718	100/100	Wireline/Wireless
- Lookout Tower	37.305200 -80.582149		
- Cabins			
C1	37.321070 -80.591796	50/30 (existing)	Coaxial Underground, aerial available
C2	37.320969 -80.591622	50/30 (existing)	Coaxial Underground, aerial available
C3	37.320868 -80.591469	50/30 (existing)	Coaxial Underground, aerial available
C4	37.320885 -80.591277	50/30 (existing)	Coaxial Underground, aerial available
C5	37.320966 -80.591114	50/30 (existing)	Coaxial Underground, aerial available
C6	37.321023 -80.591288	50/30 (existing)	Coaxial Underground, aerial available
C7	37.321156 -80.591497	50/30 (existing)	Coaxial Underground, aerial available
C8	37.321227 -80.591691	50/30 (existing)	Coaxial Underground, aerial available
C9	37.321269 -80.591848	50/30 (existing)	Coaxial Underground, aerial available
C10	37.321950 -80.591332	50/30 (existing)	Coaxial Underground, aerial available
C11	37.321856 -80.591169	50/30 (existing)	Coaxial Underground, aerial available
C12	37.321880 -80.591038	50/30 (existing)	Coaxial Underground, aerial available
C13	37.322051 -80.591102	50/30 (existing)	Coaxial Underground, aerial available
C14	37.322122 -80.585354	50/30 (existing)	Coaxial Underground, aerial available
C15	37.322037 -80.585404	50/30 (existing)	Coaxial Underground, aerial available
C16	37.321944 -80.585337	50/30 (existing)	Coaxial Underground, aerial available
C17	37.321963 -80.585137	50/30 (existing)	Coaxial Underground, aerial available
C18	37.322096 -80.584995	50/30 (existing)	Coaxial Underground, aerial available
C19	37.322172 -80.584809	50/30 (existing)	Coaxial Underground, aerial available
C20	37.322202 -80.584608	50/30 (existing)	Coaxial Underground, aerial available
C21	37.322250 -80.584401	50/30 (existing)	Coaxial Underground, aerial available
C22	37.322335 -80.584214	50/30 (existing)	Coaxial Underground, aerial available
C23	37.322492 -80.584261	50/30 (existing)	Coaxial Underground, aerial available
C24	37.322604 -80.584417	50/30 (existing)	Coaxial Underground, aerial available

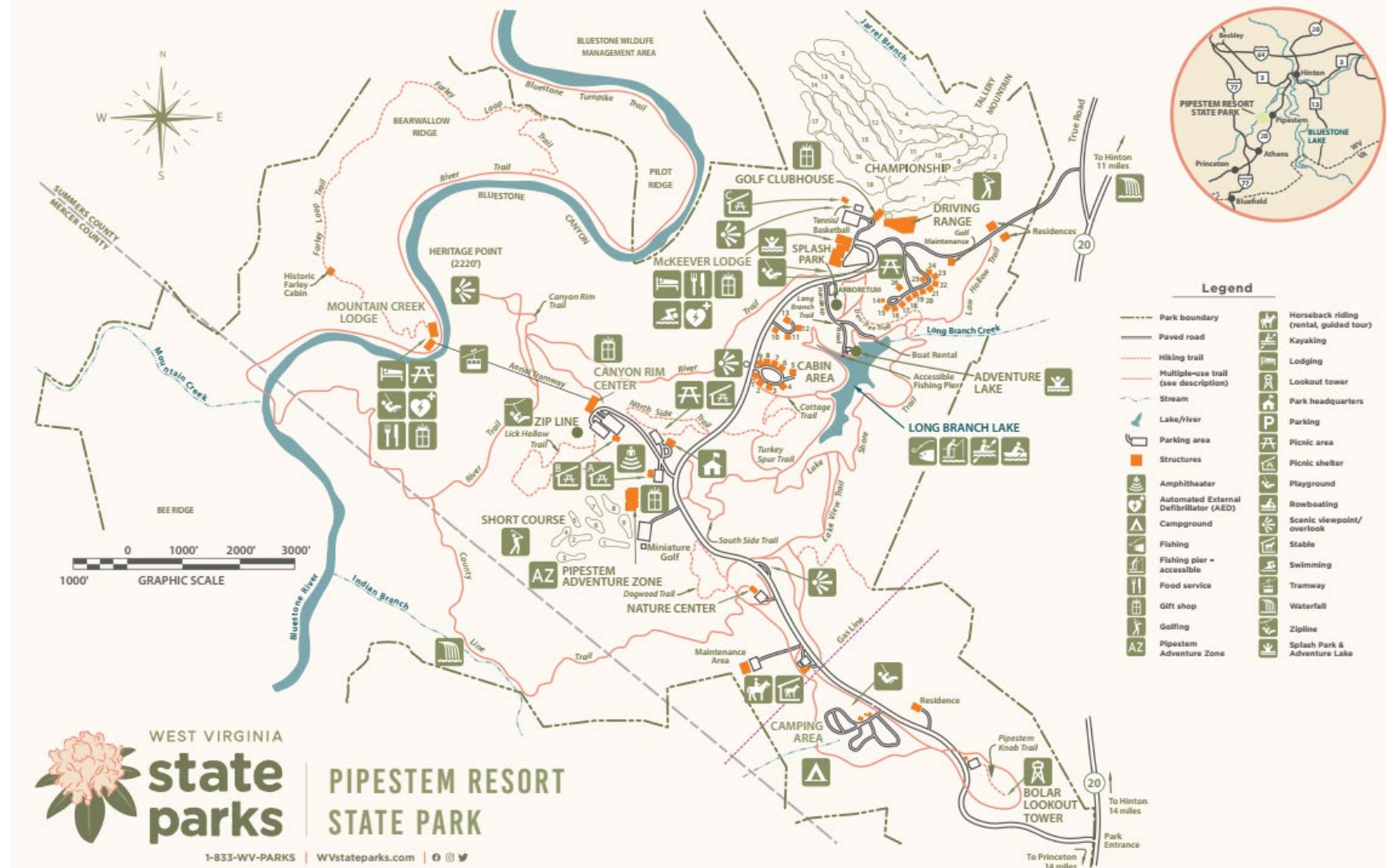


Appendix B – Pipestem Resort State Park – Priority #4

<b>C25</b>	37.322393 -80.584451	50/30 (existing)	Coaxial Underground, aerial available
<b>C26</b>	37.322315 -80.584936	50/30 (existing)	Coaxial Underground, aerial available
<b>- Campgrounds</b>	<b>82 slots</b>	<b>100/100 ea</b>	<b>Wireless</b>
<b>Coordinates</b>	37.310681 -80.585605		
<b>Electrical Service</b>	Electrical service in 82 slots		Underground
<b>Campground Check-in Station/store</b>	37.310910 -80.585392	100/100	Wireless
<b>Shower/Toilet facilities</b>	37.310810 -80.585533		
<b>Trails</b>			
Lake Shore	2.20 Miles		
Bluestone Turnpike	8.50 Miles		
Canyon Rim	.70 Miles		
Cottage	.70 Miles		
County Line	1.90 Miles		
Dogwood	.60 Miles		
Farley Loop	3.00 Miles		
Lake View	.40 Miles		
Law Hollow	.50 Miles		
Lick Hollow	1.60 Miles		
Long Branch	.30 Miles		
North Side	.30 Miles		
Turkey Spur	1.00 Miles		
River	5.25 Miles		
South Side	.60 Miles		

*Pipestem Resort State Park Details*

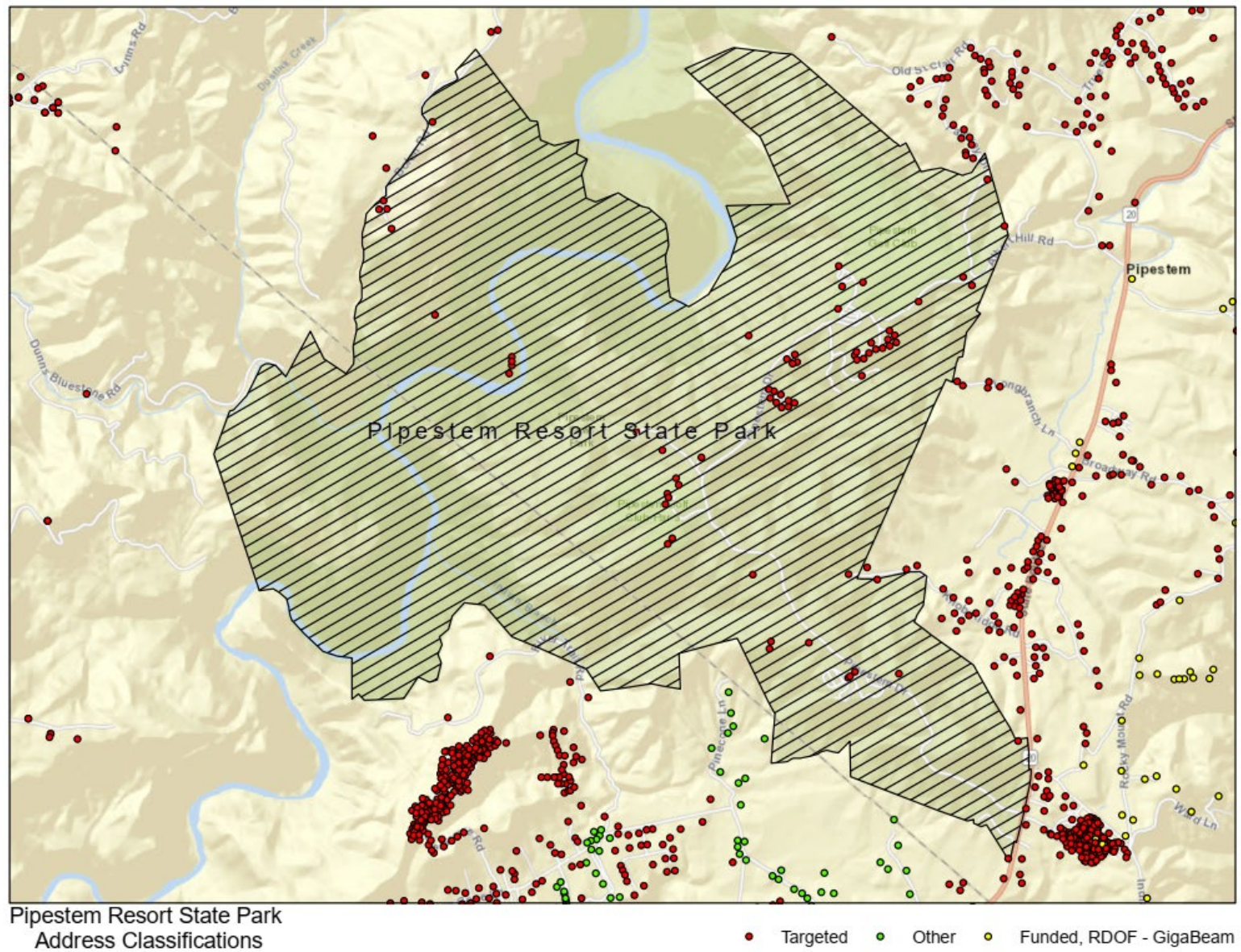
## Appendix B – Pipestem Resort State Park – Priority #4



Pipestem Resort State Park Map



## Appendix B – Pipestem Resort State Park – Priority #4



### Pipestem Resort State Park Address Classifications

# Appendix B

## Bluestone State Park

### Priority #5

Appendix B – Bluestone State Park – Priority #5

		Bandwidth Needs	Potential delivery method
<b>Priority</b>	<b>5</b>		
<b>County</b>	Summers		
<b>Park Name</b>	<b>Bluestone State Park</b>		
<b>City</b>	Hinton		
<b>SqMi</b>	4.52 SqMi		
<b>Acres</b>	2,890.00 Acres		
<b>Roads</b>			
	Highway 20/2		
<b>Facilities</b>			
- Headquarters	37.365995 -80.555946	1G/1G	Wireline/Wireless, aerial available
- Maintenance Facility	37.365784 -80.561707	100/100	Wireline/Wireless, aerial available
- Superintendent House	37.365988 -80.564749	100/100	Wireline/Wireless, aerial available
- Assistant Superintendent House	37.371551 -80.562033	100/100	Wireline/Wireless, aerial available
- Activities Building	37.371212 -80.562319	100/100	Wireline/Wireless, aerial available
- Boat Launch	37.365485 -80.555218		
- Marina	37.363202 -80.550149	100/100	Wireline/Wireless, aerial available
- Cabins			
C1	37.365815 -80.561040	100/100	Wireline/Wireless, aerial available
C2	37.365976 -80.560807	100/100	Wireline/Wireless, aerial available
C3	37.370081 -80.560927	100/100	Wireline/Wireless, aerial available
C4	37.370225 -80.561046	100/100	Wireline/Wireless, aerial available
C5	37.370394 -80.561113	100/100	Wireline/Wireless, aerial available
C6	37.370367 -80.560369	100/100	Wireline/Wireless, aerial available
C7	37.370518 -80.560534	100/100	Wireline/Wireless, aerial available
C8	37.370632 -80.560697	100/100	Wireline/Wireless, aerial available
C9	37.370728 -80.560878	100/100	Wireline/Wireless, aerial available
C10	37.370789 -80.561090	100/100	Wireline/Wireless, aerial available
C11	37.370952 -80.561839	100/100	Wireline/Wireless, aerial available



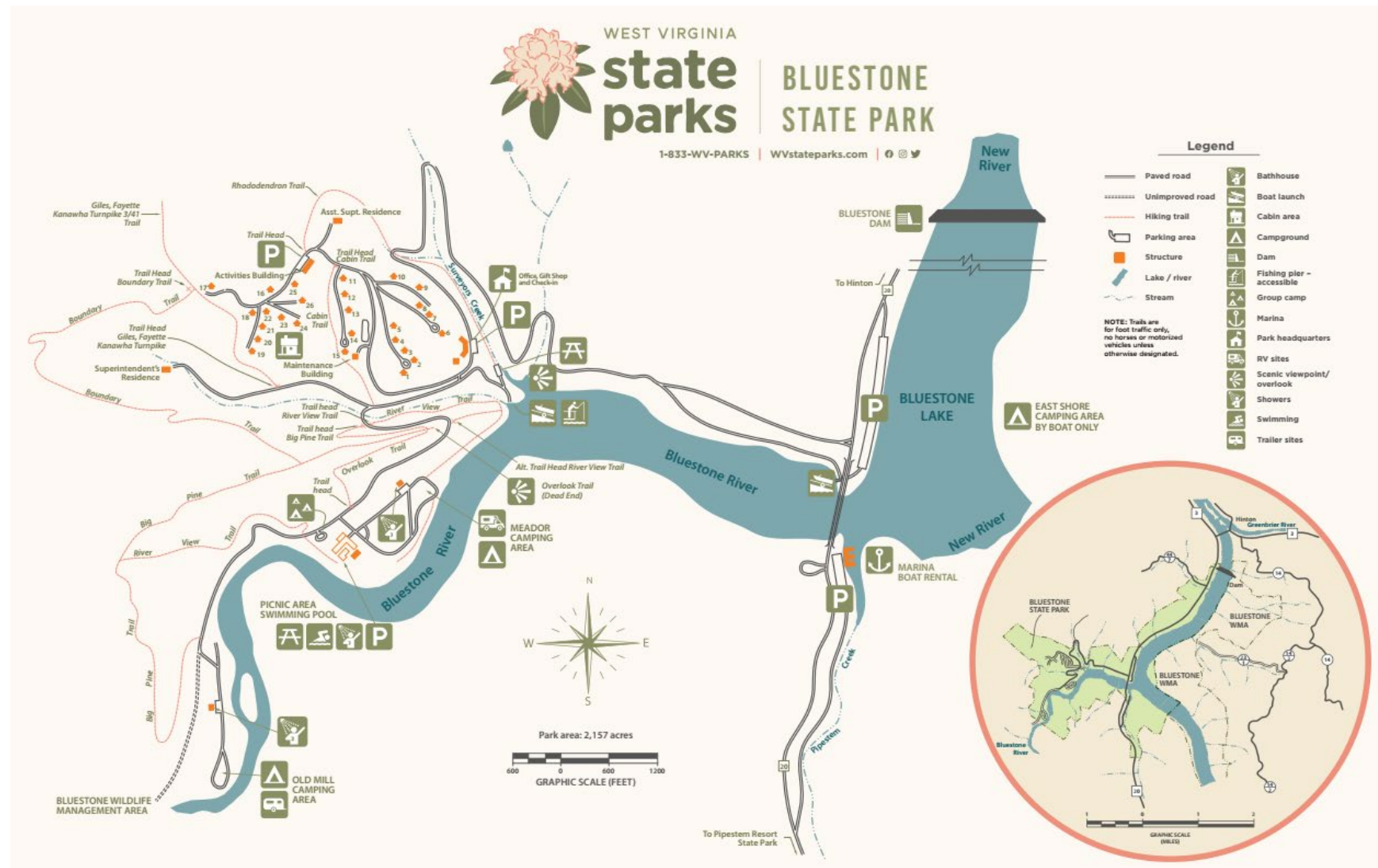
Appendix B – Bluestone State Park – Priority #5

<b>C12</b>	37.370771 -80.561858	100/100	Wireline/Wireless, aerial available
<b>C13</b>	37.370606 -80.561825	100/100	Wireline/Wireless, aerial available
<b>C14</b>	37.370363 -80.561812	100/100	Wireline/Wireless, aerial available
<b>C15</b>	37.370204 -80.561818	100/100	Wireline/Wireless, aerial available
<b>C16</b>	37.370822 -80.562921	100/100	Wireline/Wireless, aerial available
<b>C17</b>	37.370717 -80.563338	100/100	Wireline/Wireless, aerial available
<b>C18</b>	37.370540 -80.563219	100/100	Wireline/Wireless, aerial available
<b>C19</b>	37.370110 -80.563267	100/100	Wireline/Wireless, aerial available
<b>C20</b>	37.370254 -80.563195	100/100	Wireline/Wireless, aerial available
<b>C21</b>	37.370395 -80.563114	100/100	Wireline/Wireless, aerial available
<b>C22</b>	37.370577 -80.562999	100/100	Wireline/Wireless, aerial available
<b>C23</b>	37.370525 -80.562790	100/100	Wireline/Wireless, aerial available
<b>C24</b>	37.370465 -80.562615	100/100	Wireline/Wireless, aerial available
<b>C25</b>	37.370690 -80.562676	100/100	Wireline/Wireless, aerial available
<b>C26</b>		100/100	Wireline/Wireless, aerial available
<b>- Campgrounds</b>			Lake will flood campgrounds
<b>Meador</b>	32 sites	100/100 ea	Wireline/Wireless
<b>Coordinates</b>	37.363987 -80.561198		
<b>Electrical Service</b>	Electrical service in 22 slots		Underground
<b>Swimming Pool</b>	37.363660 -80.561835	100/100 ea	Wireline/Wireless
<b>Shower/Toilet facilities 1</b>	37.363684 -80.561673		
<b>Shower/Toilet facilities 2</b>	37.364241 -80.561141		
<b>Old Mill</b>	44 sites	100/100 ea	Wireline/Wireless
<b>Coordinates</b>	37.362455 -80.563888		
<b>Electrical Service</b>	No electrical service		
<b>Shower/Toilet facilities</b>	37.361729 -80.563830		
<b>Tent Area</b>	5 sites	100/100 ea	Wireline/Wireless
<b>Coordinates</b>	37.363864 -80.561876		
<b>Electrical Service</b>	No electrical service		
<b>Shower/Toilet facilities</b>	No facilities		

Appendix B – Bluestone State Park – Priority #5

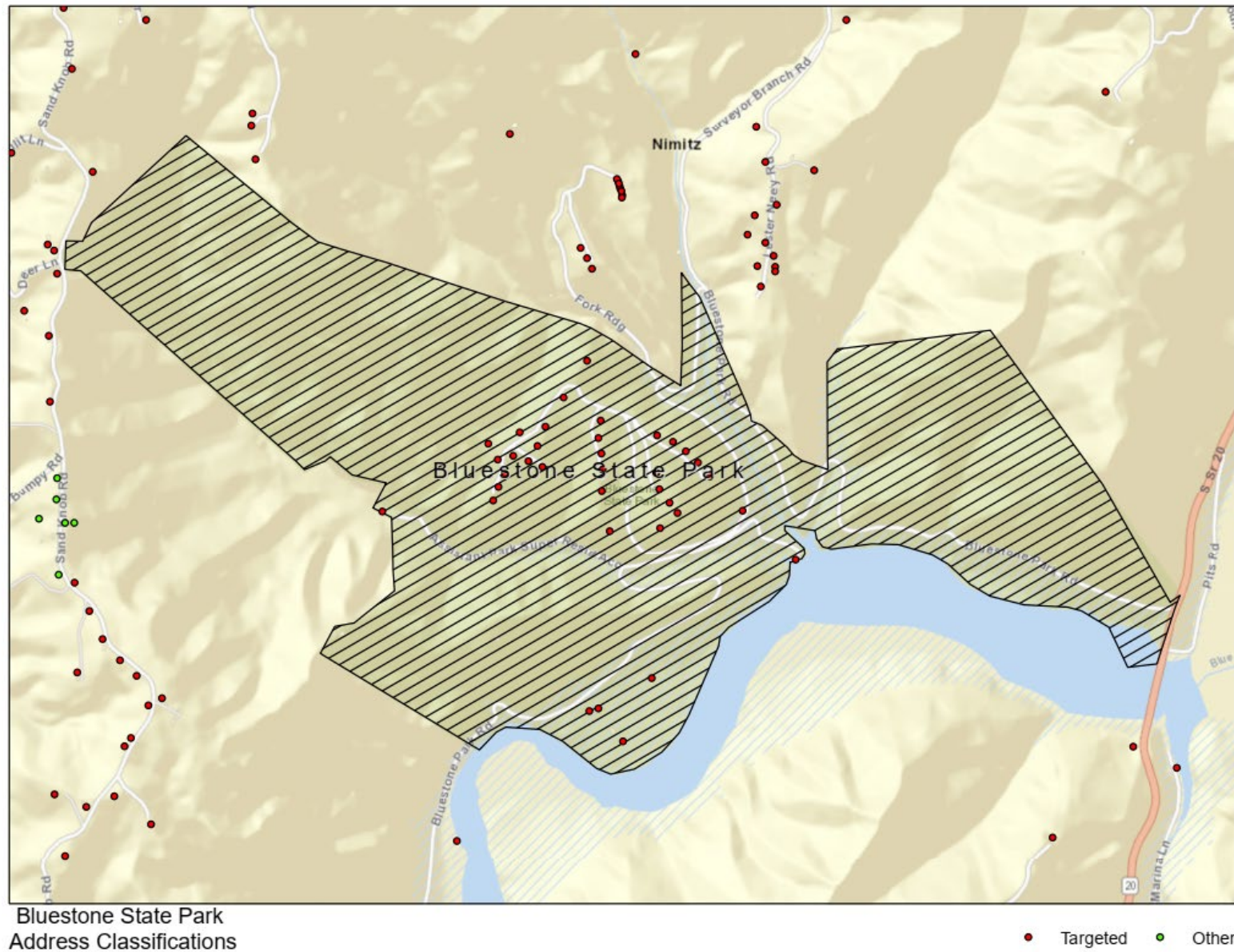
<b>East Shore</b>	39 sites	100/100	Wireless
<b>Coordinates</b>	37.365041 -80.551205		
<b>Electrical Service</b>	No electrical service		
<b>Shower/Toilet facilities</b>	No facilities		
<b>Trails</b>			
Big Pine	1.70 Miles		
Boundary	2.00 Miles		
Cabin	.40 Miles		
Giles, Fayette, Kanawha	1.00 Miles		
Overlook	.50 Miles		
Riverview	1.60 Miles		
Rhododendron	.80 Miles		

*Bluestone State Park Details*



Bluestone State Park Map

Appendix B – Bluestone State Park – Priority #5



Bluestone State Park Address Classification Map

# Appendix B

## Coopers Rock State Park

### Priority #6

## Appendix B – Coopers Rock State Park – Priority #6

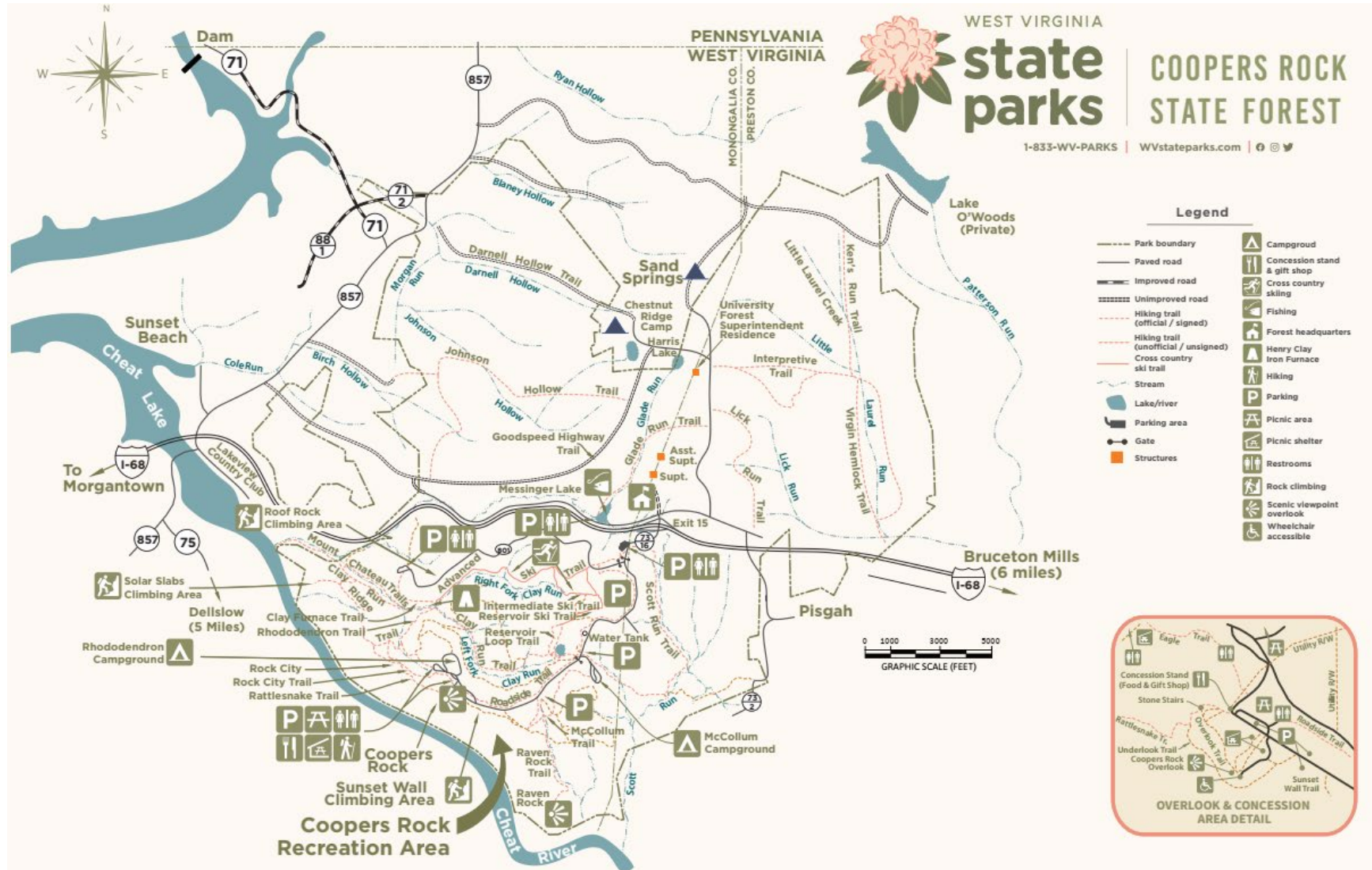
		Bandwidth Needs	Potential delivery method
Priority	6		
County	Monongalia		
Park Name	Coopers Rock State Park		
City	Bruceton Mills		
SqMi	20.70 SqMi		
Acres	13,250.00 Acres		
Roads			
	Interstate 68		
	Highway 73		
	Highway 73/1		
	Highway 73/2		
	Highway 73/12		
	Highway 73/16		
Facilities			
- Headquarters		1G/1G	Wireline, Fiber present
- Maintenance Facility		100/100	Wireline/Wireless, Fiber present
- Superintendent House			
- Assistant Superintendent House		100/100	Wireline/Wireless, Fiber present
-Gift Shop (Trading Post) and paved parking area	39.381704 -79.485691	100/100	Wireline/Wireless
-Overlook Picnic shelters (2)		100/100	Wireline/Wireless
- Cabins	25 cabins to be built	100/100	Wireline/Wireless to new cabin area
- Water tank building		25/3	
-Campgrounds			
McCollum	25 sites existing + 25 new	100/100	Wireless
Coordinates	39.382136 -79.472970		
Electrical Service	Electric service at 25 sites		
Shower/Toilet facilities 1	39.382057 -79.473249	100/100	Wireless
CG check in station		100/100	Wireless



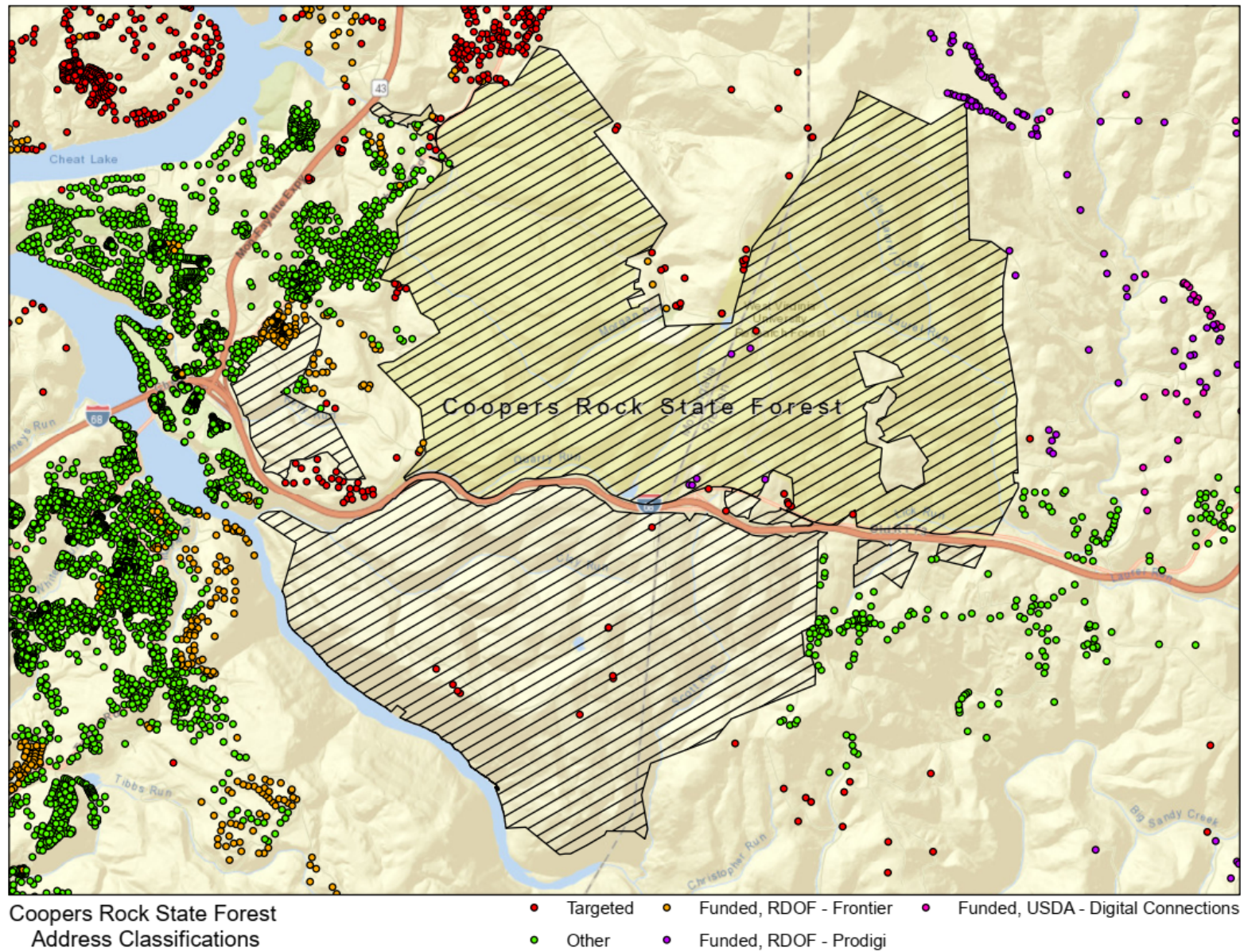
Appendix B – Coopers Rock State Park – Priority #6

<b>Rhododendron</b>	25 sites + new	100/100	Wireless
<b>Coordinates</b>	39.382218 -79.485210		
<b>Electrical Service</b>	No electrical services		
<b>Shower/Toilet facilities</b>	No facilities		
<b>Trails</b>			
Clay Furnace	.80 Miles		
Clay Run	1.80 Miles		
Darnell Hollow	4.00 Miles		
Eagle	.30 Miles		
Glade Run	1.50 Miles		
Goodspeed Highway	3.00 Miles		
Johnson Hollow	3.00 Miles		
Ken's Run	4.50 Miles		
Lick Run	1.80 Miles		
McCollum	1.00 Miles		
Mont Chateau	2.60 Miles		
Rattlesnake	.70 Miles		
Ravens Rock	1.50 Miles		
Reservoir Loop	.70 Miles		
Rhododendron	1.00 Miles		
Ridge	1.50 Miles		
Rock City	1.00 Miles		
Roadside	3.00 Miles		
Scott Run	2.50 Miles		
Underlook	.20 Miles		
Virgin Hemlock	1.20 Miles		
<b>Ski Trails</b>			
Intermediate	.60 Miles		
Advanced	2.30 Miles		
Reservior	.80 Miles		

Coopers State Park Details







Coopers Rock State Park Address Classifications Map

# Appendix B

## Babcock State Park

### Priority #7

Appendix B – Babcock State Park – Priority #7

		Bandwidth Needs	Potential delivery method
<b>Priority</b>	<b>7</b>		
<b>County</b>	Fayette		
<b>Park Name</b>	<b>Babcock State Park</b>		
<b>City</b>	Clifftop		
<b>SqMi</b>	6.37 SqMi		
<b>Acres</b>	4,127.00 Acres		
<b>Roads</b>			
	Highway 11		
	Park Forest 802		
	Park Forest 809		
	Park Forest 808		
	Park Forest 807		
	Park Forest 802		
	Babcock Road		
	Old Sewell Road		
	Park Forest 801		
	Park Forest 805		
<b>Facilities</b>			
- Headquarters & Gift Shop	37.584770 -80.564504	1G/1G	Wireline, aerial available
- Maintenance Facility	37.590185 -80.562091	100/100	Wireline/Wireless, aerial available
- Superintendent House	38.001803 -80.564776	100/100	Wireline/Wireless, aerial available
- Assistant Superintendent House	37.585994 -80.562257	100/100	Wireline/Wireless, aerial available
- Supply Building	38.001471 -80.565292		
- Swimming Pool	37.584235 -80.571594		
- Boat Ramp/Dock	37.583833 -80.570765		
- Boat Rental Station	37.584203 -80.570923	100/100	Wireline/Wireless
- Cabins			
Cabin Area	37.594029 -80.572528	100/100	Wireline/Wireless, aerial available

Appendix B – Babcock State Park – Priority #7

<b>C1</b>	37.585393 -80.563638	100/100	Wireline/Wireless, aerial available
<b>C2</b>	37.585474 -80.563566	100/100	Wireline/Wireless, aerial available
<b>C3</b>	37.585604 -80.563525	100/100	Wireline/Wireless, aerial available
<b>C4</b>	37.585816 -80.563432	100/100	Wireline/Wireless, aerial available
<b>C5</b>	37.585973 -80.563605	100/100	Wireline/Wireless, aerial available
<b>C6</b>	37.590065 -80.563843	100/100	Wireline/Wireless, aerial available
<b>C7</b>	37.585765 -80.563884	100/100	Wireline/Wireless, aerial available
<b>C8</b>	37.585962 -80.564327	100/100	Wireline/Wireless, aerial available
<b>C9</b>	37.585907 -80.564697	100/100	Wireline/Wireless, aerial available
<b>C10</b>	37.585880 -80.565210	100/100	Wireline/Wireless, aerial available
<b>C11</b>	37.585910 -80.565499	100/100	Wireline/Wireless, aerial available
<b>C12</b>	37.585931 -80.565590	100/100	Wireline/Wireless, aerial available
<b>C13</b>	37.590129 -80.565807	100/100	Wireline/Wireless, aerial available
<b>C14</b>	37.594183 -80.571717	100/100	Wireline/Wireless, aerial available
<b>C15</b>	37.594333 -80.571756	100/100	Wireline/Wireless, aerial available
<b>C16</b>	37.594583 -80.571543	100/100	Wireline/Wireless, aerial available
<b>C17</b>	37.594668 -80.571686	100/100	Wireline/Wireless, aerial available
<b>C18</b>	37.594814 -80.571755	100/100	Wireline/Wireless, aerial available
<b>C19</b>	37.594744 -80.571484	100/100	Wireline/Wireless, aerial available
<b>C20</b>	37.594618 -80.571413	100/100	Wireline/Wireless, aerial available
<b>C21</b>	37.595065 -80.571386	100/100	Wireline/Wireless, aerial available
<b>C22</b>	37.595117 -80.571440	100/100	Wireline/Wireless, aerial available
<b>C23</b>	37.595159 -80.571492	100/100	Wireline/Wireless, aerial available
<b>C24</b>	37.595194 -80.571585	100/100	Wireline/Wireless, aerial available
<b>C25</b>	37.595297 -80.571612	100/100	Wireline/Wireless, aerial available
<b>C26</b>	37.595290 -80.571531	100/100	Wireline/Wireless, aerial available
<b>C27</b>	37.595255 -80.571492	100/100	Wireline/Wireless, aerial available
<b>C28</b>	37.595100 -80.571296	100/100	Wireline/Wireless, aerial available
<b>- Campgrounds</b>			
<b>Primary Campground</b>	52 sites	100/100 ea	Wireline/Wireless, aerial available

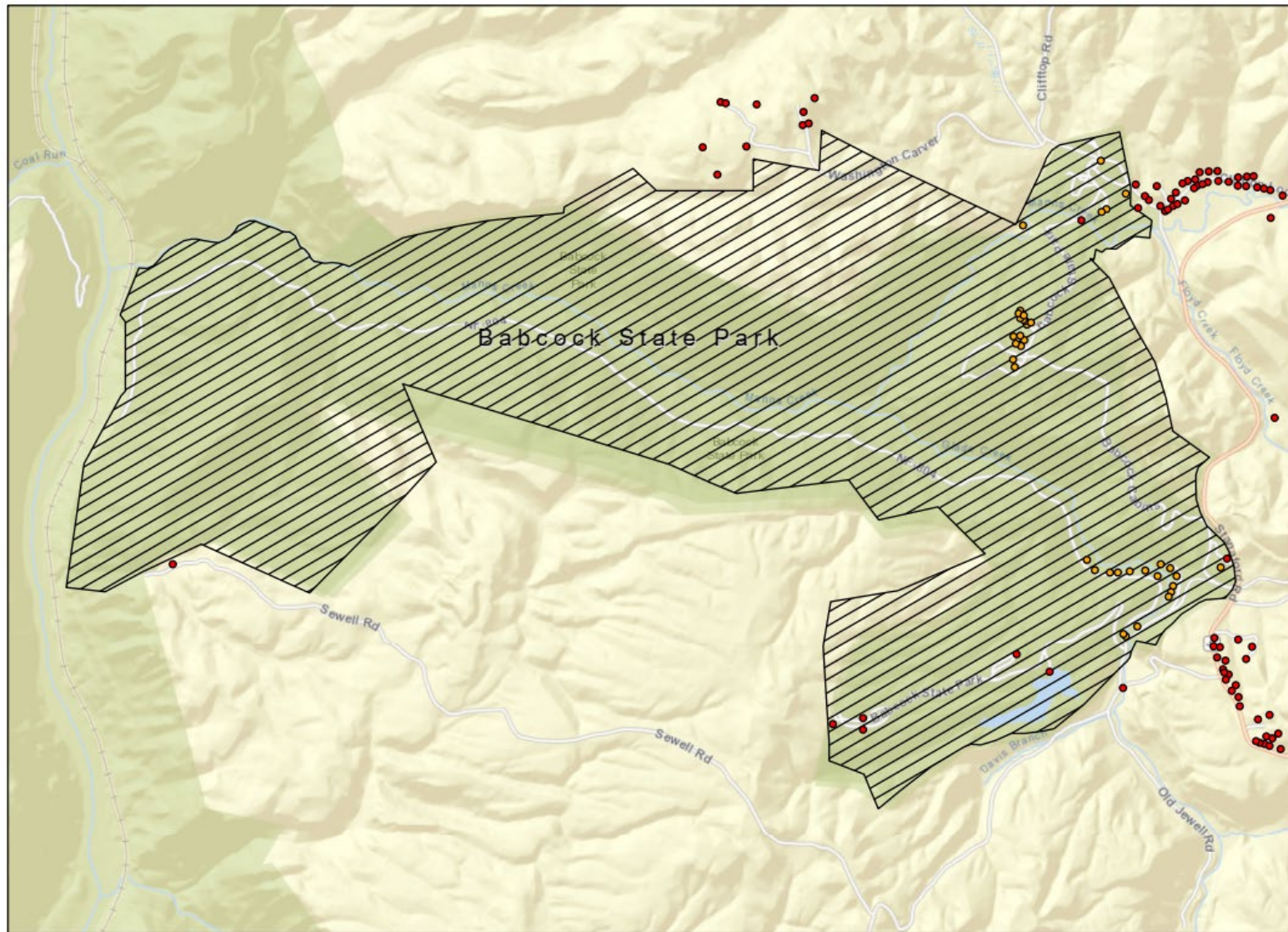


Appendix B – Babcock State Park – Priority #7

<b>Coordinates</b>	38.002072 -80.565925		
<b>Electrical Service</b>	Electric service to 28 sites		
<b>Shower/Toilet facilities 1</b>	38.002126 -80.565963		
<b>Tent Campgrounds</b>	38.002886 -80.565729	100/100	Wireline/Wireless
<b>Shower/Toilet facilities</b>	No facilities		
<b>Sugar Camp Run</b>	37.582725 -80.580533		
<b>Shower/Toilet facilities</b>	37.582804 -80.580064		
<b>Trails</b>			
Connector	.01 Miles		
Island In the Sky	.50 Miles		
Lake View	1.00 Miles		
Manns Creek Gorge	2.00 Miles		
Mountain Heath	.25 Miles		
Narrow Gauge	2.50 Miles		
North Slope	.50 Miles		
Old Pond	1.50 Miles		
Ridge Top	2.00 Miles		
Rocky	.50 Miles		
Short Cut	.06 Miles		
Skyline	2.00 Miles		
Triple Creek	1.00 Miles		
Twin Hollow	.50 Miles		
Wilderness	1.50 Miles		

*Babcock State Park Details*

41 | Page



Babcock State Park  
Address Classifications

● Targeted    ● Funded, RDOF - Frontier

*Babcock State Park Address Classifications Map*

# Appendix B

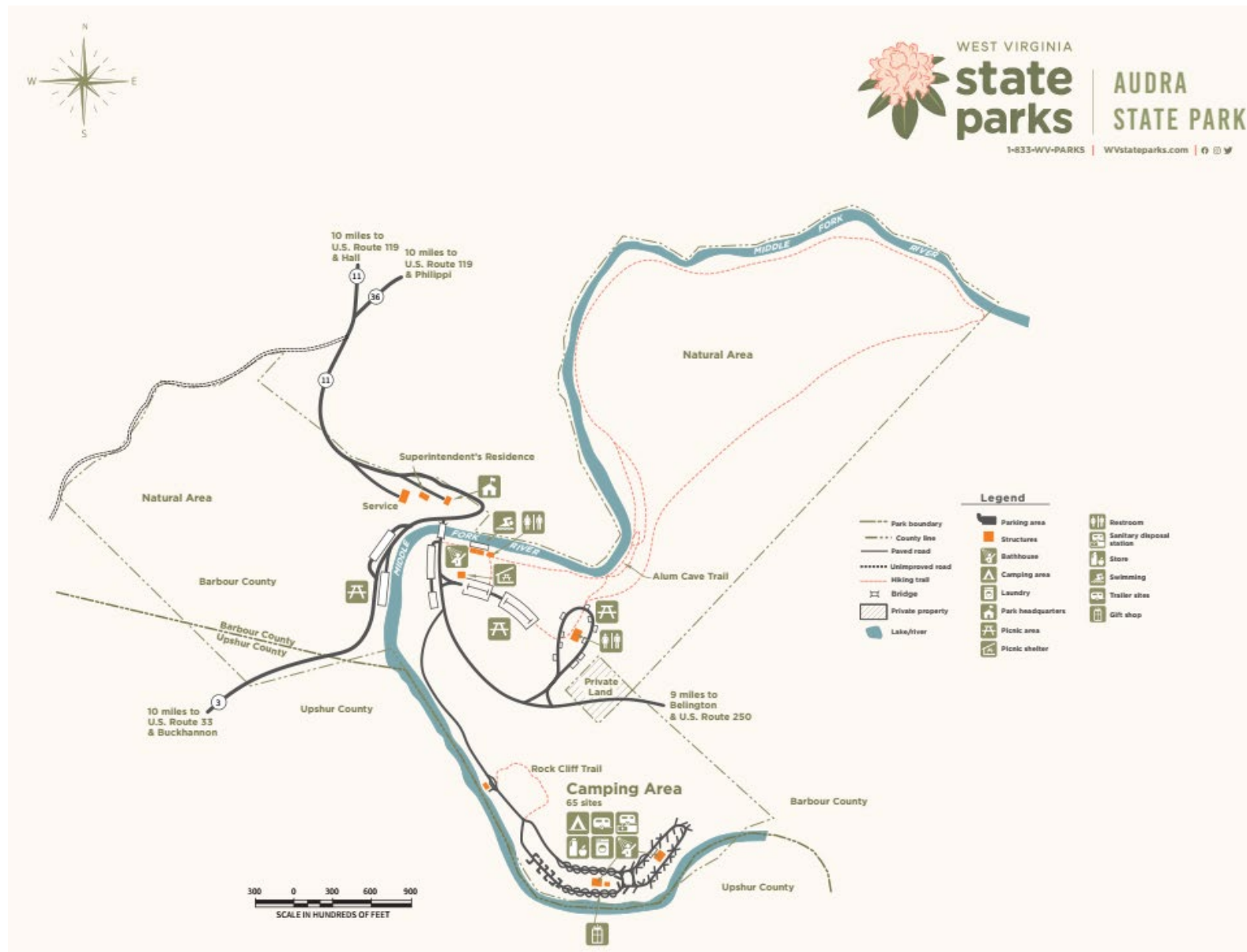
## Audra State Park

### Priority #8

		Bandwidth Needs	Potential delivery method
<b>Priority</b>	<b>8</b>		
<b>County</b>	Barbour		
<b>Park Name</b>	<b>Audra State Park</b>		
<b>City</b>	Buckhannon		
<b>SqMi</b>			
<b>Acres</b>			
<b>Roads</b>			
	Highway 11		
<b>Facilities</b>			
- Headquarters & Gift Shop	39.023132 -80.040477	1G/1G	Wireline, aerial available
- Maintenance Facility	39.022987 -80.040856	100/100	Wireline/Wireless, aerial available
- Superintendent House	39.023105 -80.040668	100/100	Wireline/Wireless, aerial available
- Picnic Area 1 Shelter	39.022722 -80.040019	100/100	Wireline/Wireless, aerial available
Shower	39.022737 -80.035871		
Toilet	39.022742 -80.035747		
- Picnic Area 2 Shelter	39.022337 -80.035849	100/100	Wireline/Wireless, aerial available
Toilet	39.022259 -80.034830		
- Cabins	N/A		
- Campgrounds	67 sites		
Coordinates	39.020557 -80.033892	100/100	Wireline/Wireless, aerial available
Electrical Service	Electric service at 50 sites		Aerial
Shower/Toilet facilities 1	39.020547 -80.033769		
Shower/Toilet facilities 2	39.020822 -80.033169		
<b>Trails</b>			
Alum Creek and Cave	2.70 Miles	25/3	Wireless

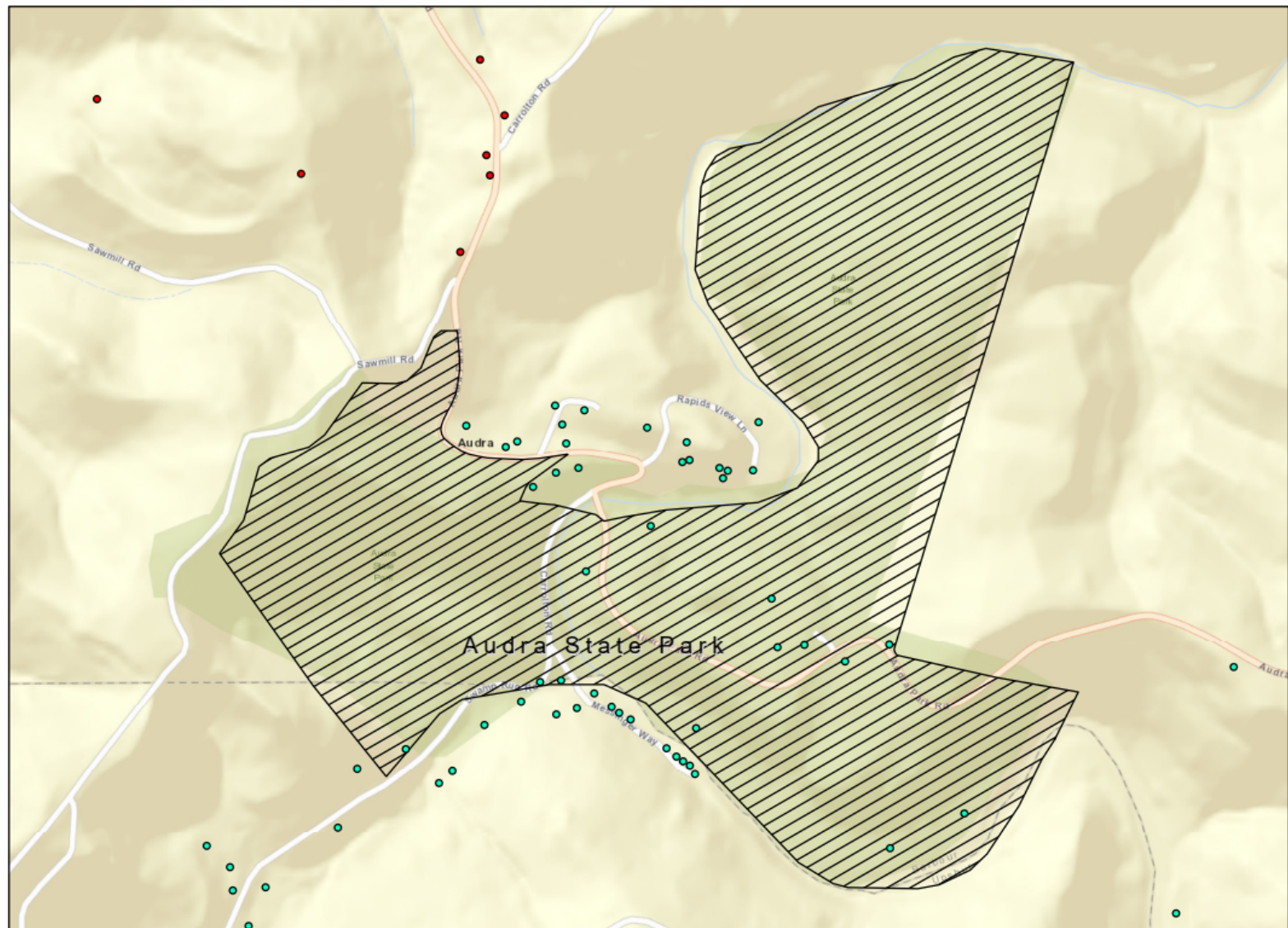
Audra State Park Details





Audra State Park Map





Audra State Park  
Address Classifications

● Targeted    ● Funded, USDA - Central WV Development

*Audra State Park Address Classification Map*

# Appendix B

## Cedar Creek State Park

### Priority #9

Appendix B – Cedar Creek State Park – Priority #9

		Bandwidth Needs	Potential delivery method
<b>Priority</b>	<b>9</b>		
<b>County</b>	Gilmer		
<b>Park Name</b>	<b>Cedar Creek State Park</b>		
<b>City</b>	Glenville		
<b>SqMi</b>	3.91 SqMi		
<b>Acres</b>	2,588.00 Acres		
<b>Roads</b>			
	Highway 17		
	Highway 17/2		
	Park and Forest Route 803		
	Park and Forest Route 801		
	Park and Forest Route 802		
<b>Facilities</b>			
- Headquarters	38.525737 -80.511980	1G/1G	Wireline, aerial available
- Maintenance Facility	38.524720 -80.514274	100/100	Wireline/Wireless, aerial available
- Paddle Boat Dock	38.525793 -80.511900		
- Ball Field	38.525797 -80.512303		
- Recreation Building	38.524928 -80.511536	100/100	Wireline/Wireless
- Tennis/Basketball Courts	38.525124 -80.511372		
- Swimming Pool	38.524645 -80.511108	100/100	Wireless
- Swimming Pool Showers	38.524712 -80.511169		
- Apple Picnic Area shelter	38.524586 -80.511432	25/3	Wireless
- Hickory Picnic Area shelter	38.524485 -80.510459	25/3	Wireless
- Hickory Picnic Area Toilets	38.524359 -80.510337		
- Picnic Area	38.523657 -80.510340		
- Store and Check-in	38.525245 -80.514010	100/100	Wireless
- Showers/Toilets 1	38.524599 -80.515987	100/100	Wireless
- Toilets & Laundry	38.523572 -80.521486		

Appendix B – Cedar Creek State Park – Priority #9

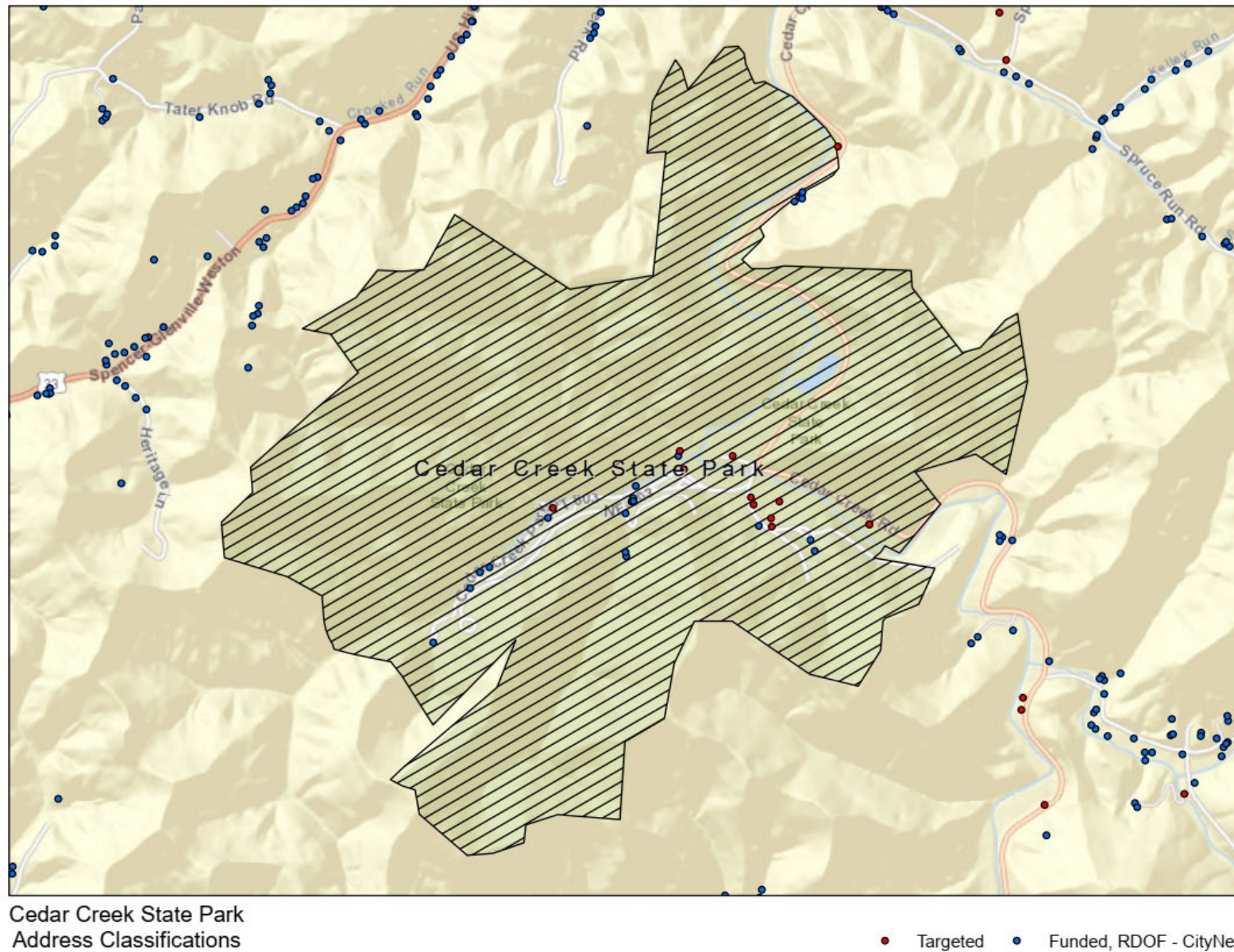
- Showers/Toilets 2	38.522678 -80.522324	100/100	Wireless
- Superintendent House	38.525036 -80.514073	100/100	Wireline/Wireless, aerial available
- Assistant Superintendent House	38.525733 -80.513121	100/100	Wireline/Wireless, aerial available
- Cabins	N/A		
- Campgrounds	76 sites		
Coordinates	38.522961 -80.523144	100/100 ea	Wireline/Wireless
Electrical Service	Electric service at 76 sites		
<b>Trails</b>			
Fishermans's	1.50 Miles		
Grassy Ridge	.25 Miles		
Nightingale	.50 Miles		
North Boundary	1.00 Miles		
Park View	1.75 Miles		
Stone Trough	2.50 Miles		
Two Run	2.50 Miles		

*Cedar Creek State Park Details*



Cedar Creek State Park Map





Cedar Creek State Park Address Classifications Map

# Appendix B

## Little Beaver State Park

### Priority #10

Appendix B – Little Beaver State Park – Priority #10

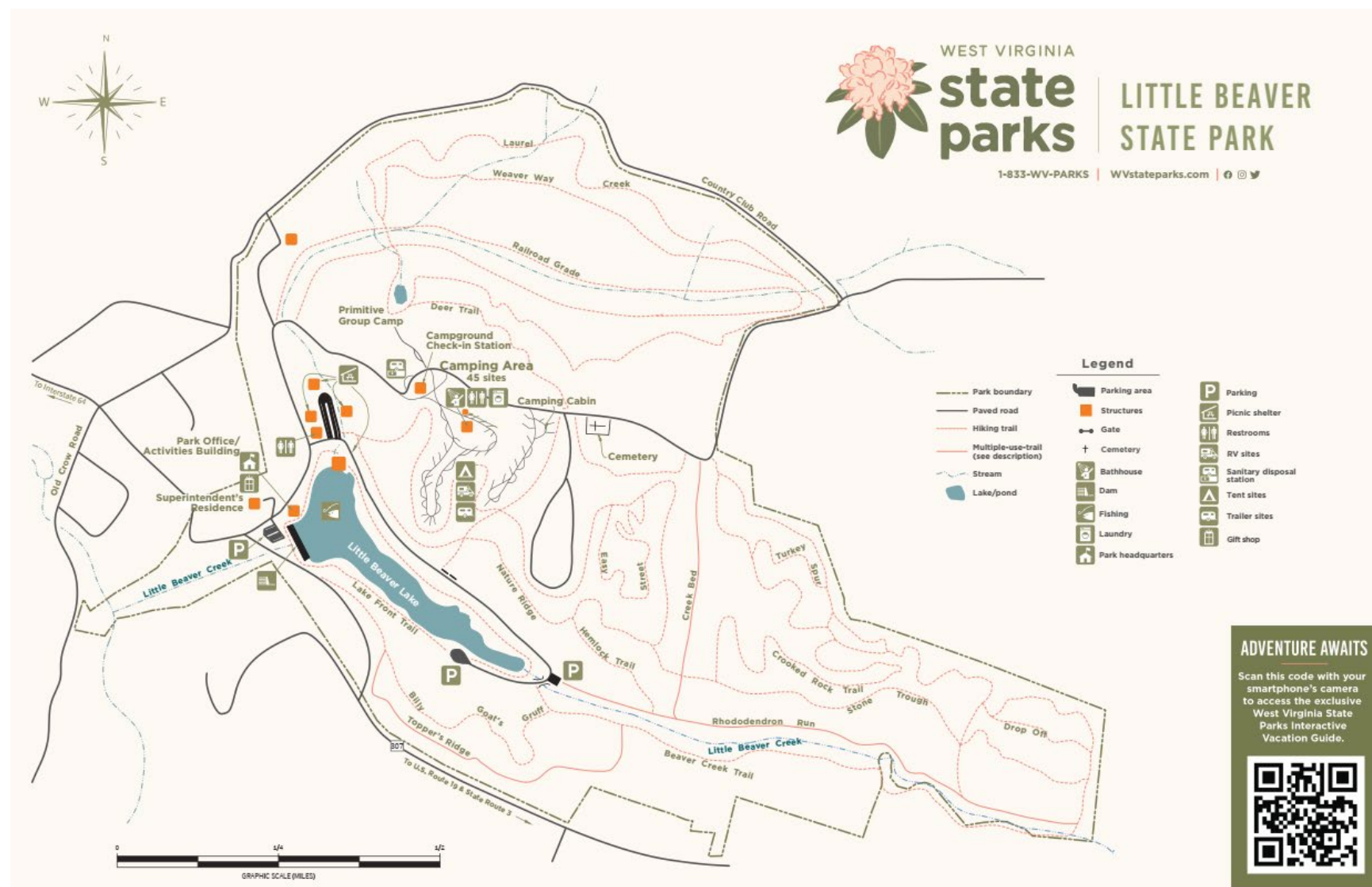
		Bandwidth Needs	Potential delivery method
<b>Priority</b>	<b>10</b>		
<b>County</b>	Raleigh		
<b>Park Name</b>	<b>Little Beaver State Park</b>		
<b>City</b>	Beaver		
<b>SqMi</b>	.86 SqMi		
<b>Acres</b>	551.00 Acres		
<b>Roads</b>			
	Highway 307		
	Little Beaver Campground Road		
<b>Facilities</b>			
- Headquarters & Gift Shop	37.451693 -81.044568	1G/1G	Wireline
- Picnic Area	37.451428 -81.043624	100/100	Wireline/Wireless
- Picnic Area Toilets	37.451440 -81.043836		
- Superintendent House	37.451920 -81.044489	100/100	Wireline/Wireless
- Campgrounds Check-in Station	37.450716 -81.043451	100/100	Wireline/Wireless
- Cabins	N/A		
- Campgrounds	46 slots		
Coordinates	37.450524 -81.044203	100/100 ea	Wireline/Wireless
Electrical Service	Electric service at 30 sites		
Shower/Toilet facilities 1	37.450309 -81.043795		
<b>Trails</b>			
Beaver Creek	.70 Miles		
Billy Boat's Gruff	.60 Miles		
Creek Bed	.40 Miles		
Crooked Rock	1.20 Miles		
Deer	.80 Miles		
Drop Off	.40 Miles		
Easy Street	.50 Miles		

Appendix B – Little Beaver State Park – Priority #10

Hemlock	.25 Miles		
Laurel Creek	2.60 Miles		
Lake Front	1.10 Miles		
Nature Ridge	2.20 Miles		
Railroad Grade	1.95 Miles		
Rhododendron Run	2.50 Miles		
Stone Trough	.90 Miles		
Toppers Ridge	.70 Miles		
Turkey Spur	.50 Miles		
Weaver Way	1.50 Miles		

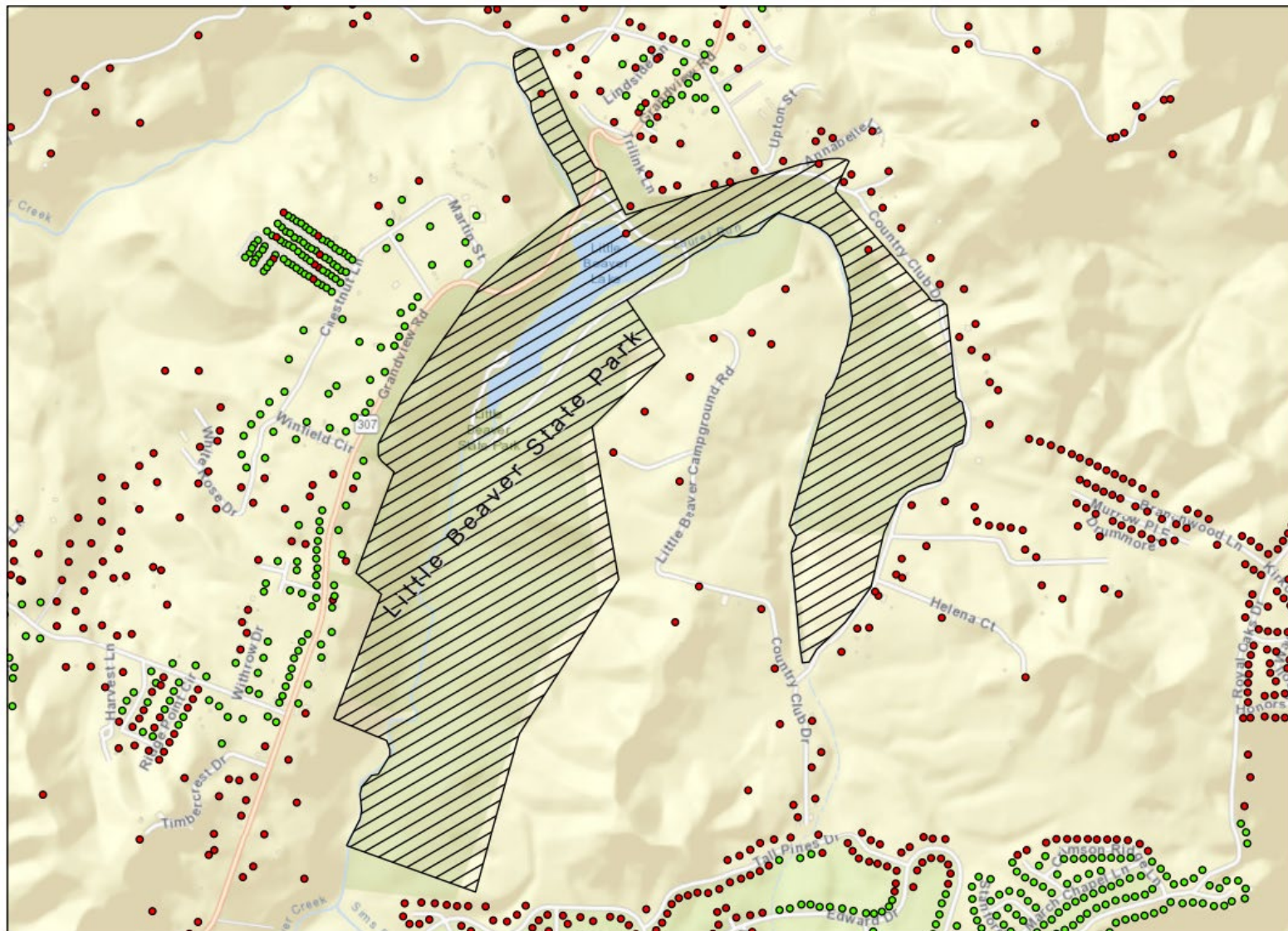
*Little Beaver State Park Details*

## Appendix B – Little Beaver State Park – Priority #10



Little Beaver State Park Map





Little Beaver State Park  
Address Classifications

● Targeted ● Other

*Little Beaver State Park Address Classification Map*

# Appendix B

## Carnifex Ferry Battleground State Park

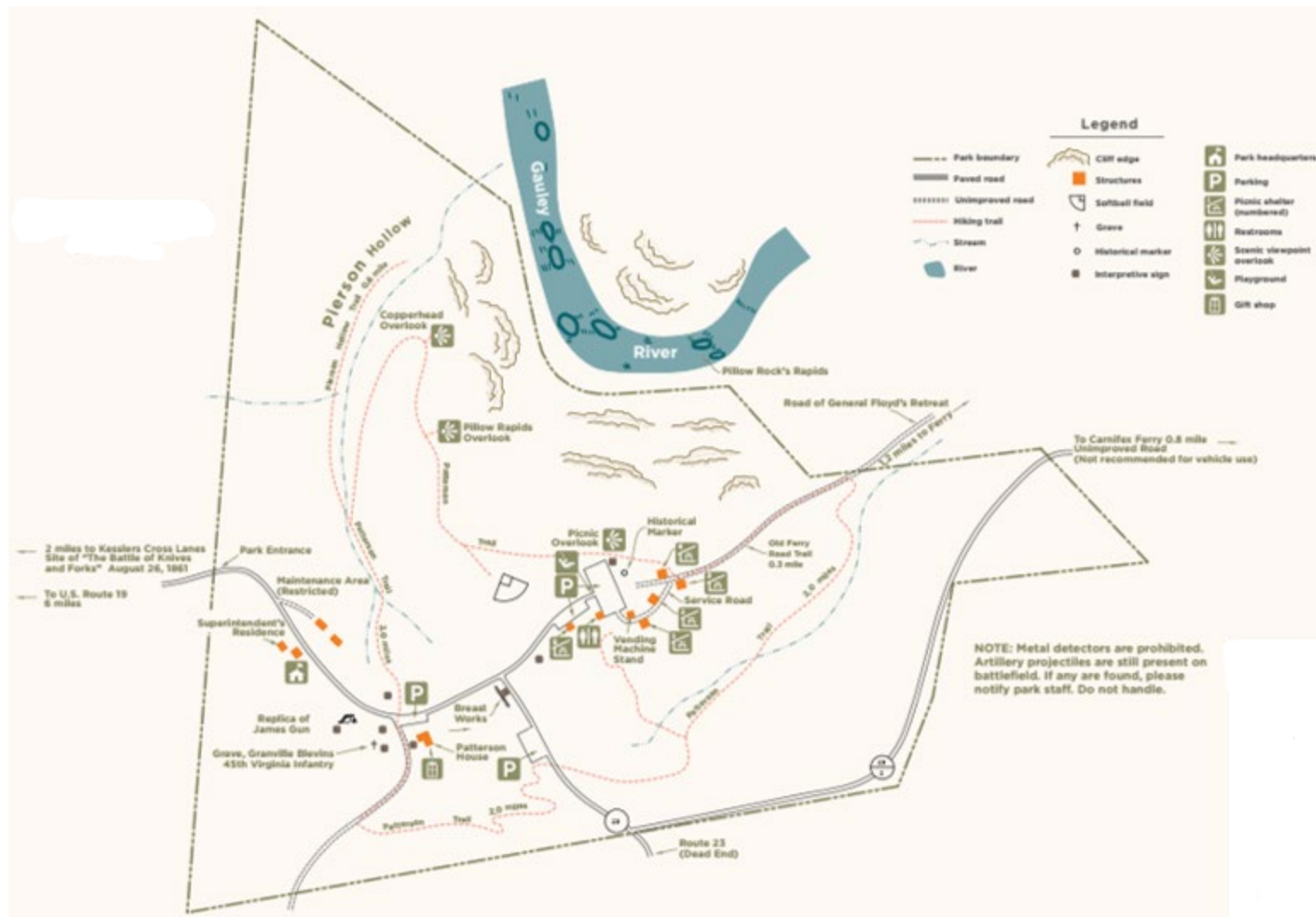
### Priority #11

Appendix B – Carnifex Ferry Battleground State Park – Priority #11

		Bandwidth Needs	Method
<b>Priority</b>	<b>11</b>		
<b>County</b>	Nicholas		
<b>Park Name</b>	<b>Carnifex Ferry Battleground State Park</b>		
<b>City</b>	Summersville		
<b>SqMi</b>	.47 SqMi		
<b>Acres</b>	298 Acres		
<b>Roads</b>			
	Highway 23		
<b>Facilities</b>			
- Headquarters	38.124357 -80.562679	1G/1G	Wireline
- Patterson House & Gift Shop	38.123770 -80.563209	100/100	Wireline/Wireless
- Picnic Area	38.122527 -80.562510		
- Superintendent House	38.124462 -80.562581	100/100	Wireline/Wireless
- Cabins	N/A		
- Campgrounds	N/A		
<b>Trails</b>			
Old Ferry Road	.30 Miles		
Patterson Trail	2.00 Miles		
Pierson Hollow Trail	.60 Miles		

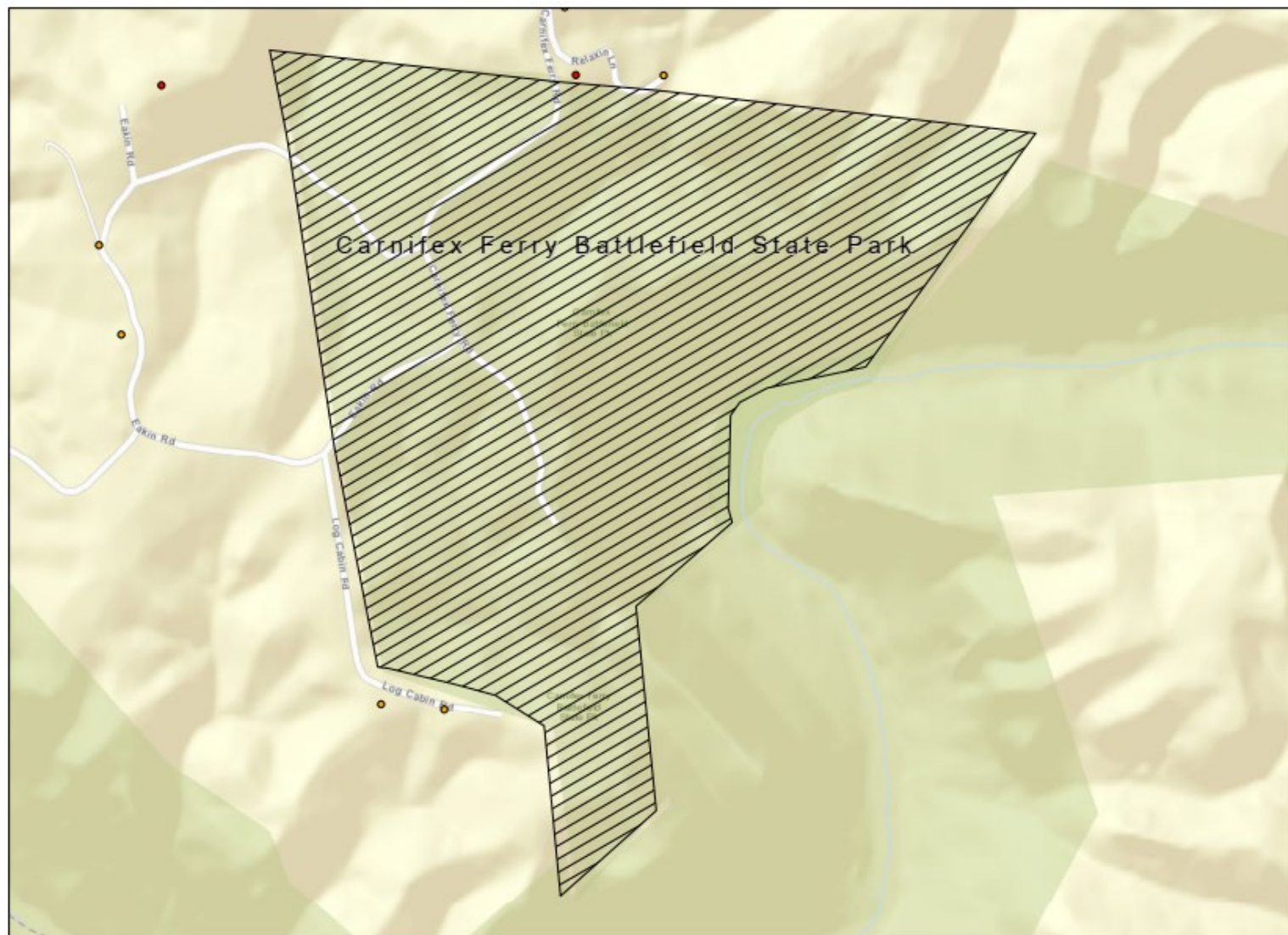
*Carnifex Ferry Battleground State Park Details*

## Appendix B – Carnifex Ferry Battleground State Park – Priority #11



Carnifex Ferry Battleground State Park Map





Carnifex Ferry Battlefield State Park  
Address Classifications

● Targeted ● Funded, RDOF - Frontier

*Carnifex Ferry Battleground Park Address Classification Map*



# Appendix B

## Tomlinson Run State Park

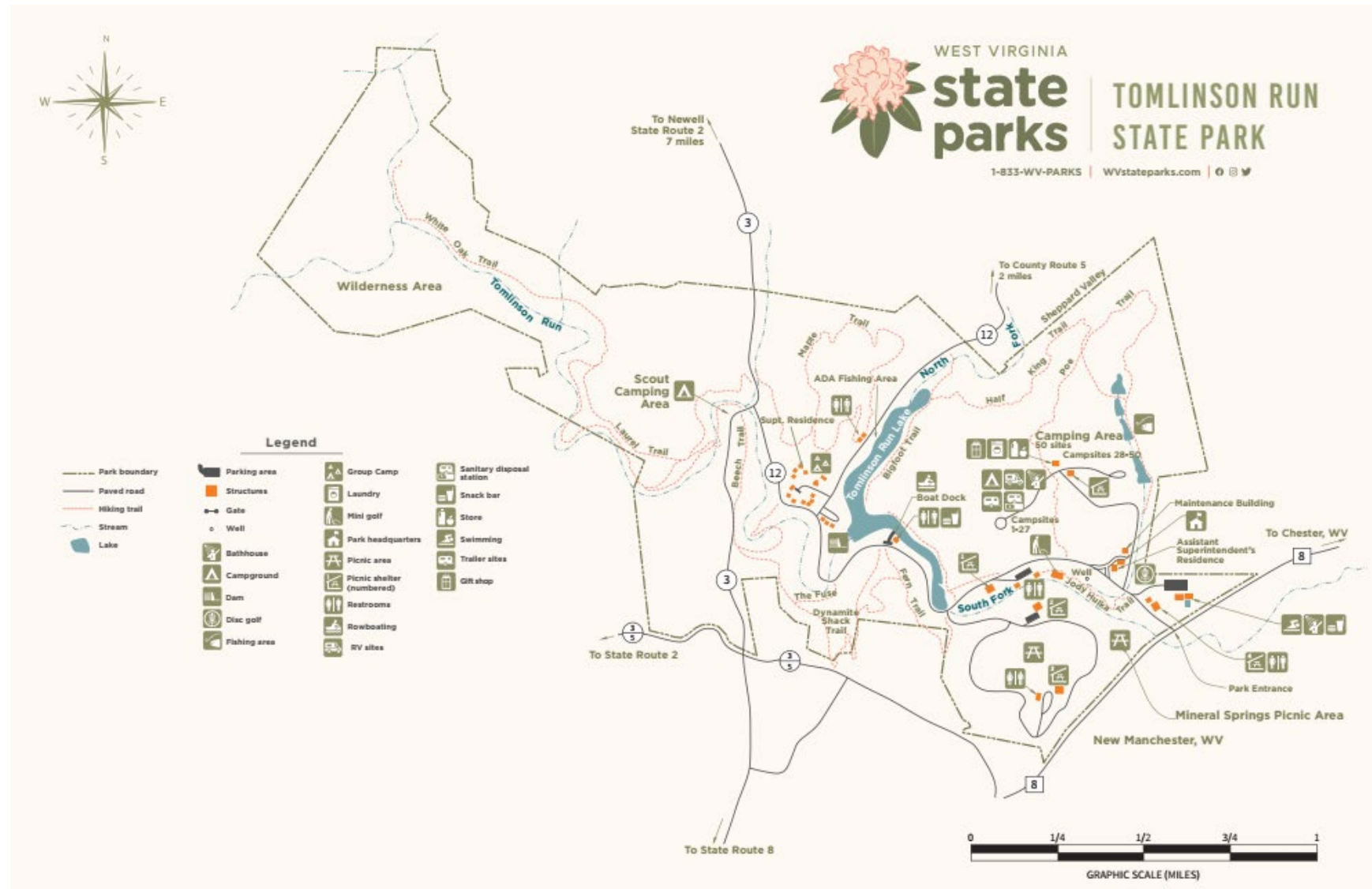
### Priority #12

Appendix B – Tomlinson Run State Park – Priority #12

		Bandwidth Needs	Method
<b>Priority</b>	<b>12</b>		
<b>County</b>	Hancock		
<b>Park Name</b>	<b>Tomlinson Run State Park</b>		
<b>City</b>	New Cumberland		
<b>SqMi</b>	2.12 SqMi		
<b>Acres</b>	1,359.00 Acres		
<b>Roads</b>			
	Highway 3		
	Park Forest 801		
	Shepards Valley Rd		
<b>Facilities</b>			
- Headquarters	40.323099 -80.343127	1G/1G	Wireline, aerial available, Fiber present
- Maintenance Facility	40.323365 -80.343102	100/100	Wireline/Wireless, aerial available
- Superintendent House	40.324298 -80.353240	100/100	Wireline/Wireless, aerial available
- Assistant Superintendent House	40.343245 -80.353245	100/100	Wireline/Wireless, aerial available
- Cabins			
- Campgrounds	55 sites (includes 5 camping cabin, 1 shelter, and 2 yurts)		Wireline conduit exists, Wireless
Campgrounds 1	40.324089 -80.353400	100/100	Wireline conduit exists, Wireless
Campgrounds 2	40.325084 -80.345138	100/100	Wireline conduit exists, Wireless
<b>Trails</b>			
Beech Trail	35 Minutes		
Big Foot Trail	60 Minutes		
Fern Trail	20 Minutes		
Laurel Trail	70 Minutes		
Maple Trail	40 Minutes		
Poe Trail	45 Minutes		

*Tomlinson Run State Park Details*

## Appendix B – Tomlinson Run State Park – Priority #12



Tomlinson Run State Park Map

Tomlinson Run State Park Address Classification Map

# Appendix B

## Kanawha State Forest

### Priority #13

Appendix B – Kanawha State Forest – Priority #13

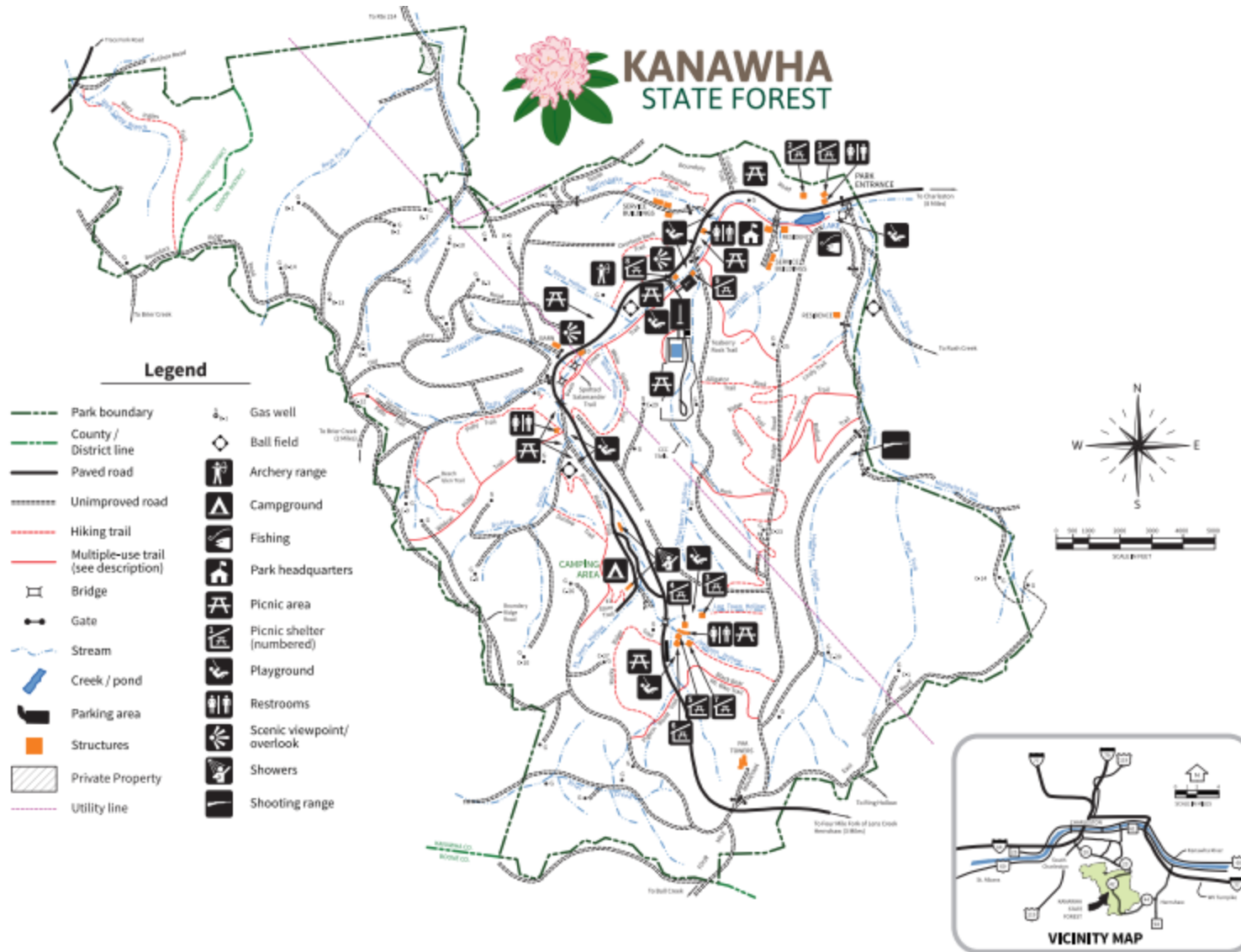
		Bandwidth Needs	Method
<b>Priority</b>	<b>13</b>		
<b>County</b>	Kanawha		
<b>Park Name</b>	<b>Kanawha State Forest</b>		
<b>City</b>	Charleston		
<b>SqMi</b>	11.20 SqMi		
<b>Acres</b>	7,143.00 Acres		
<b>Roads</b>			
	Highway 42		
<b>Facilities</b>			
- Headquarters/Gift Shop/Museum	38.164356 -80.390094	1G/1G	Wireline, aerial available
- Maintenance Facility	38.164047 -81.385888	100/100	Wireline/Wireless, aerial available
- Superintendent House	38.164336 -81.385872	100/100	Wireline/Wireless, aerial available
-Campground	45 sites	100/100	Wireline/Wireless, aerial available
-Campground check-in/gift shop station		100/100	Wireline/Wireless, aerial available
-Assistant Superintendent House		100/100	Wireline/Wireless, aerial available
- Cabins	N/A		
<b>Trails</b>			
#1 Store Trail	.25 Miles		
Alligator Rock Trail	.50 Miles		
Beech Glen Trail	1.50 Miles		
CCC Snipe Trail	.75 Miles		
Hemlock Falls Trail	.75 Miles		
Johnson Hollow Trail	.75 Miles		
Lindy Trail	.50 Miles		
Logtown Trail	.75 Miles		
Overlook Rock Trail	1.50 Miles		
Polly Trail	1.50 Miles		
Rattlesnake trail	1.00 Miles		
Rocky Ridge Trail	2.00 Miles		



## Appendix B – Kanawha State Forest – Priority #13

Spotted Salamander Trail	.25 Miles		
While Hollow Trail	2.00 Miles		

*Kanawha State Forest Details*



Kanawha State Forest Map

