

Appendix B

WIN Attachment - Park Details and Maps

Updated May 2, 2022

Attachment 1 Watoga State Park Priority #1

Attachment 1 – Watoga State Park – Priority #1

		Bandwidth Needs	Potential delivery method
Priority	1		
County	Pocahontas		
Park Name	Watoga State Park		
City	Marlinton		
SqMi	15.90 SqMi		
Acres	10,162.00 Acres		
Roads			
	Highway 27/3		
	Park and Forest Route 819		
Facilities			
- Headquarters	38.11642 -80.12786	1G/1G	Wireline, aerial available
- Maintenance Facility	38.062027 -80.053994	100/100	Wireline, aerial available
- Supply Building	38.052306 -80.065454	100/100	Wireline, aerial available
- Superintendent House	38.052826 -80.065874	100/100	Wireline, aerial available
- Assistant Superintendent House	38.061789 -80.053915	100/100	Wireline, aerial available
- Rec Hall & Museum	38.070106 -80.070387	100/100	Wireline, aerial available
- Swimming Pool	38.070088 -80.071101	100/100	Wireline/wireless, aerial available
- Tennis & Basketball Courts	38.065902 -80.070312	100/100	Wireline/wireless, aerial available
- Ann Bailey Lookout Tower	38.063040 -80.100319	100/100	Wireless
- Cabins	34 Cabins	100/100	Wireline/wireless, aerial available
Cabins 1 & 2	38.070322 -80.102561	100/100	Wireline/wireless, aerial available
Cabins 3 & 4	38.072267 -80.090495	100/100	Wireline/wireless, aerial available
Cabins 5 & 6	38.071667 -80.085556	100/100	Wireline/wireless, aerial available
C7	38.071402 -80.084562	100/100	Wireline/wireless, aerial available
C8	38.071760 -80.083575	100/100	Wireline/wireless, aerial available
C9	38.071930 -80.083401	100/100	Wireline/wireless, aerial available
C10	38.072204 -80.083290	100/100	Wireline/wireless, aerial available
C11	38.072052 -80.082822	100/100	Wireline/wireless, aerial available

Attachment 1 – Watoga State Park – Priority #1

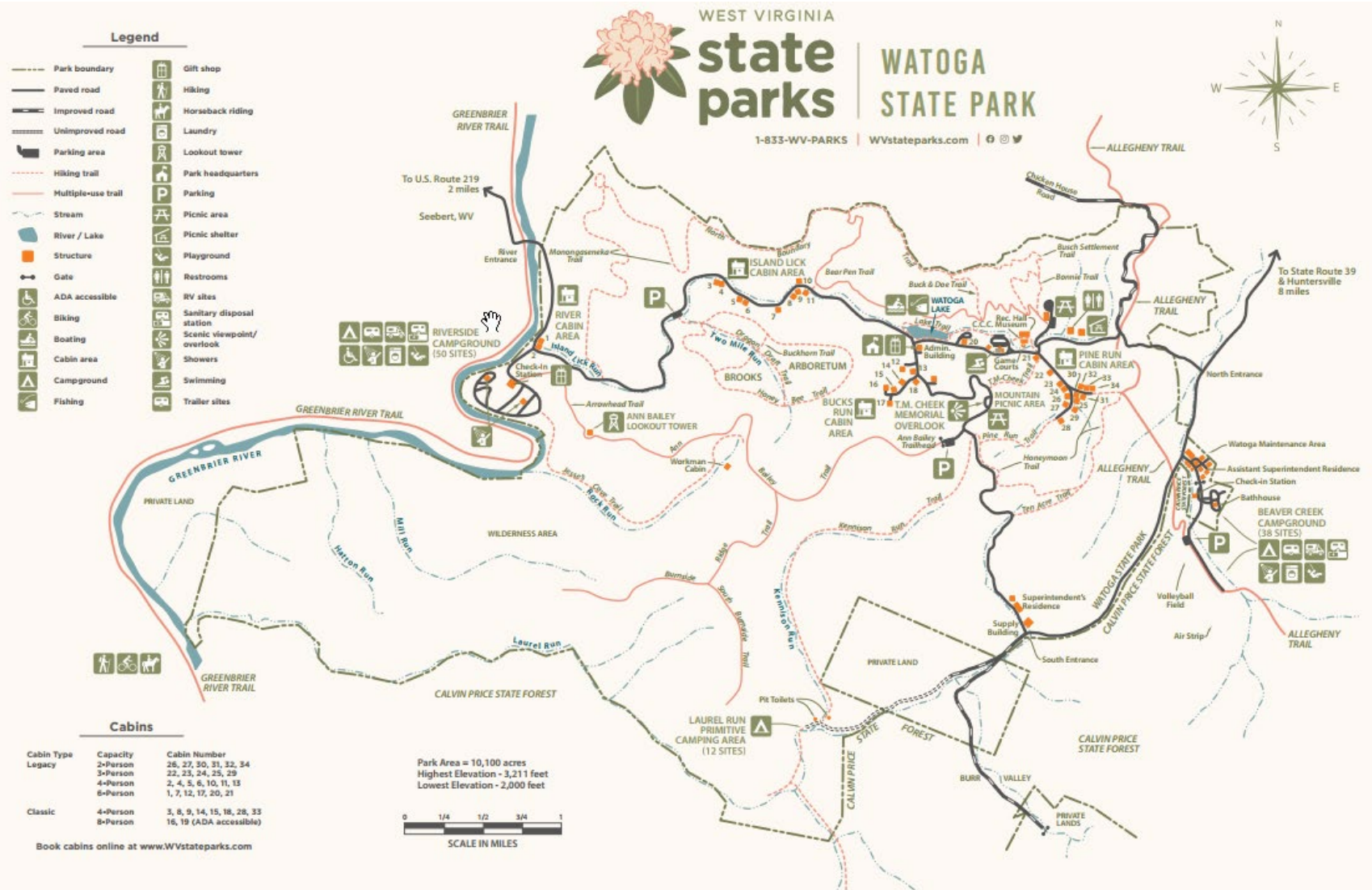
C12	38.065294 -80.074164	100/100	Wireline/wireless, aerial available
C13	38.065066 -80.074049	100/100	Wireline/wireless, aerial available
C14	38.064947 -80.074232	100/100	Wireline/wireless, aerial available
C15	38.064687 -80.074518	100/100	Wireline/wireless, aerial available
C16	38.064423 -80.074902	100/100	Wireline/wireless, aerial available
C17	38.064426 -80.074627	100/100	Wireline/wireless, aerial available
C18	38.064847 -80.074001	100/100	Wireline/wireless, aerial available
C19	38.064657 -80.073406	100/100	Wireline/wireless, aerial available
C20	38.070162 -80.071586	100/100	Wireline/wireless, aerial available
C21		100/100	Wireline/wireless, aerial available
C22		100/100	Wireline/wireless, aerial available
C23		100/100	Wireline/wireless, aerial available
C24		100/100	Wireline/wireless, aerial available
C25		100/100	Wireline/wireless, aerial available
C26		100/100	Wireline/wireless, aerial available
C27		100/100	Wireline/wireless, aerial available
C28		100/100	Wireline/wireless, aerial available
C29		100/100	Wireline/wireless, aerial available
C30		100/100	Wireline/wireless, aerial available
C31		100/100	Wireline/wireless, aerial available
C32		100/100	Wireline/wireless, aerial available
C33		100/100	Wireline/wireless, aerial available
C34		100/100	Wireline/wireless, aerial available
- Campgrounds	2 campgrounds		
Beaver Creek	38 slots	100/100	Wireline/wireless
Coordinates	38.060540 -80.053715		
Electrical Service	Electrical service in 28 slots		Underground
Shower Facilities			
Check-in Station		100/100	Wireline/wireless, aerial available
Riverside	50 slots	100/100	Wireline/wireless

Attachment 1 – Watoga State Park – Priority #1

Electrical Service	Electrical Service in 50 slots		Underground
Coordinates	38.065389 -80.103898		
Shower Facilities	38.063755 -80.103625		
Check-in Station	38.064101 -80.104055	100/100	Wireline/wireless
Trails			
Arrowhead	1.00 Miles	25/3	Wireless
Bearpen	3.00 Miles	25/3	Wireless
Brook Memorial Arboretum	4.50 Miles	25/3	Wireless
Buck and Doe	.75 Miles	25/3	Wireless
Burnside Ridge	3.00 Miles	25/3	Wireless
Honeymoon	2.00 Miles	25/3	Wireless
Jesse's Cove	2.50 Miles	25/3	Wireless
Kennison Run	3.50 Miles	25/3	Wireless
Lake	1.50 Miles	25/3	Wireless
Monongaseneka	2.50 Miles	25/3	Wireless
North Boundary	2.00 Miles	25/3	Wireless
Pine Run	.75 Miles	25/3	Wireless
T.M. Cheek	.50 Miles	25/3	Wireless
Ten Acre	.50 Miles	25/3	Wireless
South Burnside	1.00 Miles	25/3	Wireless

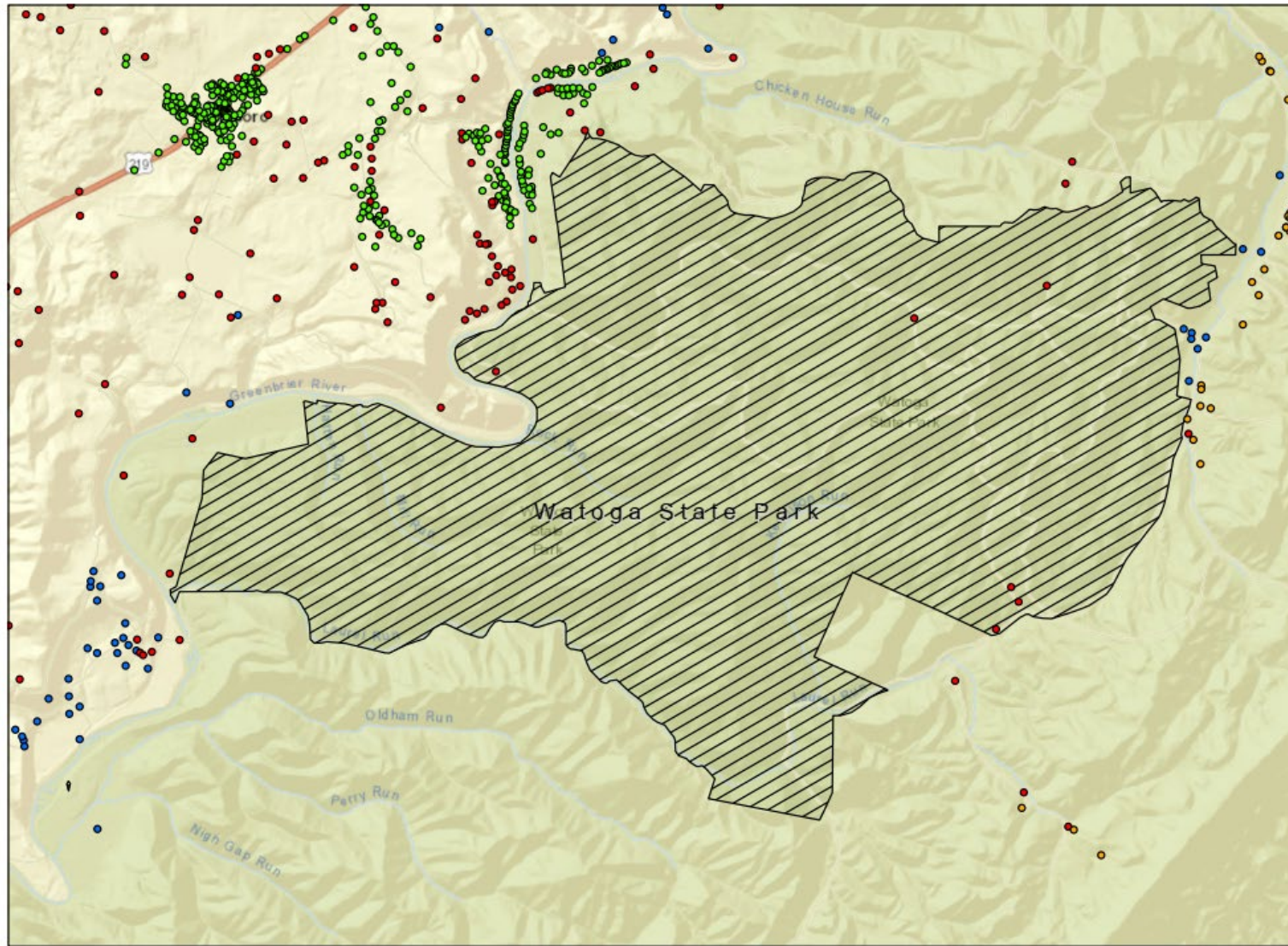
Watoga State Park Details

Attachment 1 – Watoga State Park – Priority #1



Watoga State Park Map

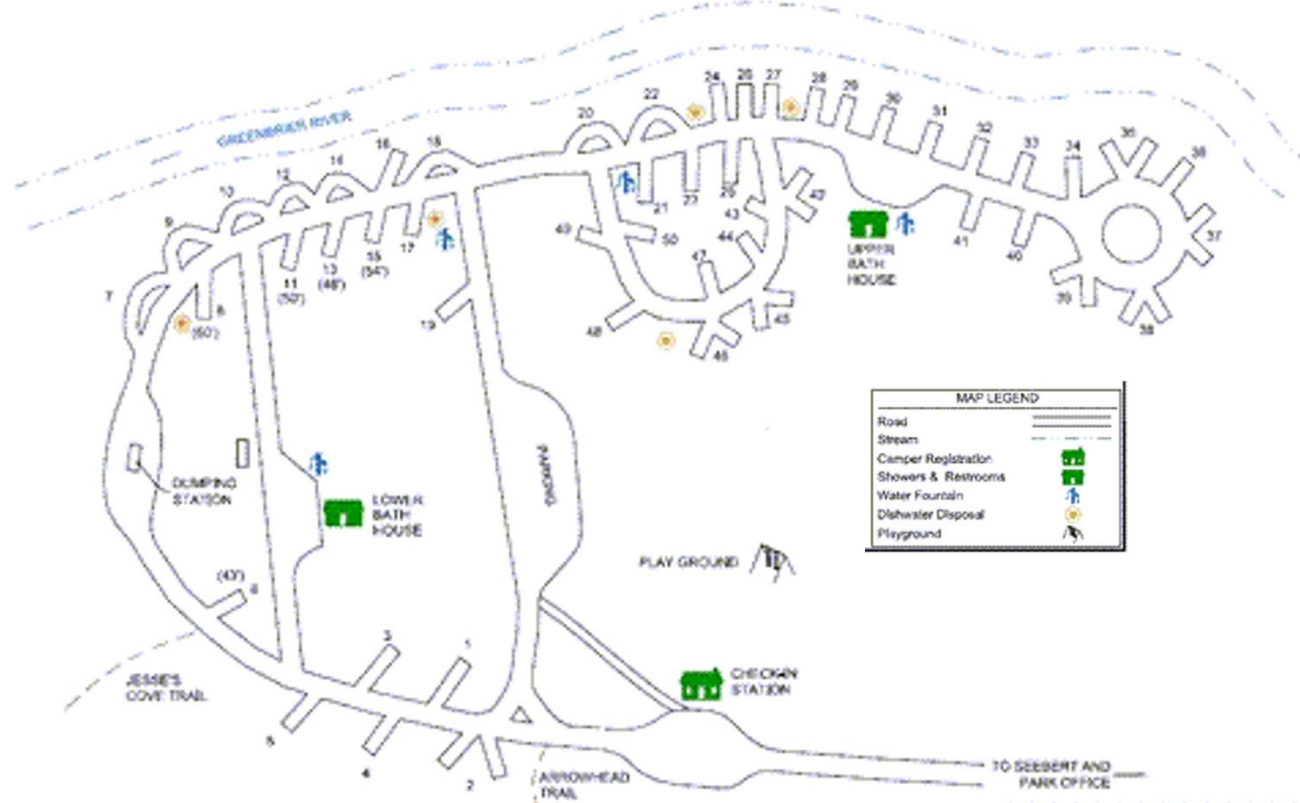
Attachment 1 – Watoga State Park – Priority #1



Watoga State Park
Address Classifications

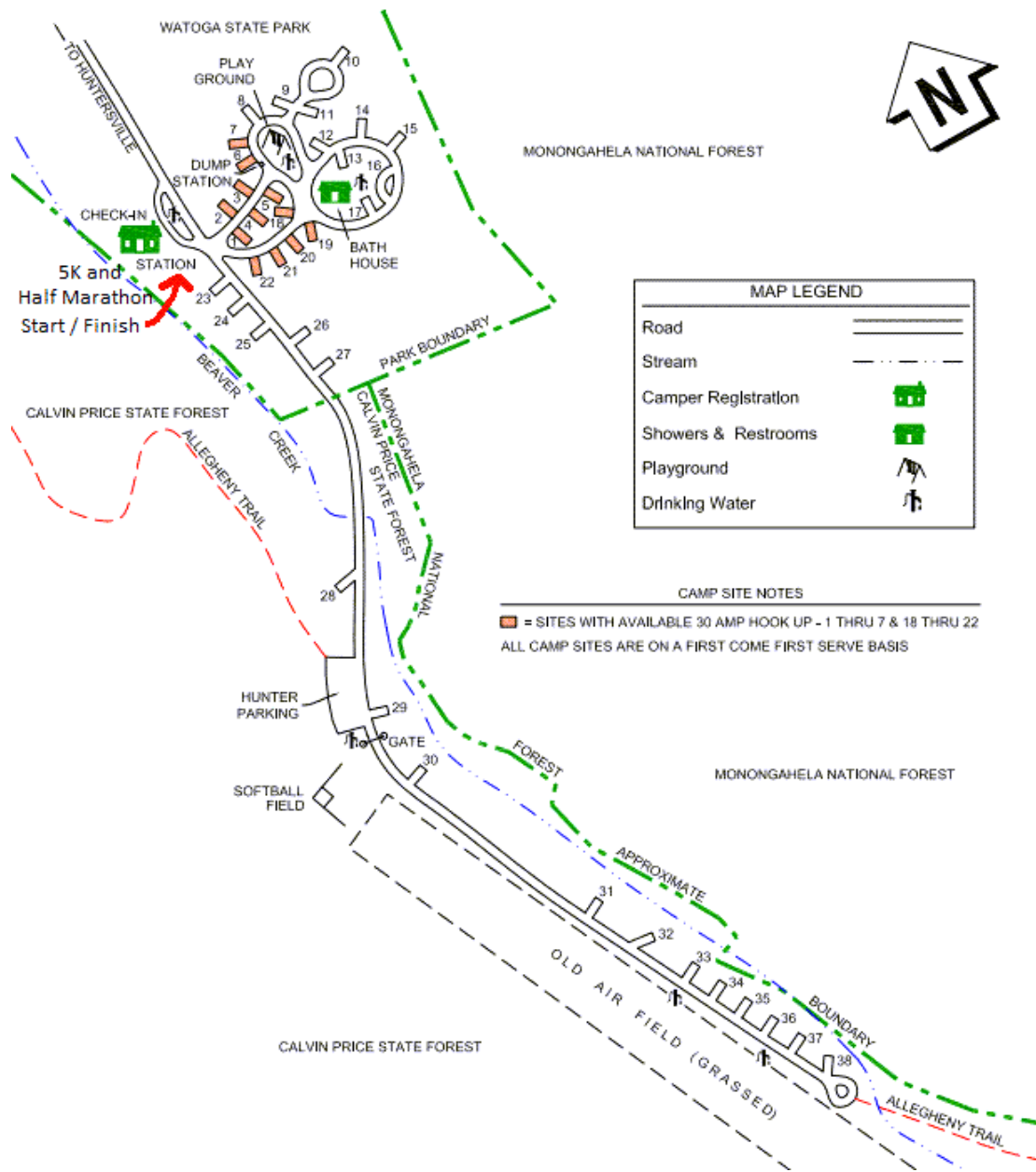
● Targeted ● Other ● Funded, RDOF - CityNet ● Funded, RDOF - Frontier

Watoga State Park Address Classification Map



Watoga State Park - Riverside Campgrounds Map

Attachment 1 – Watoga State Park – Priority #1



Watoga State Park – Beaver Creek Campgrounds Map

Attachment 2

Beech Fork State Park

Priority #2

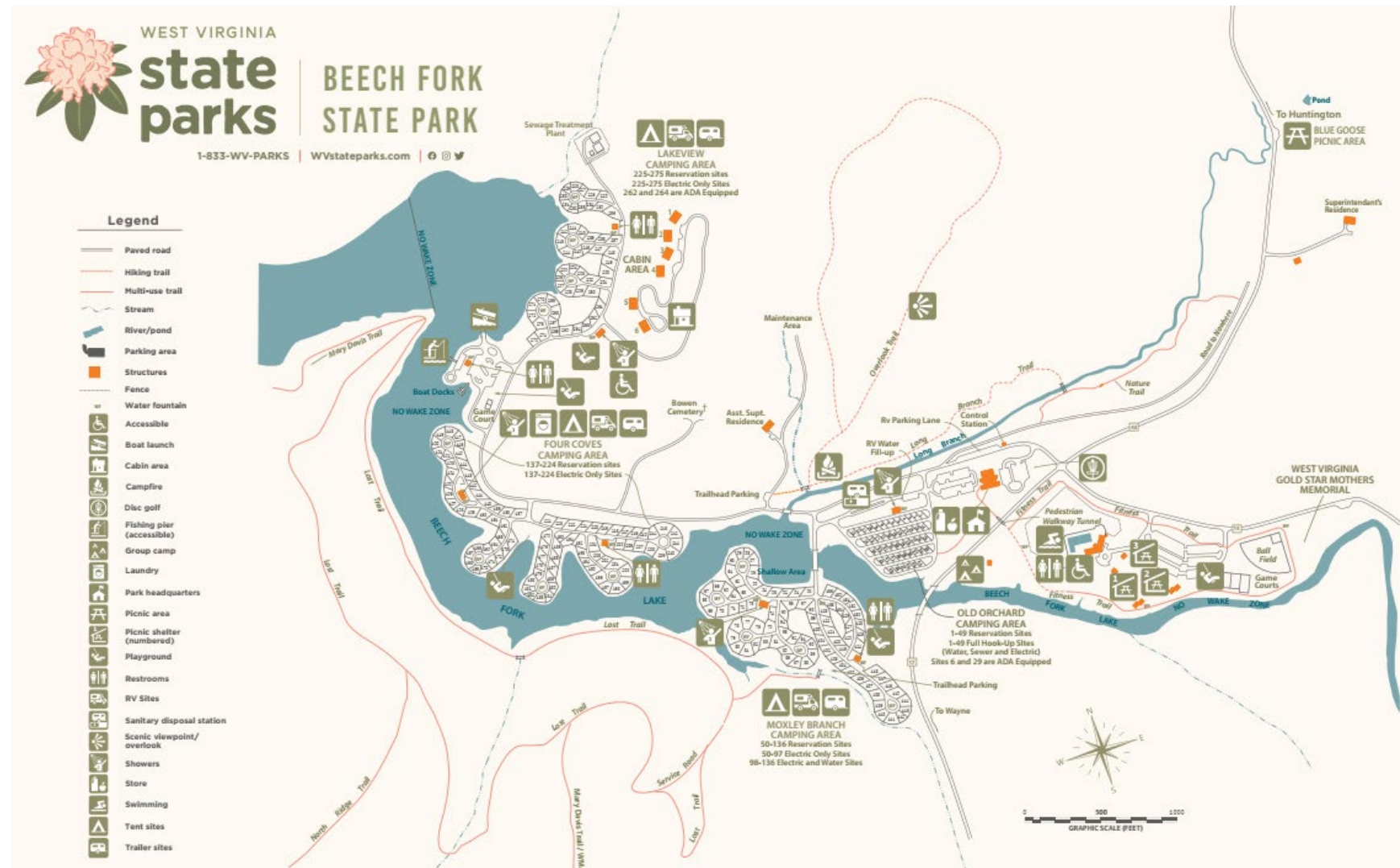
Attachment 2 – Beech Fork State Park – Priority #2

		Bandwidth Needs	Potential delivery method
Priority	2		
County	Cabell		
Park Name	Beech Fork State Park		
City	Barboursville		
SqMi			
Acres	3,144.00 Acres		
Roads			
	Highway 43		
Facilities			
- Access Control Station	38.183091 -82.204552	100/100	Wireline/Wireless, aerial available
- Headquarters	38.182908 -82.204728	1G/1G	Wireline/Wireless, aerial available
- Maintenance Facility	38.184006 -82.210153	100/100	Wireline/Wireless, aerial available
- Superintendent House	38.184308 -82.201431	100/100	Wireline/Wireless, aerial available
- Assistant Superintendent House	38.183394 -82.210523	100/100	Wireline/Wireless, aerial available
- Swimming Pool	38.182327 -82.203871	100/100	Wireless
- Tennis & Basketball Courts	38.182005 -82.202743	100/100	Wireless
Ball Park	38.182253 -82.202052	100/100	Wireless
- Cabins			
C1	38.184801 -82.211079	100/100	Wireless
C2	38.184692 -82.211158	100/100	Wireless
C3	38.184579 -82.211193	100/100	Wireless
C4	38.184471 -82.211250	100/100	Wireless
C5	38.184298 -82.211526	100/100	Wireless
C6	38.184147 -82.211467	100/100	Wireless
- Campgrounds			
Old Orchard	49 slots	100/100	Wireless
Coordinates	38.182605 -82.205593		
Electrical Service	Electrical service in 49 slots		Underground

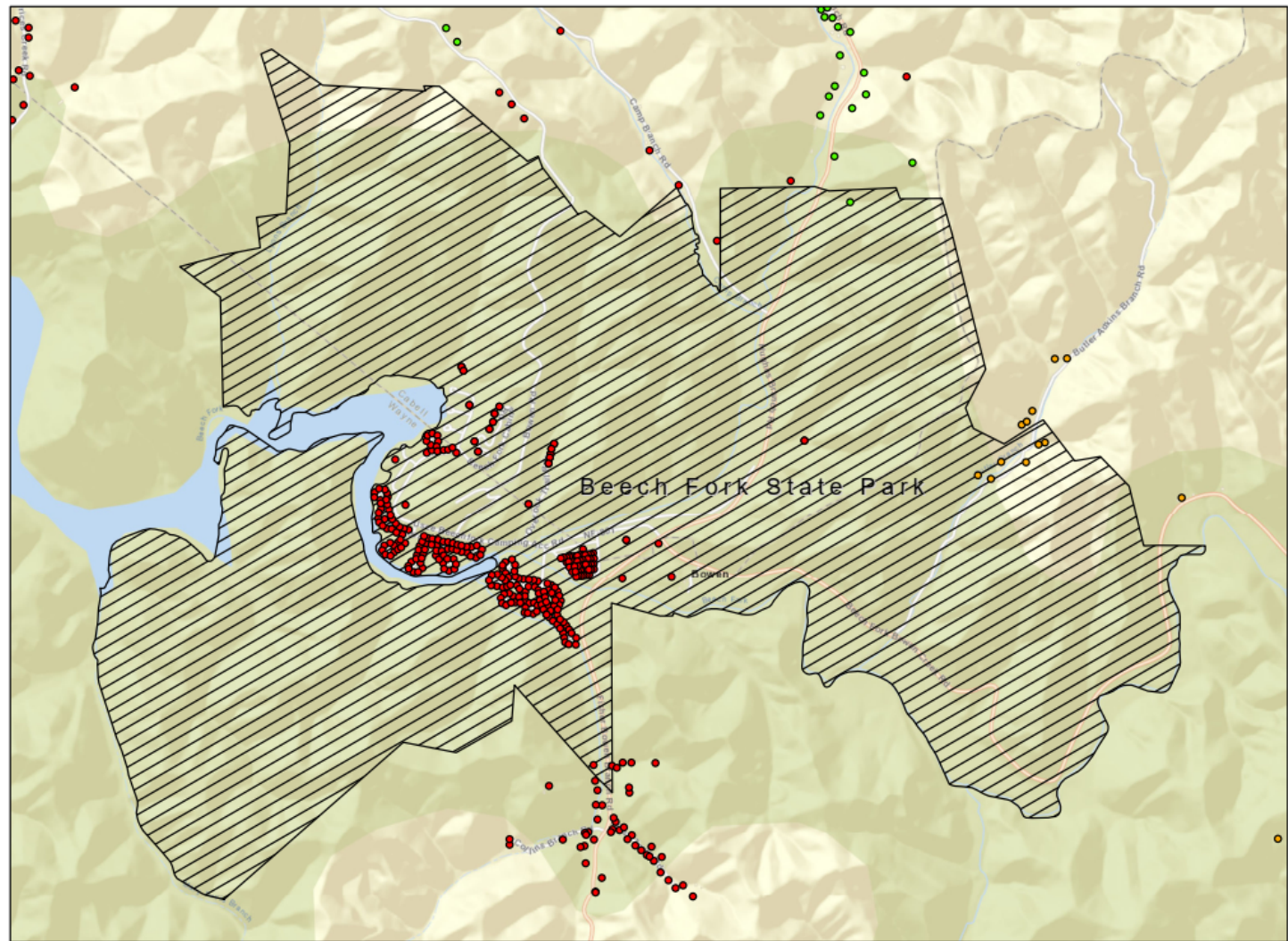
Attachment 2 – Beech Fork State Park – Priority #2

Shower Facilities	38.182737 -82.205549		
Moxley Branch	86 slots	100/100	Wireless
Electrical Service	Electrical service in 86 slots		Underground
Coordinates	38.182084 -82.210461		
Toilet Facilities	38.181780 -82.210000		
Shower Facilities	38.182211 -82.210742		
Four Coves	88 Slots	100/100	Wireless
Electrical Service	Electrical service in 88 slots		Underground
Coordinates	38.182979 -82.212652		
Toilet Facilities	38.182739 -82.212023		
Shower Facilities	38.183175 -82.213184		
Lakeview	51 slots	100/100	Wireless
Electrical Service	Electrical service in 51 slots		Underground
Coordinates	38.184212 -82.211845		
Toilet Facilities #1	38.183965 -82.213048		
Toilet Facilities #2	38.184831 -82.211623		
Shower Facilities	38.184134 -82.211868		
Trails			
Coal Mine	.60 Miles	25/3	Wireless
Long Branch	.50 Miles	25/3	Wireless
Lost	3.50 Miles	25/3	Wireless
Mary Davis	5.00 Miles	25/3	Wireless
Nature	.80 Miles	25/3	Wireless
North Ridge	.75 Miles	25/3	Wireless
Overlook	2.00 Miles	25/3	Wireless
Physical Fitness	1.00 Miles	25/3	Wireless

Beech Fork State Park Details



Beech Fork State Park Map



Beech Fork State Park
Address Classifications

• Targeted • Other • Funded, RDOF - Frontier

Beech Fork State Park - Address Classifications Map

Attachment 3

Blackwater Falls State Park

Priority #3

Attachment 3 – Blackwater Falls State Park – Priority #3

		Bandwidth Needs	Potential delivery method
Priority	3		
County	Tucker		
Park Name	Blackwater Falls North Side		
City	Davis		
SqMi			
Acres	446.00 Acres		
Roads			
	Highway 29		
	Highway 29/1		
Facilities			
- Headquarters	39.072026 -79.285493	1G/1G	Wireline/Wireless, aerial available
- Maintenance Facility	39.064853 -79.284226	100/100	Aerial Fiber present
- Superintendent House	39.070023 -79.285707	100/100	Wireline/Wireless, Aerial and UG
- Assistant Superintendent House	39.070727 -79.291000	100/100	Wireline/Wireless, aerial available
- Lodge	39.062923 -79.295201	200/200	Fiber present, bandwidth present
- Supply Building	39.062364 -79.294822	100/100	Wireline/Wireless, aerial available
- Cross County Ski	39.062132 -79.304534	100/100	Fiber present, bandwidth present
- Tennis & Basketball Courts	39.070249 -79.294234	100/100	Wireline/Wireless, underground only
- Nature Center	39.065925 -79.294360	100/100	Wireline/Wireless, underground only
- Cabins			
Southside			
C1	39.061688 -79.302824	100/100	Wireline/Wireless, Aerial - fiber presence
C2	39.061649 -79.302625	100/100	Wireline/Wireless, Aerial - fiber presence
C3	39.061912 -79.302532	100/100	Wireline/Wireless, Aerial - fiber presence
C4	39.061794 -79.302164	100/100	Wireline/Wireless, Aerial - fiber presence
C5	39.061482 -79.302033	100/100	Wireline/Wireless, Aerial - fiber presence
C6	39.061390 -79.302346	100/100	Wireline/Wireless, Aerial - fiber presence

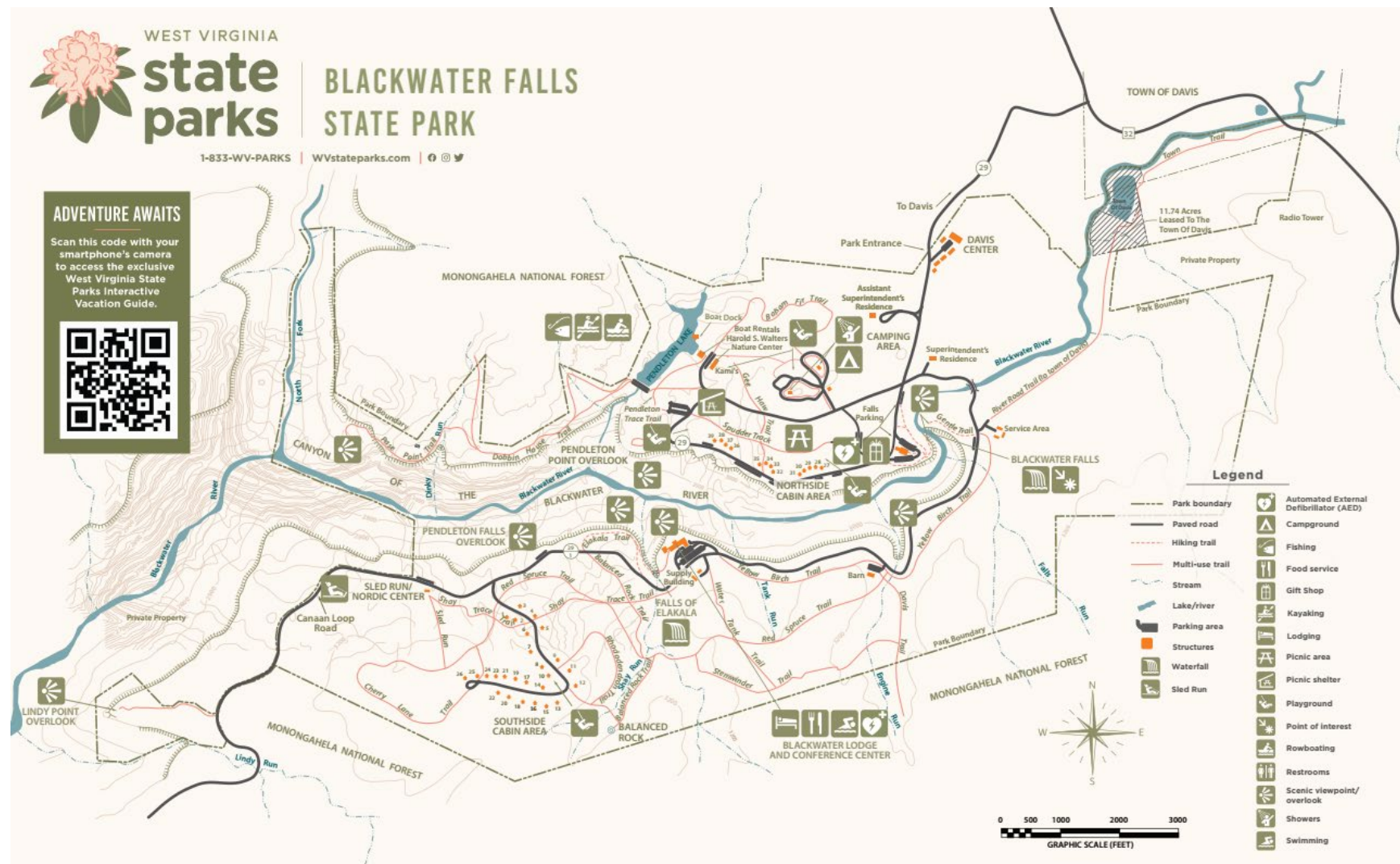
Attachment 3 – Blackwater Falls State Park – Priority #3

C7	39.061114 -79.302320	100/100	Wireline/Wireless, Aerial - fiber presence
C8	39.060823 -79.302069	100/100	Wireline/Wireless, Aerial - fiber presence
C9	39.060976 -79.301699	100/100	Wireline/Wireless, Aerial - fiber presence
C10	39.060689 -79.301892	100/100	Wireline/Wireless, Aerial - fiber presence
C11	39.060779 -79.301450	100/100	Wireline/Wireless, Aerial - fiber presence
C12	39.060528 -79.301325	100/100	Wireline/Wireless, Aerial - fiber presence
C13	39.060262 -79.301710	100/100	Wireline/Wireless, Aerial - fiber presence
C14	39.060486 -79.302009	100/100	Wireline/Wireless, Aerial - fiber presence
C15	39.060202 -79.301967	100/100	Wireline/Wireless, Aerial - fiber presence
C16	39.060230 -79.302203	100/100	Wireline/Wireless, Aerial - fiber presence
C17	39.060587 -79.302344	100/100	Wireline/Wireless, Aerial - fiber presence
C18	39.060271 -79.302456	100/100	Wireline/Wireless, Aerial - fiber presence
C19	39.060637 -79.302603	100/100	Wireline/Wireless, Aerial - fiber presence
C20	39.060343 -79.302768	100/100	Wireline/Wireless, Aerial - fiber presence
C21	39.060680 -79.302826	100/100	Wireline/Wireless, Aerial - fiber presence
C22	39.060436 -79.302994	100/100	Wireline/Wireless, Aerial - fiber presence
C23	39.060700 -79.303046	100/100	Wireline/Wireless, Aerial - fiber presence
C24	39.060700 -79.303199	100/100	Wireline/Wireless, Aerial - fiber presence
C25	39.060705 -79.303454	100/100	Wireline/Wireless, Aerial - fiber presence
C26	39.060659 -79.303638	100/100	Wireline/Wireless, Aerial - fiber presence
Northside			
C27	39.064174 -79.292259	100/100	Wireline/Wireless, underground only
C28	39.064222 -79.292359	100/100	Wireline/Wireless, underground only
C29	39.064225 -79.292477	100/100	Wireline/Wireless, underground only
C30	39.064173 -79.292574	100/100	Wireline/Wireless, underground only
C31	39.064090 -79.292619	100/100	Wireline/Wireless, underground only
C32	39.064160 -79.293153	100/100	Wireline/Wireless, underground only
C33	39.064254 -79.293206	100/100	Wireline/Wireless, underground only
C34	39.064296 -79.293322	100/100	Wireline/Wireless, underground only
C35	39.064288 -79.293451	100/100	Wireline/Wireless, underground only

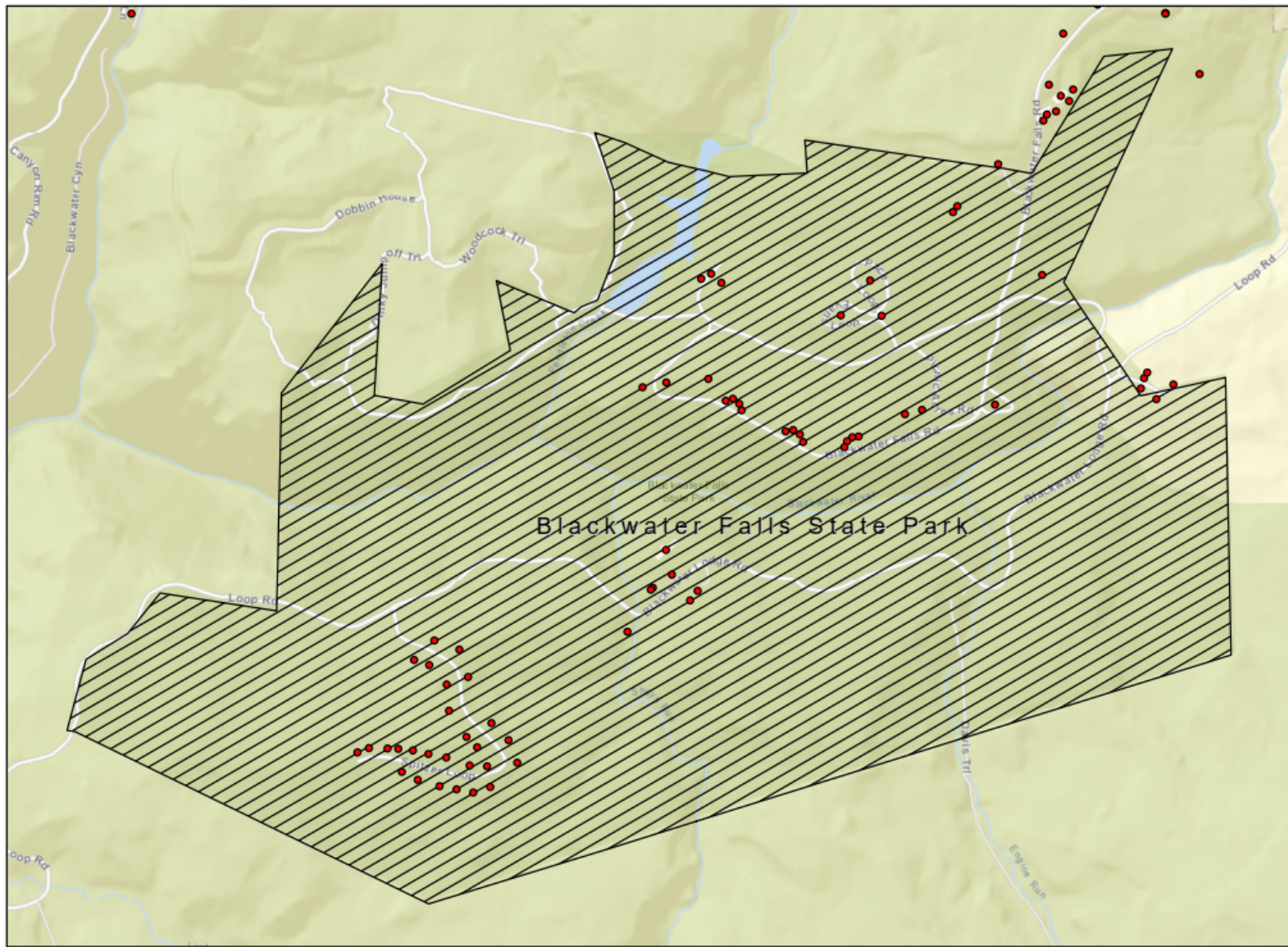
Attachment 3 – Blackwater Falls State Park – Priority #3

C36	39.064507 -79.294046	100/100	Wireline/Wireless, underground only
C37	39.064595 -79.294093	100/100	Wireline/Wireless, underground only
C38	39.064645 -79.294188	100/100	Wireline/Wireless, underground only
C39	39.064627 -79.294305	100/100	Wireline/Wireless, underground only
- Campgrounds			
Blackwater Falls	65 slots		
Coordinates	39.065505 -79.292080	100/100	Wireline/Wireless, underground only
Electrical Service	Electrical service in 65 slots		Mixture of aerial and underground
Shower 1	39.065563 -79.292636		
Shower 2	39.065563 -79.292636		
Trails	N/A		

Blackwater Falls State Park Details



Blackwater Falls State Park Map



Blackwater Falls State Park
Address Classifications

• Targeted

Blackwater Falls State Park Address Classifications Map

Attachment 4

Pipestem Resort State Park

Priority #4

Attachment 4 – Pipestem Resort State Park – Priority #4

		Bandwidth Needs	Potential delivery method
Priority	4		
County	Summers		
Park Name	Pipestem Resort		
City	Pipestem		
SqMi	6.58 SqMi		
Acres	4,209.00 Acres		
Roads			
	Highway 18/2		
	Pipestem Drive		
Facilities			
- Headquarters	37.315737 -80.593747	1G/1G	Wireline/Wireless
- Maintenance Facility	37.311559 -80.591732	100/100	Wireline/Wireless
- Superintendent House	37.310873 -80.584136	100/100	Wireline/Wireless, aerial available
- Assistant Superintendent House	37.323801 -80.582325	100/100	Wireline/Wireless
- Lodge Coordinator Residence	37.323615 -80.582079	100/100	Wireline/Wireless
- Ranger Residence	37.312999 -80.584759	100/100	Wireline/Wireless
- McKeever Lodge	37.323096 -80.585813	1G/1G	Wireline/Wireless
- Golf Course Club House	37.323718 -80.585179	100/100	Wireline/Wireless
- Golf Course Maintenance Facility	37.323238 -80.583593	100/100	Wireline/Wireless, aerial available
- Tennis & Basketball Courts	37.324038 -80.585641	100/100	Wireline/Wireless
- Splash Park	37.322590 -80.585893	100/100	Wireline/Wireless
- Amphitheater	37.315244 -80.594475	100/100	Wireline/Wireless
- Disc & Miniature Golf Courses	37.314688 -80.594784	100/100	Wireline/Wireless
- Canyon Rim Center	37.320328 -80.595618	1G/1G	Fiber present, no requirements
ZipLine/Aerial Tram	Service from Canyon Rim Center		
- Mountain Creek Lodge	37.321629 -80.003208	1G/1G	Wireline, aerial available
- Nature Center	37.313113 -80.592281	100/100	Wireline/Wireless
- Horse Stables	37.311573 -80.590718	100/100	Wireline/Wireless

Attachment 4 – Pipestem Resort State Park – Priority #4

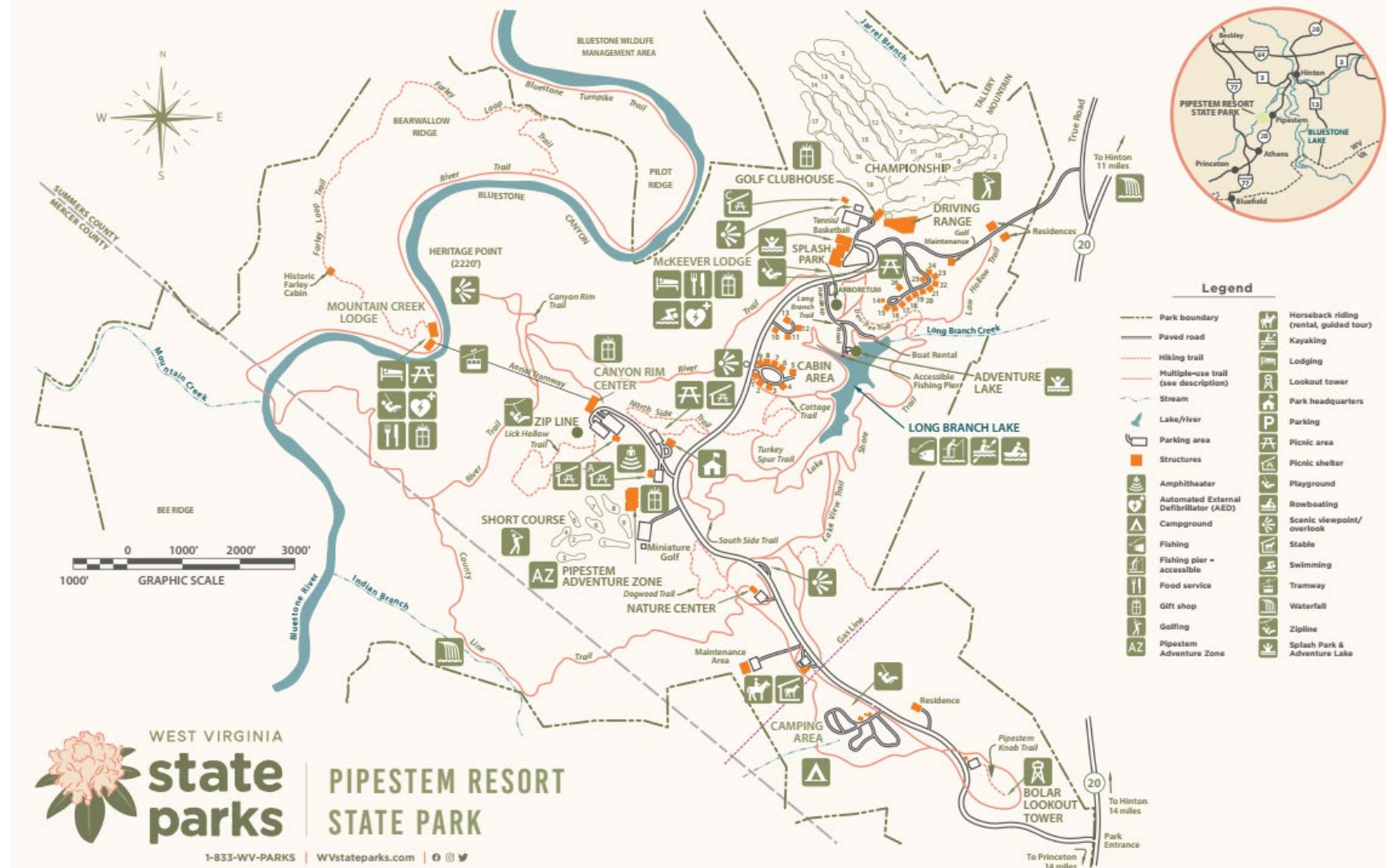
- Lookout Tower	37.305200 -80.582149	100/100	Wireline/Wireless
- Cabins			
C1	37.321070 -80.591796	50/30 (existing)	Coaxial Underground, aerial available
C2	37.320969 -80.591622	50/30 (existing)	Coaxial Underground, aerial available
C3	37.320868 -80.591469	50/30 (existing)	Coaxial Underground, aerial available
C4	37.320885 -80.591277	50/30 (existing)	Coaxial Underground, aerial available
C5	37.320966 -80.591114	50/30 (existing)	Coaxial Underground, aerial available
C6	37.321023 -80.591288	50/30 (existing)	Coaxial Underground, aerial available
C7	37.321156 -80.591497	50/30 (existing)	Coaxial Underground, aerial available
C8	37.321227 -80.591691	50/30 (existing)	Coaxial Underground, aerial available
C9	37.321269 -80.591848	50/30 (existing)	Coaxial Underground, aerial available
C10	37.321950 -80.591332	50/30 (existing)	Coaxial Underground, aerial available
C11	37.321856 -80.591169	50/30 (existing)	Coaxial Underground, aerial available
C12	37.321880 -80.591038	50/30 (existing)	Coaxial Underground, aerial available
C13	37.322051 -80.591102	50/30 (existing)	Coaxial Underground, aerial available
C14	37.322122 -80.585354	50/30 (existing)	Coaxial Underground, aerial available
C15	37.322037 -80.585404	50/30 (existing)	Coaxial Underground, aerial available
C16	37.321944 -80.585337	50/30 (existing)	Coaxial Underground, aerial available
C17	37.321963 -80.585137	50/30 (existing)	Coaxial Underground, aerial available
C18	37.322096 -80.584995	50/30 (existing)	Coaxial Underground, aerial available
C19	37.322172 -80.584809	50/30 (existing)	Coaxial Underground, aerial available
C20	37.322202 -80.584608	50/30 (existing)	Coaxial Underground, aerial available
C21	37.322250 -80.584401	50/30 (existing)	Coaxial Underground, aerial available
C22	37.322335 -80.584214	50/30 (existing)	Coaxial Underground, aerial available
C23	37.322492 -80.584261	50/30 (existing)	Coaxial Underground, aerial available
C24	37.322604 -80.584417	50/30 (existing)	Coaxial Underground, aerial available
C25	37.322393 -80.584451	50/30 (existing)	Coaxial Underground, aerial available
C26	37.322315 -80.584936	50/30 (existing)	Coaxial Underground, aerial available
- Campgrounds	82 slots	100/100	Wireless
Coordinates	37.310681 -80.585605		

Attachment 4 – Pipestem Resort State Park – Priority #4

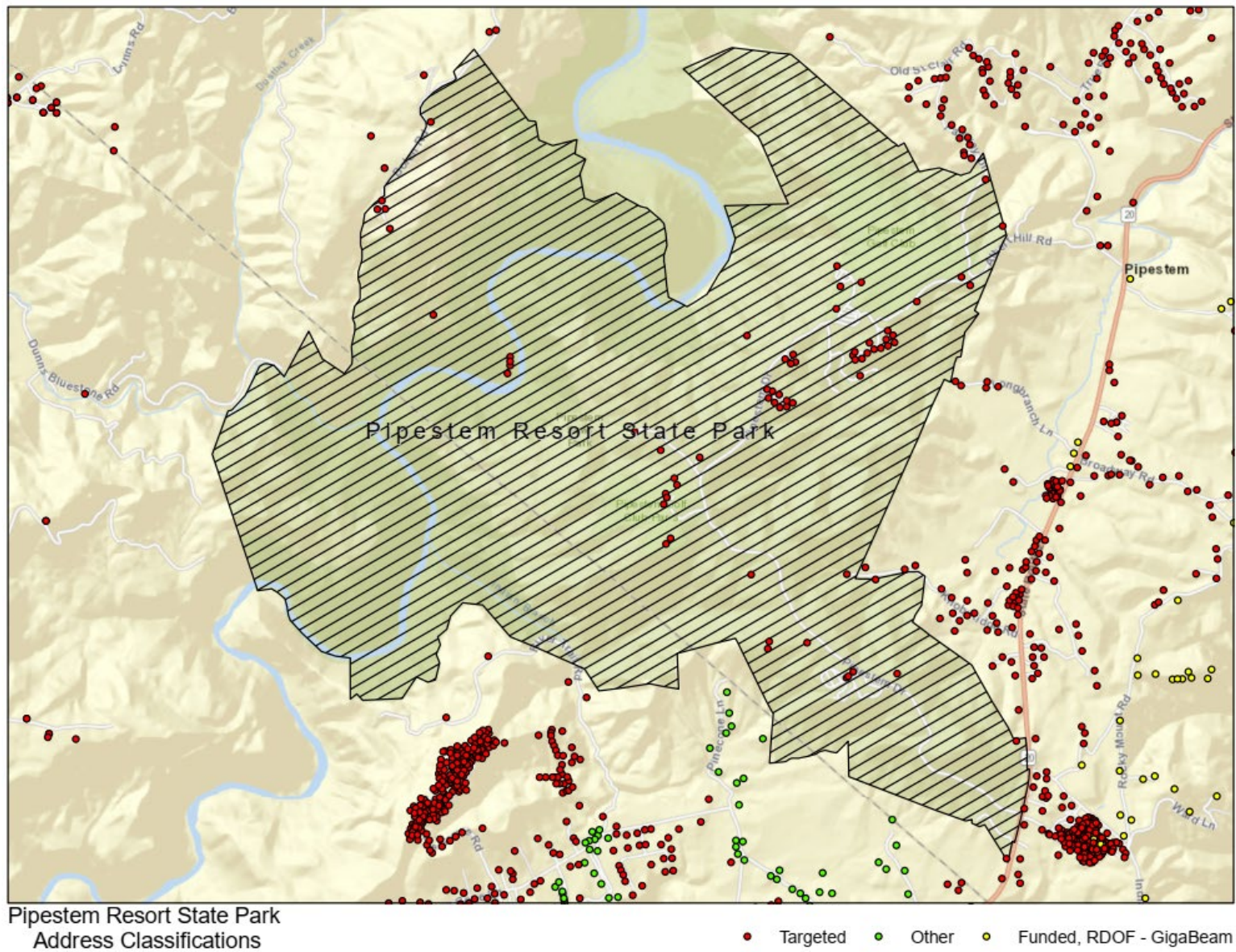
Electrical Service	Electrical service in 82 slots		Underground
Campground Check-in Station	37.310910 -80.585392	100/100	Wireless
Campground Store	37.310783 -80.585587	100/100	Wireless
Shower/Toilet facilities	37.310810 -80.585533		
Trails			
Lake Shore	2.20 Miles	25/3	Wireless
Bluestone Turnpike	8.50 Miles	25/3	Wireless
Canyon Rim	.70 Miles	25/3	Wireless
Cottage	.70 Miles	25/3	Wireless
County Line	1.90 Miles	25/3	Wireless
Dogwood	.60 Miles	25/3	Wireless
Farley Loop	3.00 Miles	25/3	Wireless
Lake View	.40 Miles	25/3	Wireless
Law Hollow	.50 Miles	25/3	Wireless
Lick Hollow	1.60 Miles	25/3	Wireless
Long Branch	.30 Miles	25/3	Wireless
North Side	.30 Miles	25/3	Wireless
Turkey Spur	1.00 Miles	25/3	Wireless
River	5.25 Miles	25/3	Wireless
South Side	.60 Miles	25/3	Wireless

Pipestem Resort State Park Details

Attachment 4 – Pipestem Resort State Park – Priority #4



Pipestem Resort State Park Map



Pipestem Resort State Park Address Classifications

Attachment 5

Bluestone State Park

Priority #5

Attachment 5 – Bluestone State Park – Priority #5

		Bandwidth Needs	Potential delivery method
Priority	5		
County	Summers		
Park Name	Bluestone State Park		
City	Hinton		
SqMi	4.52 SqMi		
Acres	2,890.00 Acres		
Roads			
	Highway 20/2		
Facilities			
- Headquarters	37.365995 -80.555946	1G/1G	Wireline/Wireless, aerial available
- Maintenance Facility	37.365784 -80.561707	100/100	Wireline/Wireless, aerial available
- Superintendent House	37.365988 -80.564749	100/100	Wireline/Wireless, aerial available
- Assistant Superintendent House	37.371551 -80.562033	100/100	Wireline/Wireless, aerial available
- Activities Building	37.371212 -80.562319	1G/1G	Wireline/Wireless, aerial available
- Boat Launch	37.365485 -80.555218	100/100	Wireline/Wireless, aerial available
- Marina	37.363202 -80.550149	100/100	Wireline/Wireless, aerial available
- Cabins			
C1	37.365815 -80.561040	100/100	Wireline/Wireless, aerial available
C2	37.365976 -80.560807	100/100	Wireline/Wireless, aerial available
C3	37.370081 -80.560927	100/100	Wireline/Wireless, aerial available
C4	37.370225 -80.561046	100/100	Wireline/Wireless, aerial available
C5	37.370394 -80.561113	100/100	Wireline/Wireless, aerial available
C6	37.370367 -80.560369	100/100	Wireline/Wireless, aerial available
C7	37.370518 -80.560534	100/100	Wireline/Wireless, aerial available
C8	37.370632 -80.560697	100/100	Wireline/Wireless, aerial available
C9	37.370728 -80.560878	100/100	Wireline/Wireless, aerial available
C10	37.370789 -80.561090	100/100	Wireline/Wireless, aerial available
C11	37.370952 -80.561839	100/100	Wireline/Wireless, aerial available

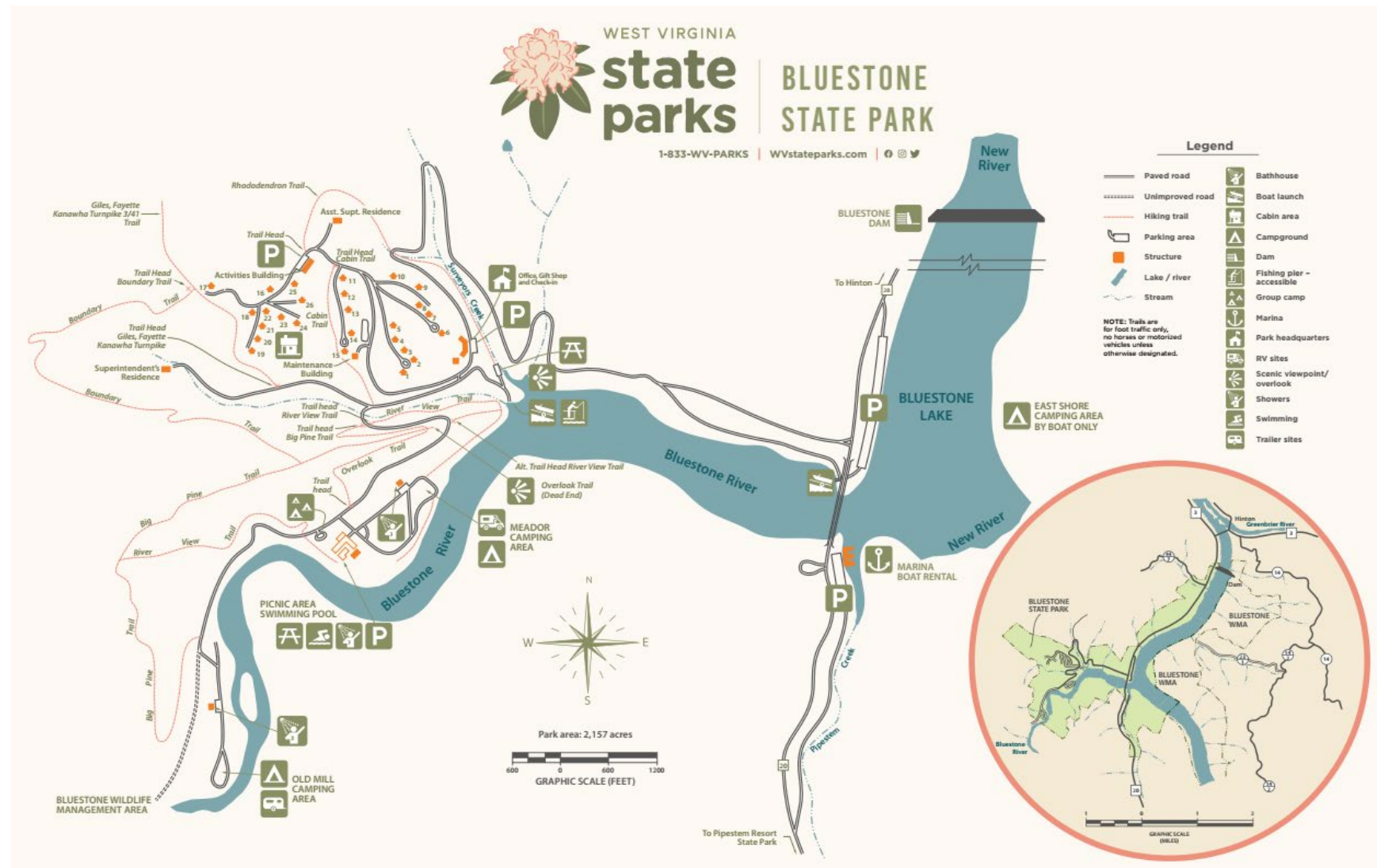
Attachment 5 – Bluestone State Park – Priority #5

C12	37.370771 -80.561858	100/100	Wireline/Wireless, aerial available
C13	37.370606 -80.561825	100/100	Wireline/Wireless, aerial available
C14	37.370363 -80.561812	100/100	Wireline/Wireless, aerial available
C15	37.370204 -80.561818	100/100	Wireline/Wireless, aerial available
C16	37.370822 -80.562921	100/100	Wireline/Wireless, aerial available
C17	37.370717 -80.563338	100/100	Wireline/Wireless, aerial available
C18	37.370540 -80.563219	100/100	Wireline/Wireless, aerial available
C19	37.370110 -80.563267	100/100	Wireline/Wireless, aerial available
C20	37.370254 -80.563195	100/100	Wireline/Wireless, aerial available
C21	37.370395 -80.563114	100/100	Wireline/Wireless, aerial available
C22	37.370577 -80.562999	100/100	Wireline/Wireless, aerial available
C23	37.370525 -80.562790	100/100	Wireline/Wireless, aerial available
C24	37.370465 -80.562615	100/100	Wireline/Wireless, aerial available
C25	37.370690 -80.562676	100/100	Wireline/Wireless, aerial available
- Campgrounds			
Meador	32 sites	100/100	Wireline/Wireless
Coordinates	37.363987 -80.561198		
Electrical Service	Electrical service in 22 slots		Underground
Swimming Pool	37.363660 -80.561835		
Shower/Toilet facilities 1	37.363684 -80.561673		
Shower/Toilet facilities 2	37.364241 -80.561141		
Old Mill	44 sites	100/100	Wireline/Wireless
Coordinates	37.362455 -80.563888		
Electrical Service	No electrical service		
Shower/Toilet facilities	37.361729 -80.563830		
Tent Area	5 sites	100/100	Wireline/Wireless
Coordinates	37.363864 -80.561876		
Electrical Service	No electrical service		
Shower/Toilet facilities	No facilities		
East Shore	39 sites	100/100	Wireline/Wireless

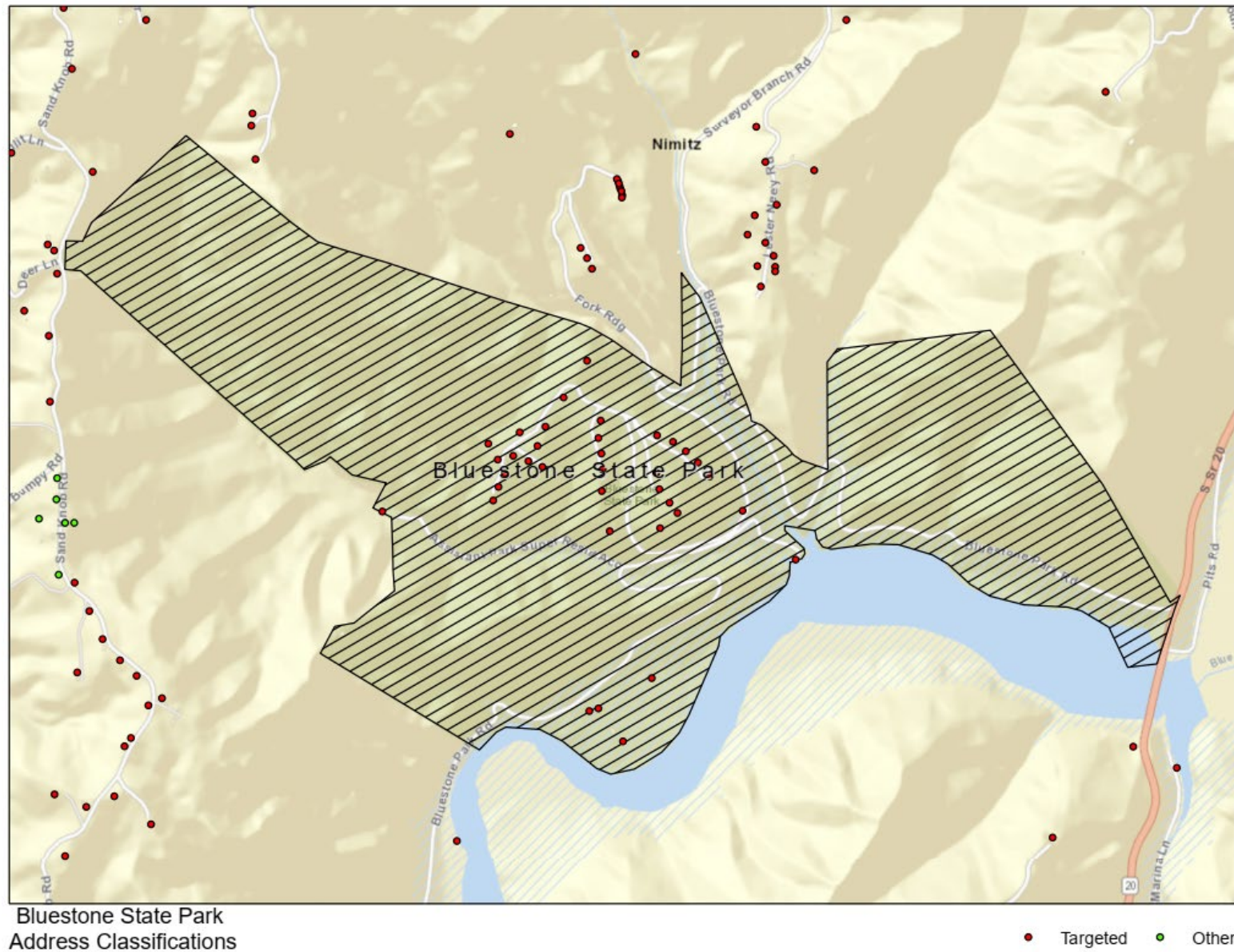
Attachment 5 – Bluestone State Park – Priority #5

Coordinates	37.365041 -80.551205		
Electrical Service	No electrical service		
Shower/Toilet facilities	No facilities		
Trails			
Big Pine	1.70 Miles	25/3	Wireless
Boundary	2.00 Miles	25/3	Wireless
Cabin	.40 Miles	25/3	Wireless
Giles, Fayette, Kanawha	1.00 Miles	25/3	Wireless
Overlook	.50 Miles	25/3	Wireless
Riverview	1.60 Miles	25/3	Wireless
Rhododendron	.80 Miles	25/3	Wireless

Bluestone State Park Details



Bluestone State Park Map



Bluestone State Park Address Classification Map

Attachment 6

Coopers Rock State Park

Priority #6

Attachment 6 – Coopers Rock State Park – Priority #6

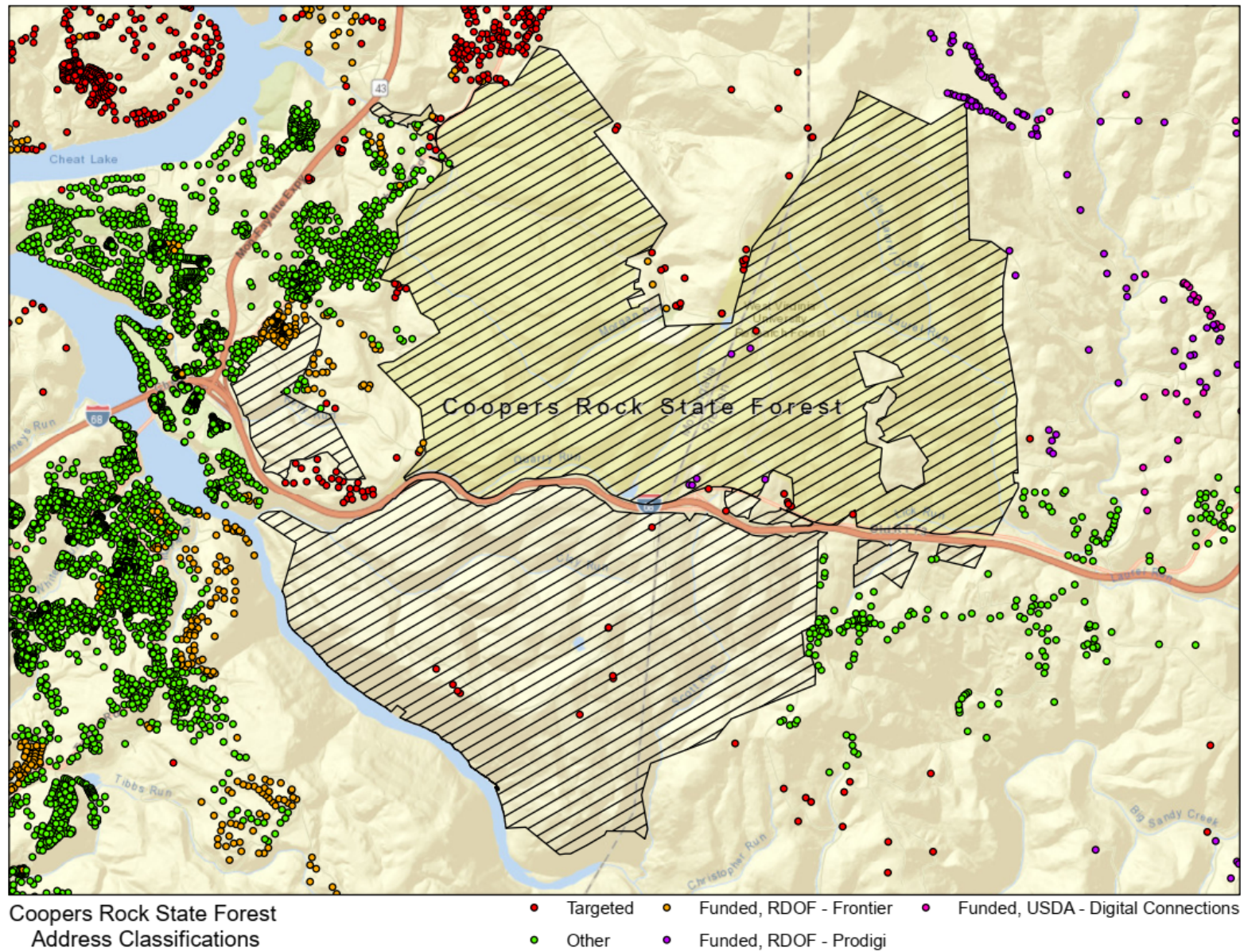
		Bandwidth Needs	Potential delivery method
Priority	6		
County	Monongalia		
Park Name	Coopers Rock State Park		
City	Bruceton Mills		
SqMi	20.70 SqMi		
Acres	13,250.00 Acres		
Roads			
	Interstate 68		
	Highway 73		
	Highway 73/1		
	Highway 73/2		
	Highway 73/12		
	Highway 73/16		
Facilities			
- Headquarters		1G/1G	Wireline
- Maintenance Facility		100/100	Wireline/Wireless
- Superintendent House		100/100	Wireline/Wireless
- Assistant Superintendent House		100/100	Wireline/Wireless
- Gift Shop	39.381704 -79.485691	100/100	Wireline/Wireless
- Cabins	N/A		
- Campgrounds			
McCollum	25 sites	100/100	Wireless
Coordinates	39.382136 -79.472970		
Electrical Service	Electric service at 25 sites		
Shower/Toilet facilities 1	39.382057 -79.473249		
Rhododendron	25 sites	100/100	Wireless
Coordinates	39.382218 -79.485210		
Electrical Service	No electrical services		

Attachment 6 – Coopers Rock State Park – Priority #6

Shower/Toilet facilities	No facilities		
Trails			
Clay Furnace	.80 Miles	25/3	Wireless
Clay Run	1.80 Miles	25/3	Wireless
Darnell Hollow	4.00 Miles	25/3	Wireless
Eagle	.30 Miles	25/3	Wireless
Glade Run	1.50 Miles	25/3	Wireless
Goodspeed Highway	3.00 Miles	25/3	Wireless
Johnson Hollow	3.00 Miles	25/3	Wireless
Ken's Run	4.50 Miles	25/3	Wireless
Lick Run	1.80 Miles	25/3	Wireless
McCollum	1.00 Miles	25/3	Wireless
Mont Chateau	2.60 Miles	25/3	Wireless
Rattlesnake	.70 Miles	25/3	Wireless
Ravens Rock	1.50 Miles	25/3	Wireless
Reservoir Loop	.70 Miles	25/3	Wireless
Rhododendron	1.00 Miles	25/3	Wireless
Ridge	1.50 Miles	25/3	Wireless
Rock City	1.00 Miles	25/3	Wireless
Roadside	3.00 Miles	25/3	Wireless
Scott Run	2.50 Miles	25/3	Wireless
Underlook	.20 Miles	25/3	Wireless
Virgin Hemlock	1.20 Miles	25/3	Wireless
Ski Trails			
Intermediate	.60 Miles	25/3	Wireless
Advanced	2.30 Miles	25/3	Wireless
Reservoir	.80 Miles	25/3	Wireless

Coopers State Park Details

35 | Page



Coopers Rock State Park Address Classifications Map

Attachment 7 Babcock State Park Priority #7

Attachment 7 – Babcock State Park – Priority #7

		Bandwidth Needs	Potential delivery method
Priority	7		
County	Fayette		
Park Name	Babcock State Park		
City	Clifftop		
SqMi	6.37 SqMi		
Acres	4,127.00 Acres		
Roads			
	Highway 11		
	Park Forest 802		
	Park Forest 809		
	Park Forest 808		
	Park Forest 807		
	Park Forest 802		
	Babcock Road		
	Old Sewell Road		
	Park Forest 801		
	Park Forest 805		
Facilities			
- Headquarters & Gift Shop	37.584770 -80.564504	1G/1G	Wireline, aerial available
- Maintenance Facility	37.590185 -80.562091	100/100	Wireline/Wireless, aerial available
- Superintendent House	38.001803 -80.564776	100/100	Wireline/Wireless, aerial available
- Assistant Superintendent House	37.585994 -80.562257	100/100	Wireline/Wireless, aerial available
- Supply	38.001471 -80.565292	100/100	Wireline/Wireless, aerial available
- Swimming Pool	37.584235 -80.571594	100/100	Wireline/Wireless
- Boat Ramp/Dock	37.583833 -80.570765	100/100	Wireline/Wireless
- Boat Dock/Ramp Toilet	37.584203 -80.570923	100/100	Wireline/Wireless
- Cabins			
Cabin Area Toilets	37.594029 -80.572528	100/100	Wireline/Wireless, aerial available

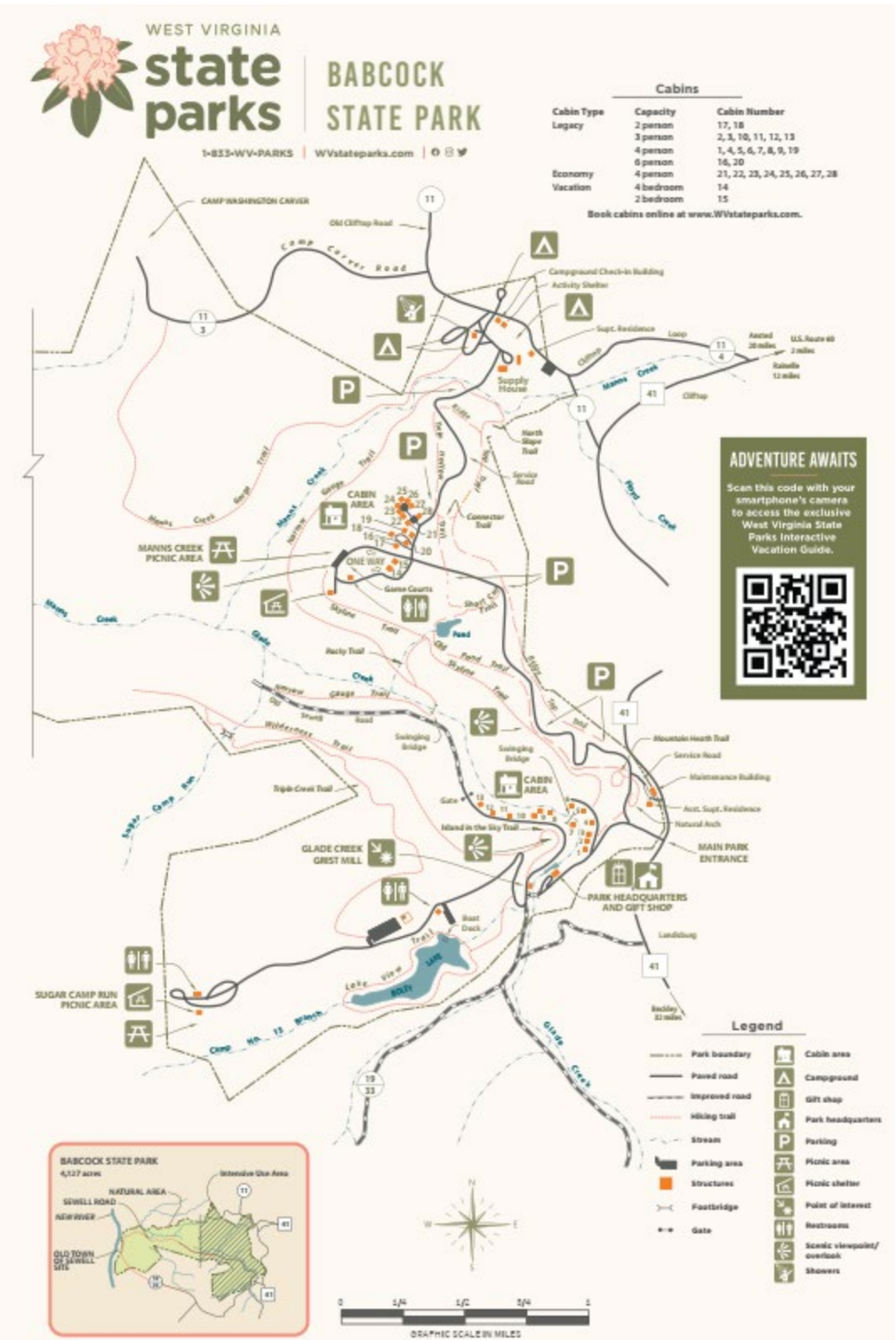
Attachment 7 – Babcock State Park – Priority #7

C1	37.585393 -80.563638	100/100	Wireline/Wireless, aerial available
C2	37.585474 -80.563566	100/100	Wireline/Wireless, aerial available
C3	37.585604 -80.563525	100/100	Wireline/Wireless, aerial available
C4	37.585816 -80.563432	100/100	Wireline/Wireless, aerial available
C5	37.585973 -80.563605	100/100	Wireline/Wireless, aerial available
C6	37.590065 -80.563843	100/100	Wireline/Wireless, aerial available
C7	37.585765 -80.563884	100/100	Wireline/Wireless, aerial available
C8	37.585962 -80.564327	100/100	Wireline/Wireless, aerial available
C9	37.585907 -80.564697	100/100	Wireline/Wireless, aerial available
C10	37.585880 -80.565210	100/100	Wireline/Wireless, aerial available
C11	37.585910 -80.565499	100/100	Wireline/Wireless, aerial available
C12	37.585931 -80.565590	100/100	Wireline/Wireless, aerial available
C13	37.590129 -80.565807	100/100	Wireline/Wireless, aerial available
C14	37.594183 -80.571717	100/100	Wireline/Wireless, aerial available
C15	37.594333 -80.571756	100/100	Wireline/Wireless, aerial available
C16	37.594583 -80.571543	100/100	Wireline/Wireless, aerial available
C17	37.594668 -80.571686	100/100	Wireline/Wireless, aerial available
C18	37.594814 -80.571755	100/100	Wireline/Wireless, aerial available
C19	37.594744 -80.571484	100/100	Wireline/Wireless, aerial available
C20	37.594618 -80.571413	100/100	Wireline/Wireless, aerial available
C21	37.595065 -80.571386	100/100	Wireline/Wireless, aerial available
C22	37.595117 -80.571440	100/100	Wireline/Wireless, aerial available
C23	37.595159 -80.571492	100/100	Wireline/Wireless, aerial available
C24	37.595194 -80.571585	100/100	Wireline/Wireless, aerial available
C25	37.595297 -80.571612	100/100	Wireline/Wireless, aerial available
C26	37.595290 -80.571531	100/100	Wireline/Wireless, aerial available
C27	37.595255 -80.571492	100/100	Wireline/Wireless, aerial available
C28	37.595100 -80.571296	100/100	Wireline/Wireless, aerial available
- Campgrounds			
Primary Campgrounds	52 sites	100/100	Wireline/Wireless, aerial available

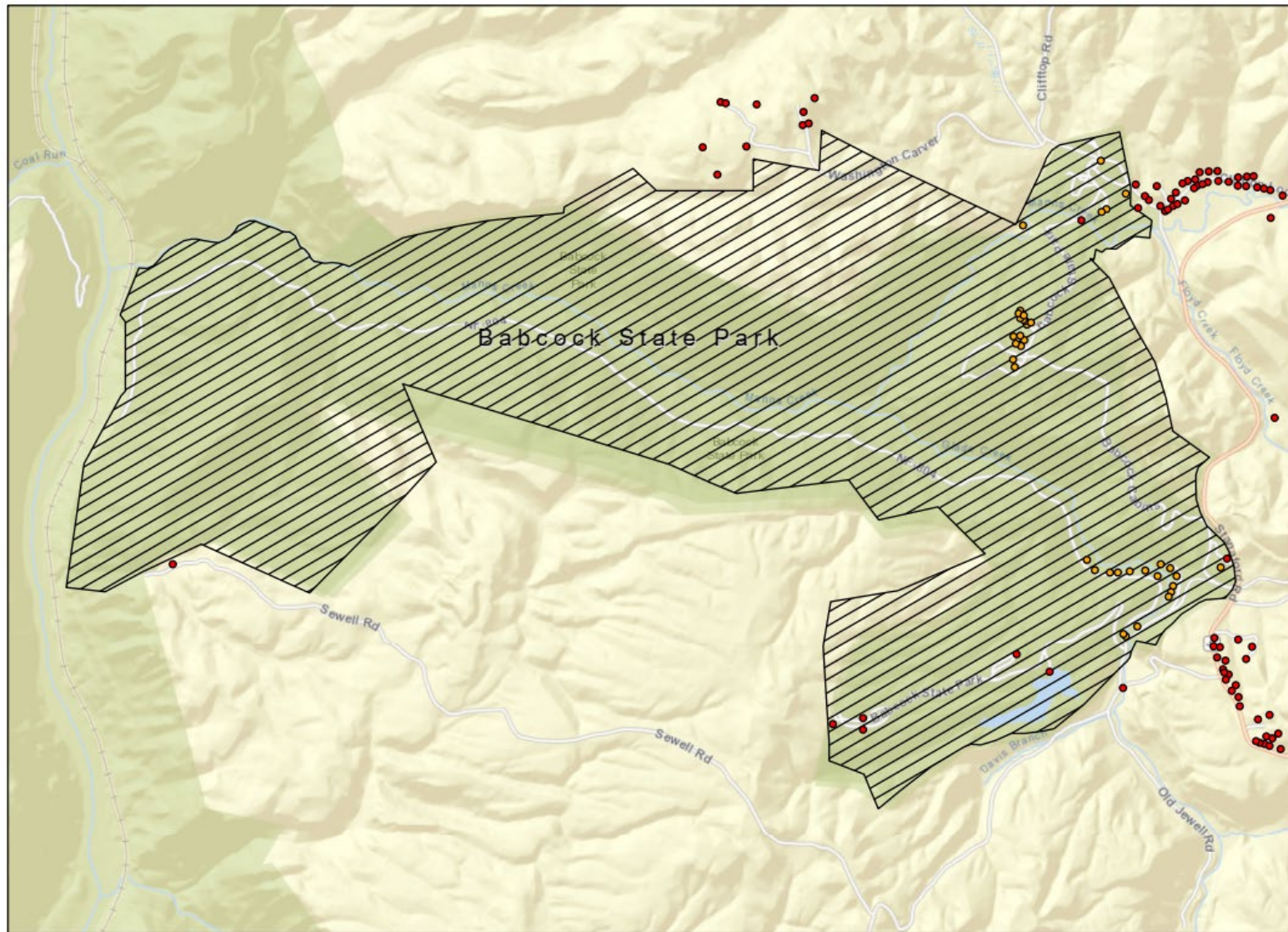
Attachment 7 – Babcock State Park – Priority #7

Coordinates	38.002072 -80.565925		
Electrical Service	Electric service to 28 sites		
Shower/Toilet facilities 1	38.002126 -80.565963		
Tent Campgrounds	38.002886 -80.565729	100/100	Wireline/Wireless
Shower/Toilet facilities	No facilities		
Sugar Camp Run	37.582725 -80.580533	100/100	Wireline/Wireless
Shower/Toilet facilities	37.582804 -80.580064		
Trails			
Connector	.01 Miles	25/3	Wireless
Island In the Sky	.50 Miles	25/3	Wireless
Lake View	1.00 Miles	25/3	Wireless
Manns Creek Gorge	2.00 Miles	25/3	Wireless
Mountain Heath	.25 Miles	25/3	Wireless
Narrow Gauge	2.50 Miles	25/3	Wireless
North Slope	.50 Miles	25/3	Wireless
Old Pond	1.50 Miles	25/3	Wireless
Ridge Top	2.00 Miles	25/3	Wireless
Rocky	.50 Miles	25/3	Wireless
Short Cut	.06 Miles	25/3	Wireless
Skyline	2.00 Miles	25/3	Wireless
Triple Creek	1.00 Miles	25/3	Wireless
Twin Hollow	.50 Miles	25/3	Wireless
Wilderness	1.50 Miles	25/3	Wireless

Babcock State Park Details



Babcock State Park Map



Babcock State Park
Address Classifications

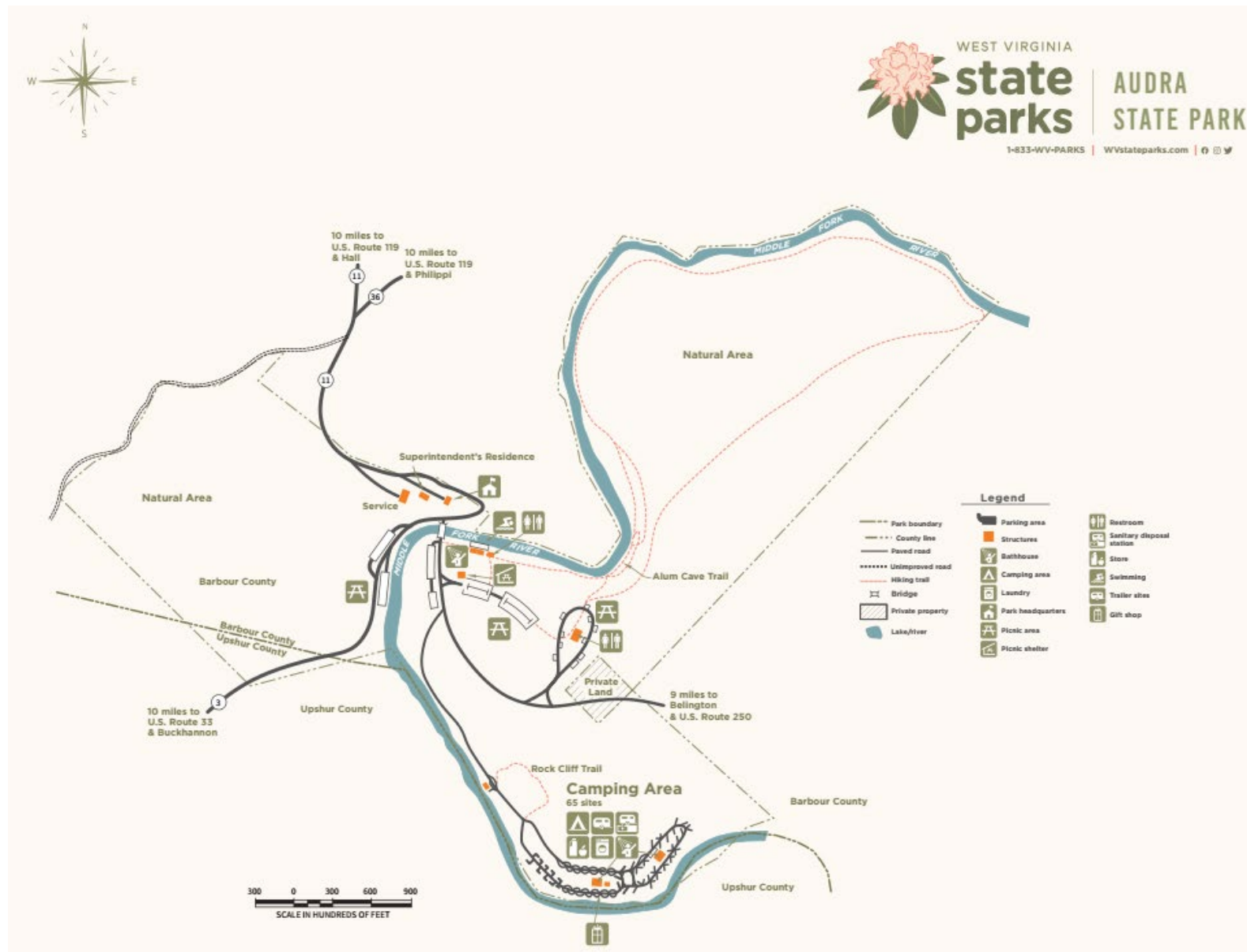
● Targeted ● Funded, RDOF - Frontier

Babcock State Park Address Classifications Map

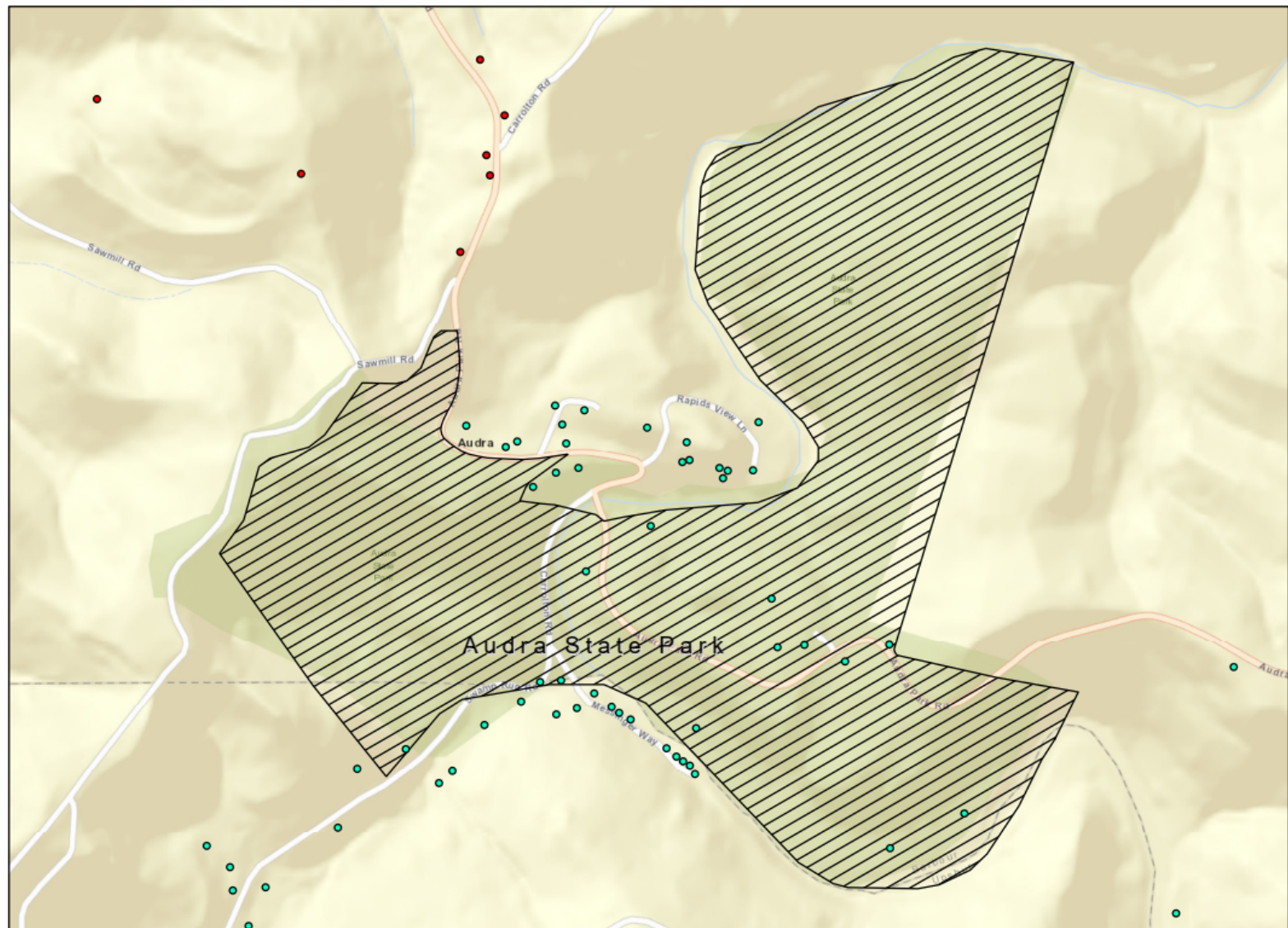
Attachment 8 Audra State Park Priority #8

		Bandwidth Needs	Potential delivery method
Priority	8		
County	Barbour		
Park Name	Audra State Park		
City	Buckhannon		
SqMi			
Acres			
Roads			
	Highway 11		
Facilities			
- Headquarters & Gift Shop	39.023132 -80.040477	1G/1G	Wireline, aerial available
- Maintenance Facility	39.022987 -80.040856	100/100	Wireline/Wireless, aerial available
- Superintendent House	39.023105 -80.040668	100/100	Wireline/Wireless, aerial available
- Picnic Area 1	39.022722 -80.040019	100/100	Wireline/Wireless, aerial available
Shower	39.022737 -80.035871		
Toilet	39.022742 -80.035747		
- Picnic Area 2	39.022337 -80.035849	100/100	Wireline/Wireless, aerial available
Toilet	39.022259 -80.034830		
- Cabins	N/A		
- Campgrounds	67 sites		
Coordinates	39.020557 -80.033892	100/100	Wireline/Wireless, aerial available
Electrical Service	Electric service at 50 sites		Aerial
Shower/Toilet facilities 1	39.020547 -80.033769		
Shower/Toilet facilities 2	39.020822 -80.033169		
Trails			
Alum Creek and Cave	2.70 Miles	25/3	Wireless

Audra State Park Details



Audra State Park Map



Audra State Park
Address Classifications

● Targeted ● Funded, USDA - Central WV Development

Audra State Park Address Classification Map

Attachment 9

Cedar Creek State Park

Priority #9

Attachment 9 – Cedar Creek State Park – Priority #9

		Bandwidth Needs	Potential delivery method
Priority	9		
County	Gilmer		
Park Name	Cedar Creek State Park		
City	Glenville		
SqMi	3.91 SqMi		
Acres	2,588.00 Acres		
Roads			
	Highway 17		
	Highway 17/2		
	Park and Forest Route 803		
	Park and Forest Route 801		
	Park and Forest Route 802		
Facilities			
- Headquarters	38.525737 -80.511980	1G/1G	Wireline, aerial available
- Maintenance Facility	38.524720 -80.514274	100/100	Wireline/Wireless, aerial available
- Paddle Boat Dock	38.525793 -80.511900	100/100	Wireless
- Ball Field	38.525797 -80.512303	100/100	Wireless
- Recreation Building	38.524928 -80.511536	100/100	Wireline/Wireless
- Tennis/Basketball Courts	38.525124 -80.511372	100/100	Wireless
- Swimming Pool	38.524645 -80.511108	100/100	Wireless
- Swimming Pool Showers	38.524712 -80.511169	100/100	Wireless
- Apple Picnic Area	38.524586 -80.511432	100/100	Wireless
- Hickory Picnic Area	38.524485 -80.510459	100/100	Wireless
- Hickory Picnic Area Toilets	38.524359 -80.510337	100/100	Wireless
- Picnic Area	38.523657 -80.510340	100/100	Wireless
- Store and Check-in	38.525245 -80.514010	100/100	Wireless
- Showers/Toilets 1	38.524599 -80.515987	100/100	Wireless
- Toilets & Laundry	38.523572 -80.521486	100/100	Wireless

Attachment 9 – Cedar Creek State Park – Priority #9

- Showers/Toilets 2	38.522678 -80.522324	100/100	Wireless
- Superintendent House	38.525036 -80.514073	100/100	Wireline/Wireless, aerial available
- Assistant Superintendent House	38.525733 -80.513121	100/100	Wireline/Wireless, aerial available
- Cabins	N/A		
- Campgrounds	76 sites		
Coordinates	38.522961 -80.523144	100/100	Wireline/Wireless
Electrical Service	Electric service at 76 sites		
Trails			
Fishermans's	1.50 Miles	25/3	Wireless
Grassy Ridge	.25 Miles	25/3	Wireless
Nightingale	.50 Miles	25/3	Wireless
North Boundary	1.00 Miles	25/3	Wireless
Park View	1.75 Miles	25/3	Wireless
Stone Trough	2.50 Miles	25/3	Wireless
Two Run	2.50 Miles	25/3	Wireless

Cedar Creek State Park Details



Cedar Creek State Park Map



Attachment 10

Little Beaver State Park

Priority #10

Attachment 10 – Little Beaver State Park – Priority #10

		Bandwidth Needs	Potential delivery method
Priority	10		
County	Raleigh		
Park Name	Little Beaver State Park		
City	Beaver		
SqMi	.86 SqMi		
Acres	551.00 Acres		
Roads			
	Highway 307		
	Little Beaver Campground Road		
Facilities			
- Headquarters & Gift Shop	37.451693 -81.044568	1G/1G	Wireline
- Picnic Area	37.451428 -81.043624	100/100	Wireline/Wireless
- Picnic Area Toilets	37.451440 -81.043836		
- Superintendent House	37.451920 -81.044489	100/100	Wireline/Wireless
- Campgrounds Check-in Station	37.450716 -81.043451	100/100	Wireline/Wireless
- Cabins	N/A		
- Campgrounds	46 slots		
Coordinates	37.450524 -81.044203	100/100	Wireline/Wireless
Electrical Service	Electric service at 30 sites		
Shower/Toilet facilities 1	37.450309 -81.043795		
Trails			
Beaver Creek	.70 Miles	25/3	Wireless
Billy Boat's Gruff	.60 Miles	25/3	Wireless
Creek Bed	.40 Miles	25/3	Wireless
Crooked Rock	1.20 Miles	25/3	Wireless
Deer	.80 Miles	25/3	Wireless
Drop Off	.40 Miles	25/3	Wireless
Easy Street	.50 Miles	25/3	Wireless

Attachment 10 – Little Beaver State Park – Priority #10

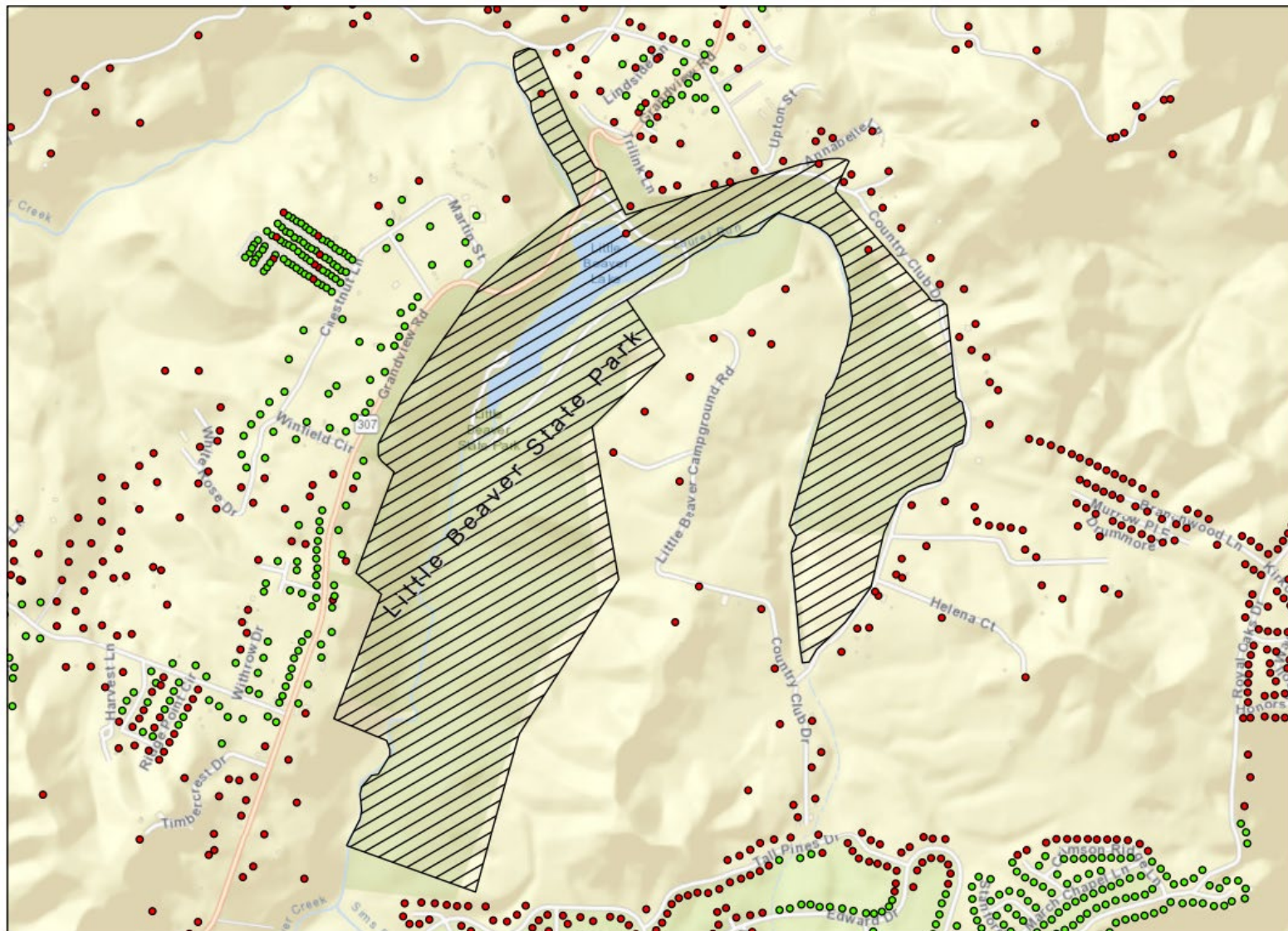
Hemlock	.25 Miles	25/3	Wireless
Laurel Creek	2.60 Miles	25/3	Wireless
Lake Front	1.10 Miles	25/3	Wireless
Nature Ridge	2.20 Miles	25/3	Wireless
Railroad Grade	1.95 Miles	25/3	Wireless
Rhododendron Run	2.50 Miles	25/3	Wireless
Stone Trough	.90 Miles	25/3	Wireless
Toppers Ridge	.70 Miles	25/3	Wireless
Turkey Spur	.50 Miles	25/3	Wireless
Weaver Way	1.50 Miles	25/3	Wireless

Little Beaver State Park Details

Attachment 10 – Little Beaver State Park – Priority #10



Little Beaver State Park Map



Little Beaver State Park
Address Classifications

● Targeted ● Other

Little Beaver State Park Address Classification Map