

# Pendleton

## West Virginia Broadband Unserved and Unfunded Areas

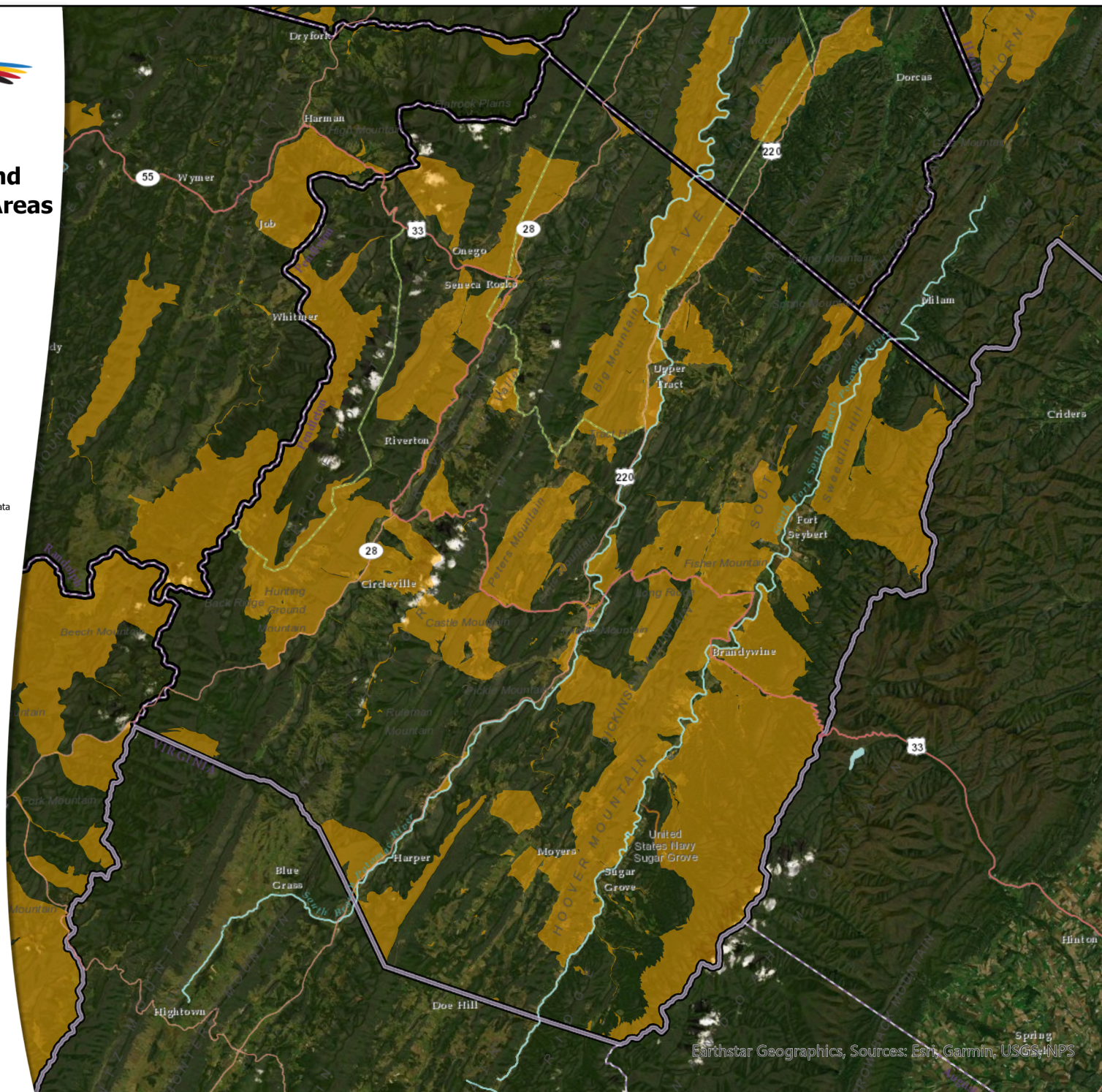
Represented by Census Blocks  
Provided by Ookla speed tests  
(January 2020 - March 2021)

 Unserved & Unfunded

Census block boundaries are dissolved. "Unserved" refers to any area that does not receive 25/3 Mbps. Unserved census blocks were derived from aggregated median values of Ookla speed test data points and overlapping publicly funded areas were removed.



Projection: NAD 1983 UTM Zone 17N  
Jamie Hoffmann, Jamie.H.Hoffmann@wv.gov  
West Virginia Development Office  
West Virginia Office of Broadband  
West Virginia Broadband Enhancement Council  
ESRI, Ookla, FCC Form 477, FCC A-CAM, ARC  
USDA ReConnect, USDA Community Connect, CDBG



Earthstar Geographics, Sources: Esri, Garmin, USGS, NPS