

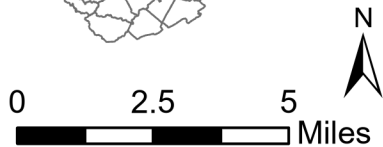
Doddridge

West Virginia Broadband Unserved and Unfunded Areas

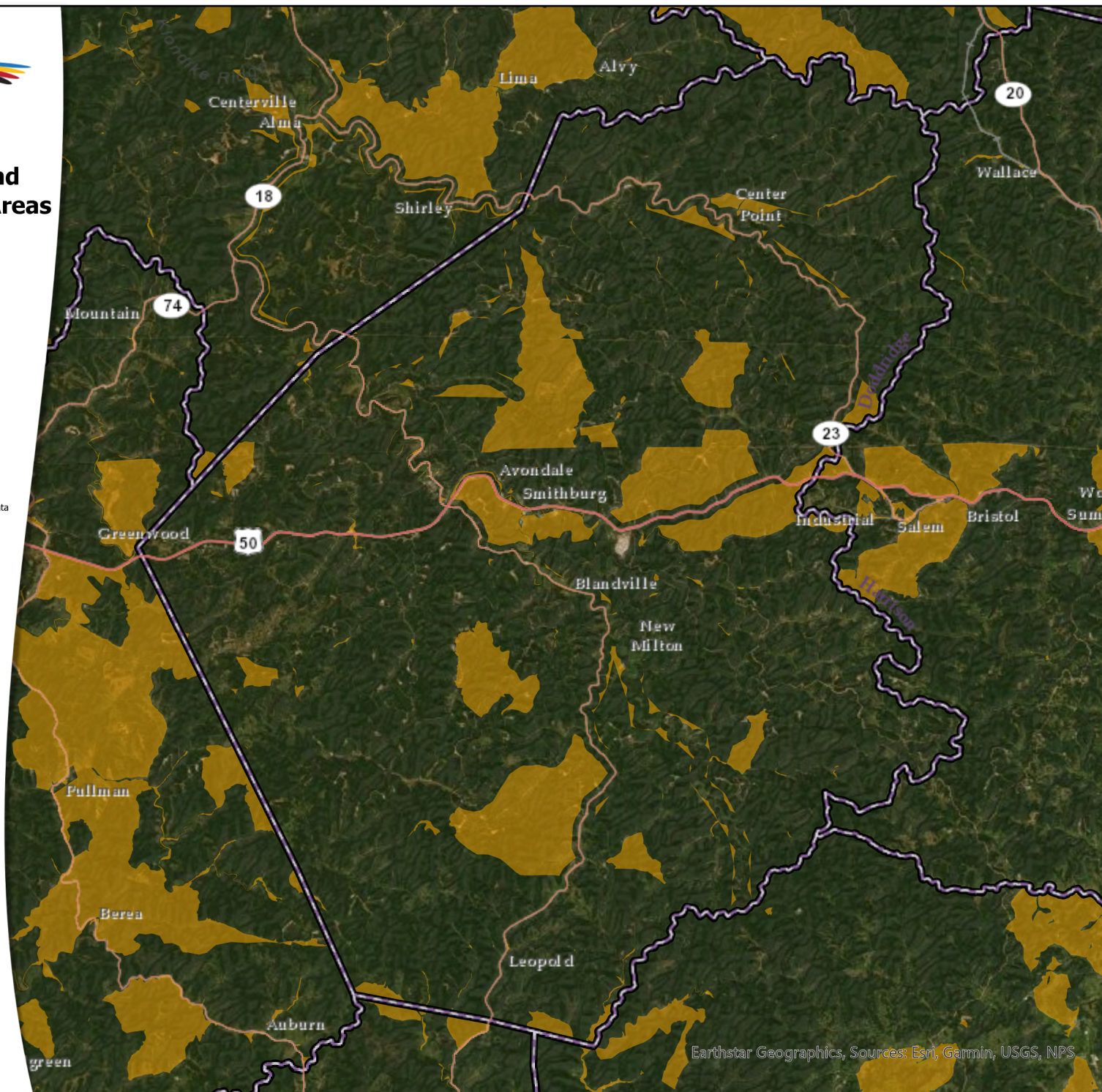
Represented by Census Blocks
Provided by Ookla speed tests
(January 2020 - March 2021)

 Unserved &
Unfunded

Census block boundaries are dissolved. "Unserved" refers to any area that does not receive 25/3 Mbps. Unserved census blocks were derived from aggregated median values of Ookla speed test data points and overlapping publicly funded areas were removed.



Projection: NAD 1983 UTM Zone 17N
Jamie Hoffmann, Jamie.H.Hoffmann@wv.gov
West Virginia Development Office
West Virginia Office of Broadband
West Virginia Broadband Enhancement Council
ESRI, Ookla, FCC Form 477, FCC A-CAM, ARC
USDA ReConnect, USDA Community Connect, CDBG



Earthstar Geographics, Sources: Esri, Garmin, USGS, NPS