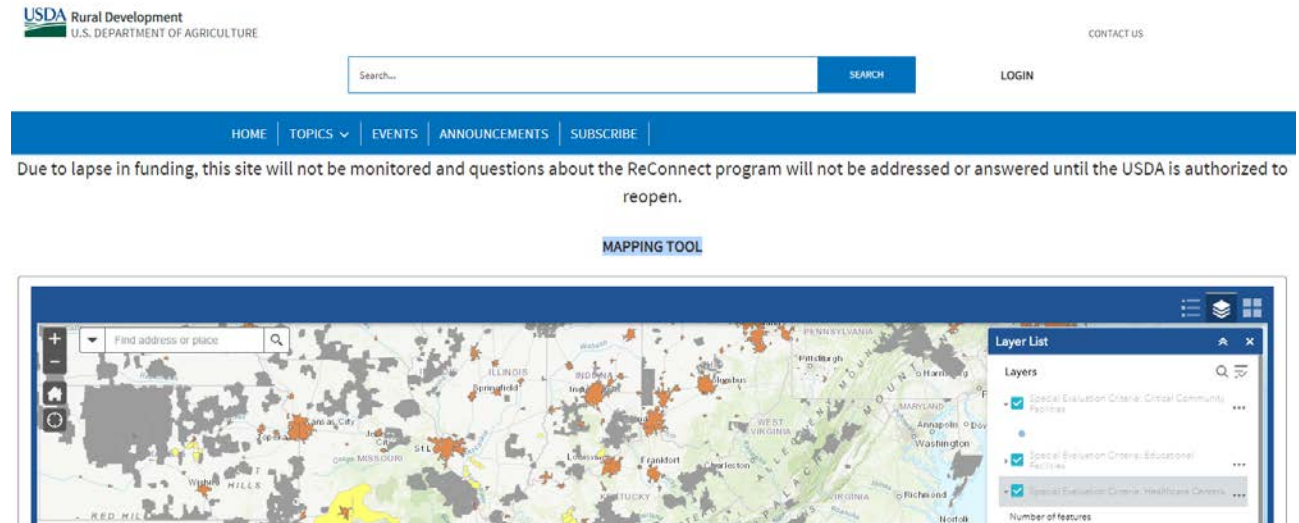


Online Mapping Resources

1. USDA MAPPING TOOL

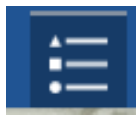
<https://reconnect.usda.gov/s/rd-rdae-mapping-tool>



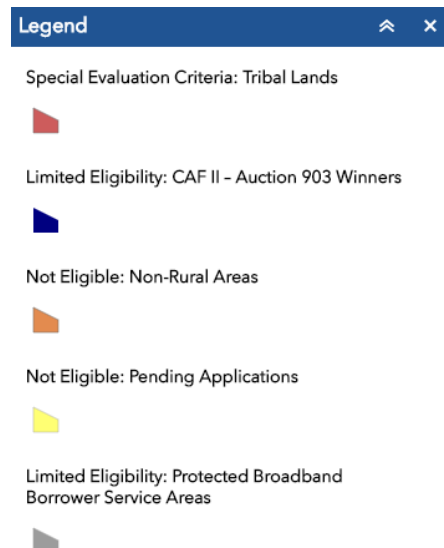
This interactive map provides applicants to visualize limited eligibility, non-eligible areas and special evaluation criteria facilities under the ReConnect Program



On the top right, locate three buttons.



The first button will open the legend.





Second button will open a layer list.

Layer List [Close]

Layers [Search] [Filter]

- Special Evaluation Criteria: Critical Community Facilities ...
- Special Evaluation Criteria: Educational Facilities ...
- Special Evaluation Criteria: Healthcare Centers ...
- Special Evaluation Criteria: Tribal Lands ...
- Limited Eligibility: CAF II - Auction 903 Winners ...
- Not Eligible: Non-Rural Areas ...
- Not Eligible: Pending Applications ...
- Limited Eligibility: Protected Broadband Borrower Service Areas ...

Here you can turn on or off individual layers. Some of the layers are scale-dependent and will become visible as you zoom in using the zoom in-out tool on the top left or using your mouse scroll button.

2. FCC CAF II Auction 903 Results Mapping Tool

<http://gis-fcc.opendata.arcgis.com/datasets/auction903-results-public/>

FC Federal Communications Commission

Find [Search] My Data [Profile] Tony [Dropdown]

Location density of 16,950 features

Overview | **Data** | API Explorer

auction903 results public [Favorite] [Download] [APIs]

Custom License 8/28/2018 Spatial Dataset 16,950 Rows

There is no description available.

Attributes

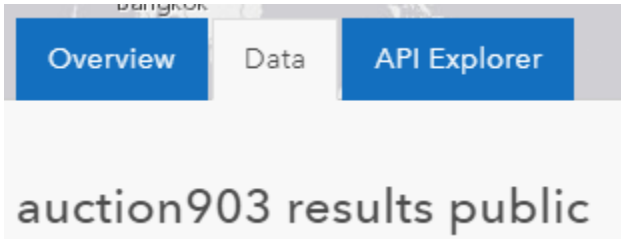
Chart | **Map Visualization**

bidder Text	cbg_id Text	latency Text	locations Number	SHAPE_Area Number	SHAPE_Length Number	stateabbr Text	tier Text	SHOW MORE 1 Attribute
----------------	----------------	-----------------	---------------------	----------------------	------------------------	-------------------	--------------	---------------------------------

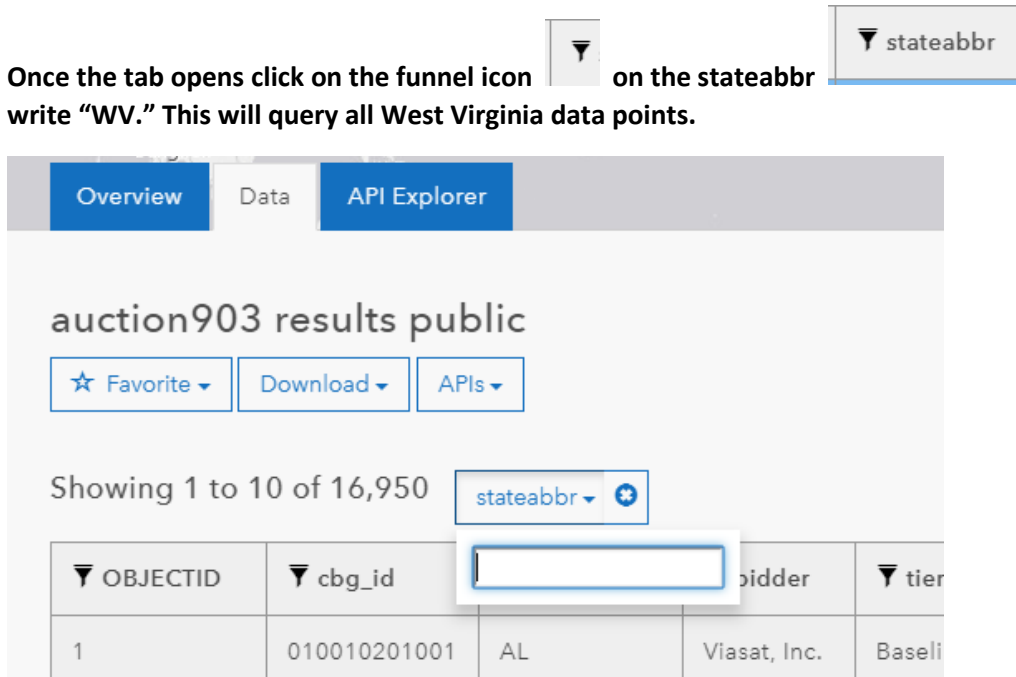
Related Data

About
Open Data
Shared By: GIS_PUBLIC_FCC
Data Source: services.arcgis.com
View Metadata
Create Webmap
Create a Story Map

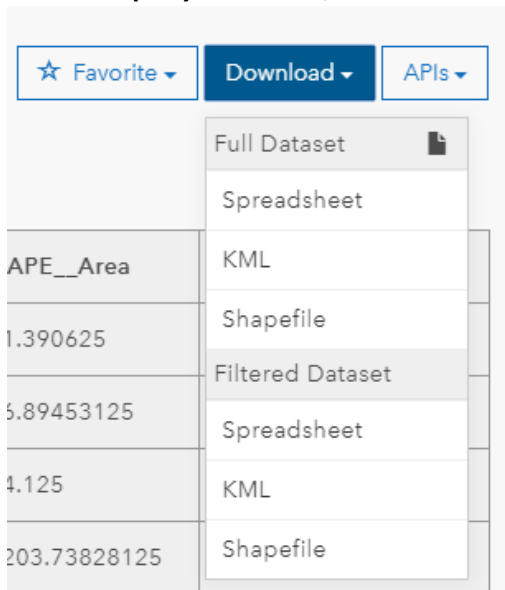
On this site you can download CAF II Auction 903 data in comma delimited (csv), Google Earth KML (kmz) and ESRI Shapefile (shp) formats by clicking on the tab marked "Data."



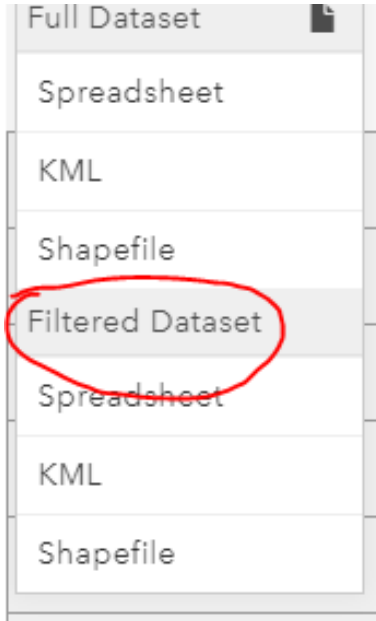
Once the tab opens click on the funnel icon on the stateabbr column and write "WV." This will query all West Virginia data points.



Once the query is finished, locate the download button and click on it.



Select the appropriate data format, either Tabular or GIS-Ready. Please note that you will select the format listed below “Filtered Dataset,” otherwise you will be downloading data for the whole country.



The file will automatically save to your download designated folder.

3. Other Broadband Mapping Resources

- a. **Council Speed Test and Survey Portal:** The West Virginia Broadband Enhancement Council collects speed data by location and other data points related to internet service through its Speed Test Portal.

Survey123 for ArcGIS • My Surveys Help Tony

Broadband Public/Private Autofill Overview Analyze Data

3/6/18 - 1/8/19 Filter Report (Beta) Export Open in Map Viewer Show individual response 2,079/2,079

How are you accessing the internet?	What type of public access are you using?	Other - What type of public access are you using?	I do not access the internet from home because service is:	Other - I do not access the internet from home because service is:	If access to reliable, high-speed internet becomes available in your area how likely would you be to subscribe for service?	Your Download Speed Test Result	Your Upload Speed Test Result	What is your internet service subscription level?	Do you want to receive the Council's monthly newsletter?	Comment?
Private Network						11,175	884	Low/Middle Range Speed - 4 to 13 Mbps	Yes	
Private Network						15,598	435	Middle/High Range Speed - 10 to 25 Mbps	Yes	Horrible broadband service made even worse with unacceptable upload speeds.

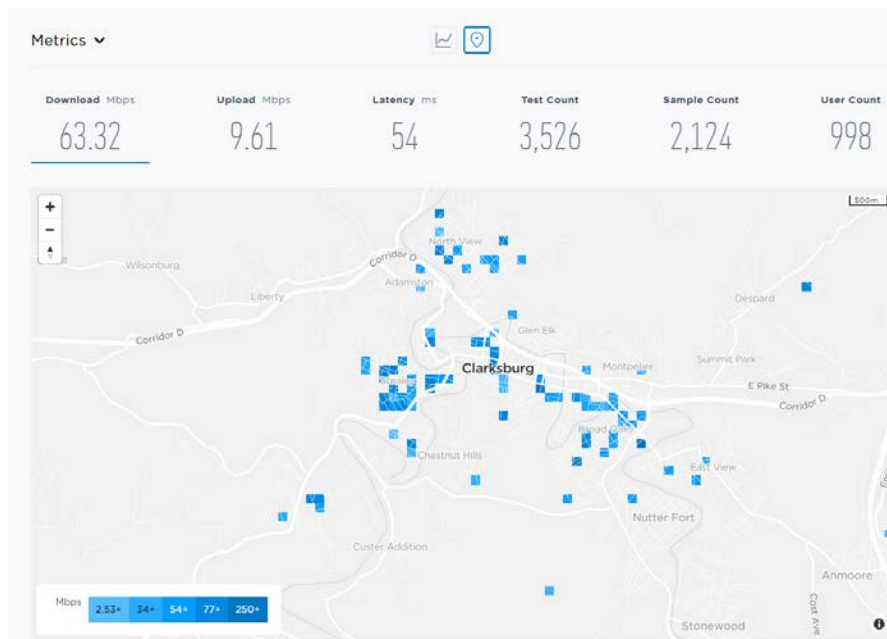
b. State Speed Test: This data includes speed tests taken on State managed servers regardless of individuals taking the survey or not.

Test Results ▾

Test ID	IP	Location	Date ▾	Server	Down	Up	Ping	Jitter	User Agent
f63d5f60...	184.13.*	Clarksburg, West Virginia, United States	Jun 25th 2018, 3:36 pm	Charleston, WV	4.96	0.70	65	278	Firefox
dab8f270...	184.15.*	Clarksburg, West Virginia, United States	Jun 10th 2018, 6:35 am	Charleston, WV	1.75	0.43	92	14	Chrome
d2755cb0...	184.14.*	Clarksburg, West Virginia, United States	Jun 6th 2018, 7:51 am	Charleston, WV	0.53	0.34	79	2	Chrome
e5aa4060...	184.14.*	Clarksburg, West Virginia, United States	Jun 3rd 2018, 7:12 am	Charleston, WV	0.51	0.32	78	4	Chrome
822c9e70...	50.110.*	Clarksburg, West Virginia, United States	May 20th 2018, 7:50 pm	Charleston, WV	5.90	0.78	365	2121	Mozilla

* Results displayed in local timezone 1 of 1 Page Size: 10 25 50

c. All West Virginia Ookla Speed Tests: This site captures speed tests taken on servers not managed by the State or the Council.

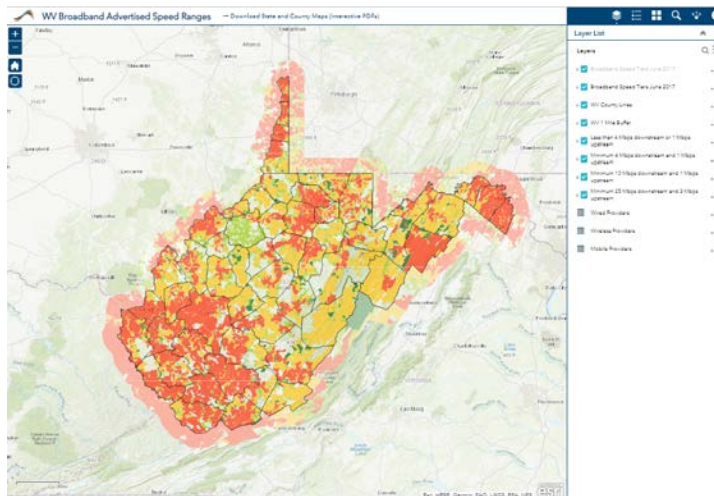


d. FiberLocator Subscription: The Council has access to fiber network data for most WV ISPs.



Upon request data listed above can be provided to applicants in various formats to help support their applications. The Council also has available an interactive map with FCC Form 477 data.

<https://wvbroadband.maps.arcgis.com/apps/webappviewer/index.html?id=a86ff4e0b9a046aca73c99a687c69b3c>



Additional Mapping Assistance: In addition to FCC Form 477 data, the Council is working with its partners to consolidate all available information on the existing map, as shown above.

For more information, contact:



Tony Simental, MS, GISP, State GIS Coordinator
West Virginia Office of GIS Coordination
1900 Kanawha Boulevard, East
Building 3, Suite 700 | Charleston, West Virginia 25305
Phone: 304-558-2234 | 304-957-2025
<http://www.gis.wv.gov>